

Appendix E. Chinese White Dolphin Monitoring Results

Figure 1: Sightings Distribution of Chinese White Dolphins

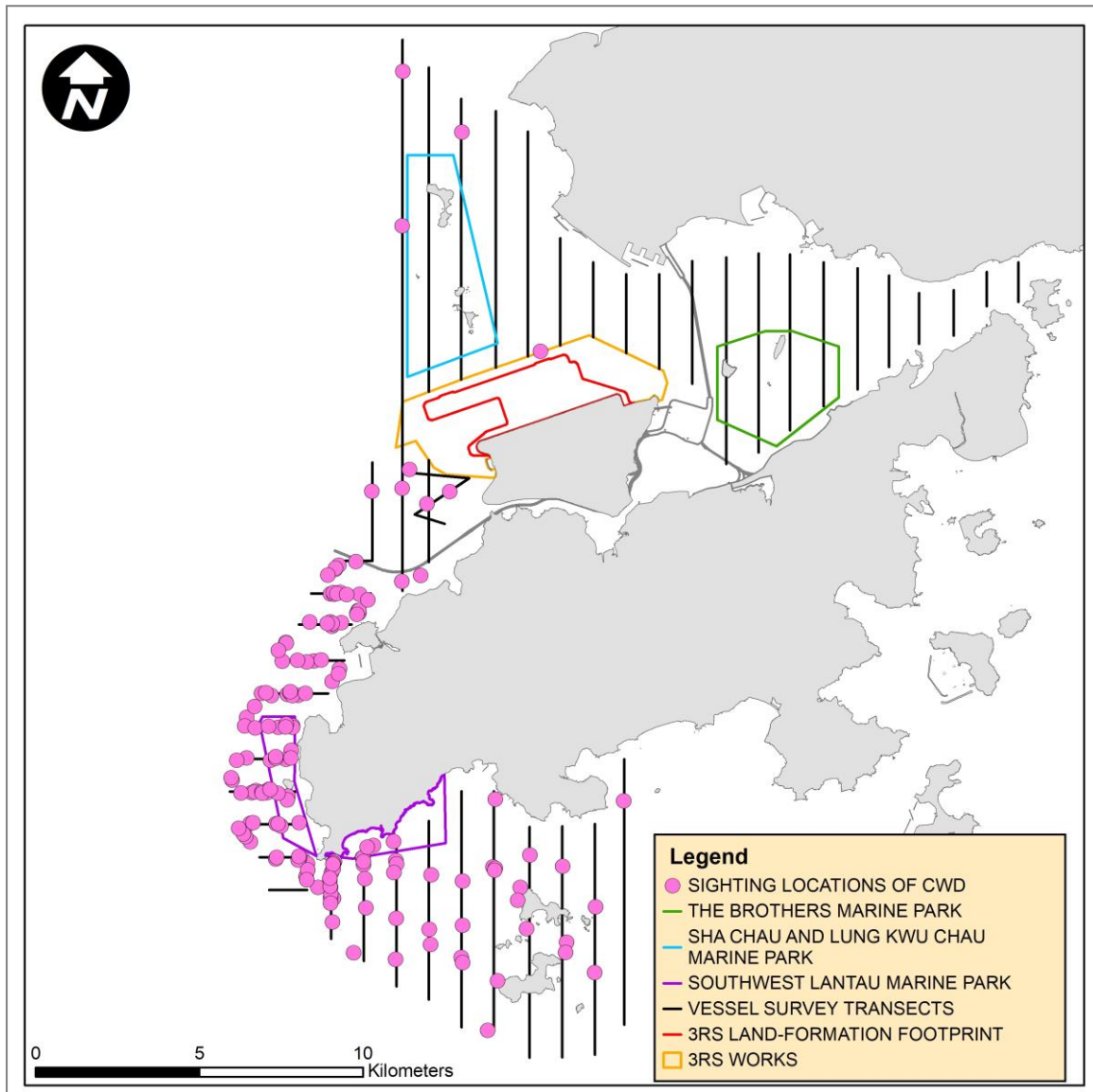
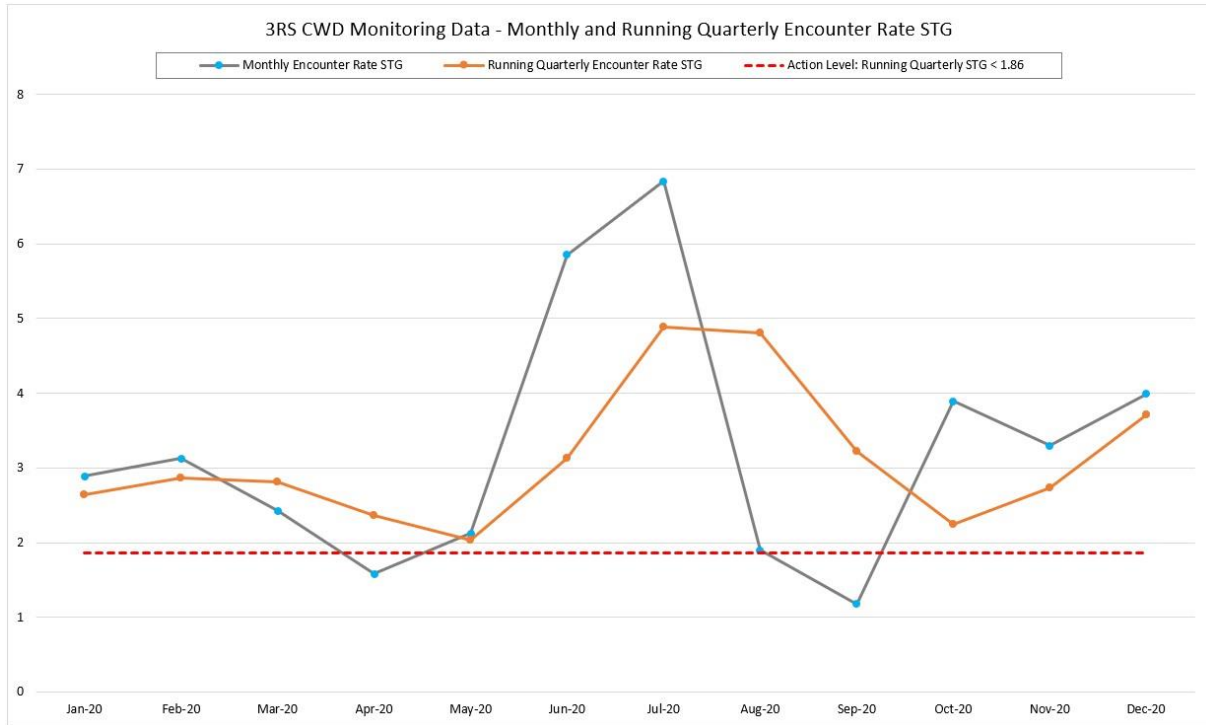


Figure 2: Graphical Presentation of Monthly and Running Quarterly Encounter Rates in the Reporting Period (January to December 2020)

(a) Encounter Rate STG



(b) Encounter Rate ANI

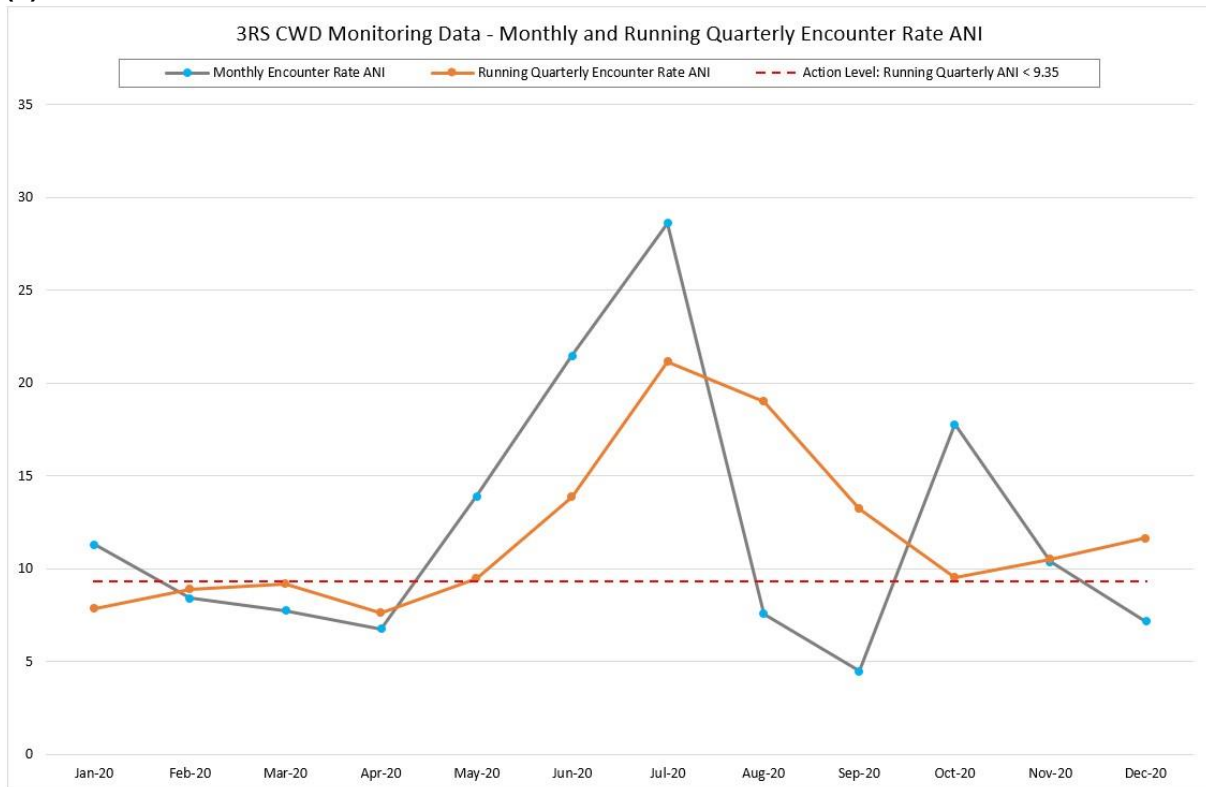
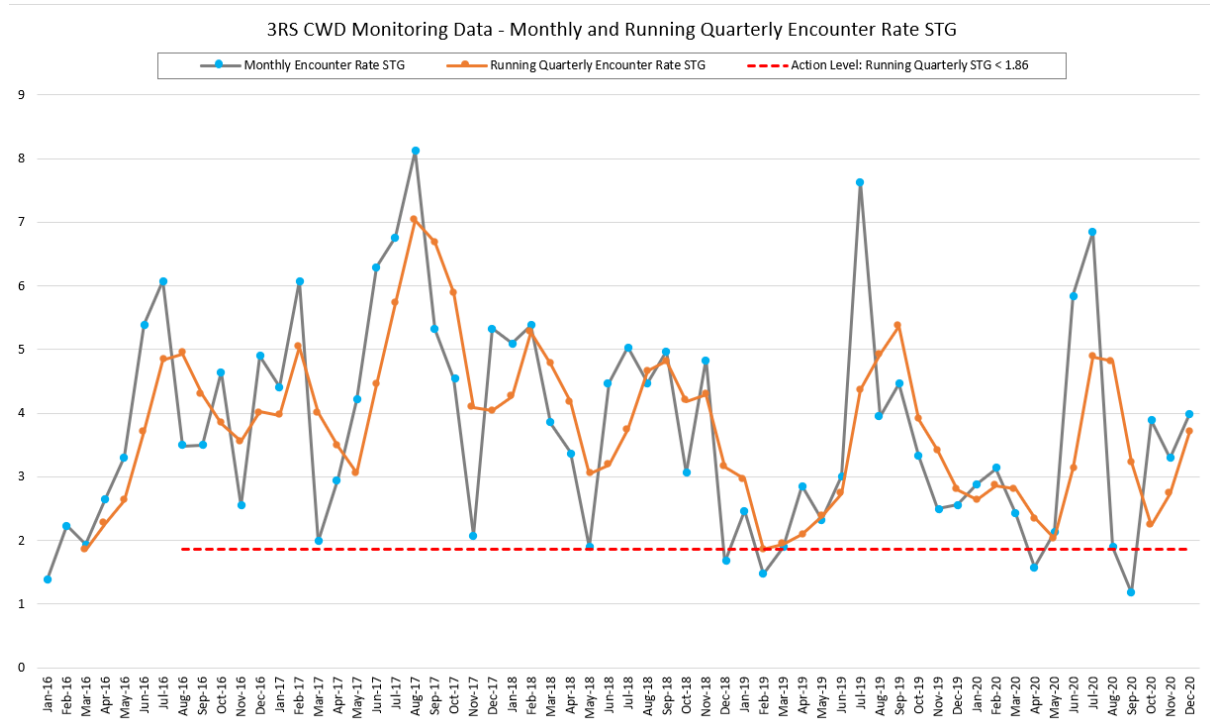


Figure 3: Graphical Presentation of Monthly and Running Quarterly Encounter Rates from January 2016 to December 2020

(a) Encounter Rate STG



(b) Encounter Rate ANI

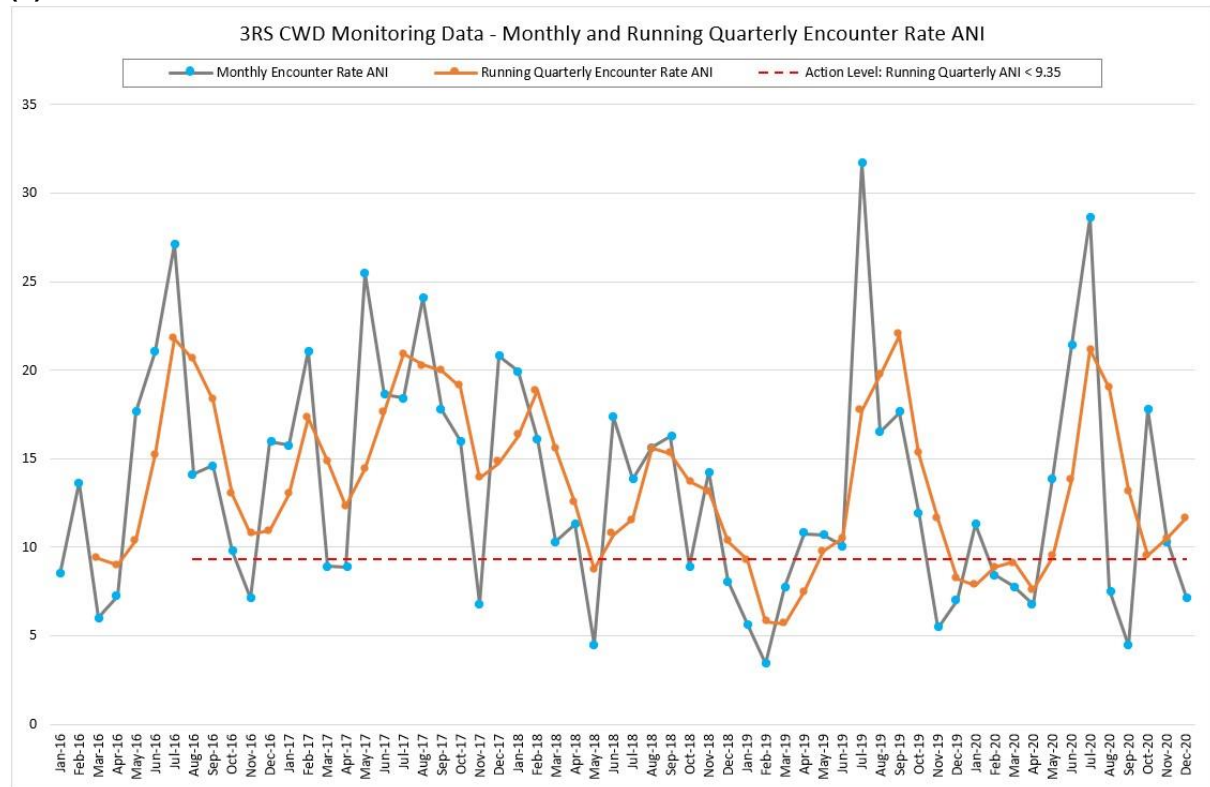
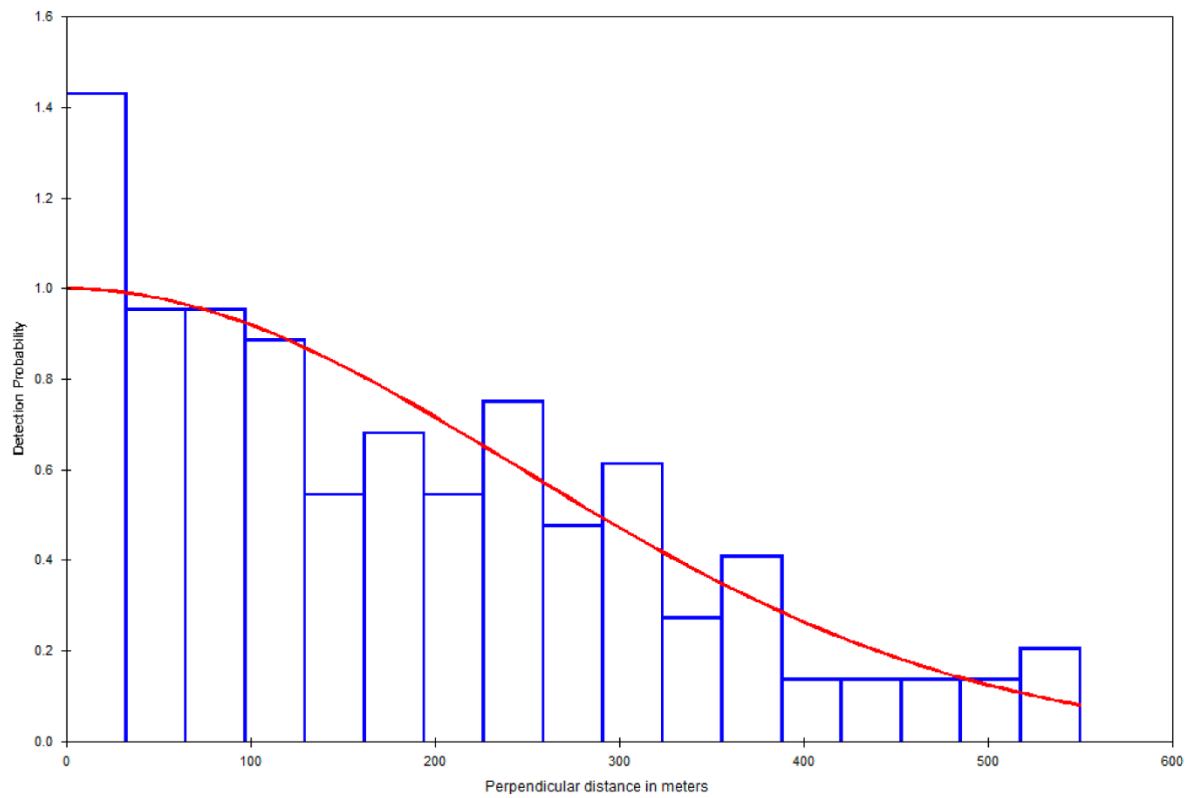


Figure 4: Fitted Detection Function of the 2020 CWD Sightings, Pooled from All Western Hong Kong Survey Areas (truncation distance = 600 m)



Note: Detection function used a Half-Normal model with a cosine adjustment.

Figure 5: Quantitative Grid Analysis – SPSE and DPSE of CWDs with Corrected Survey Effort per km² of Year 2019 and Year 2020

[SPSE = no. of on-effort dolphin sightings per 100 units of survey effort, DPSE = no. of dolphins per 100 units of survey effort]

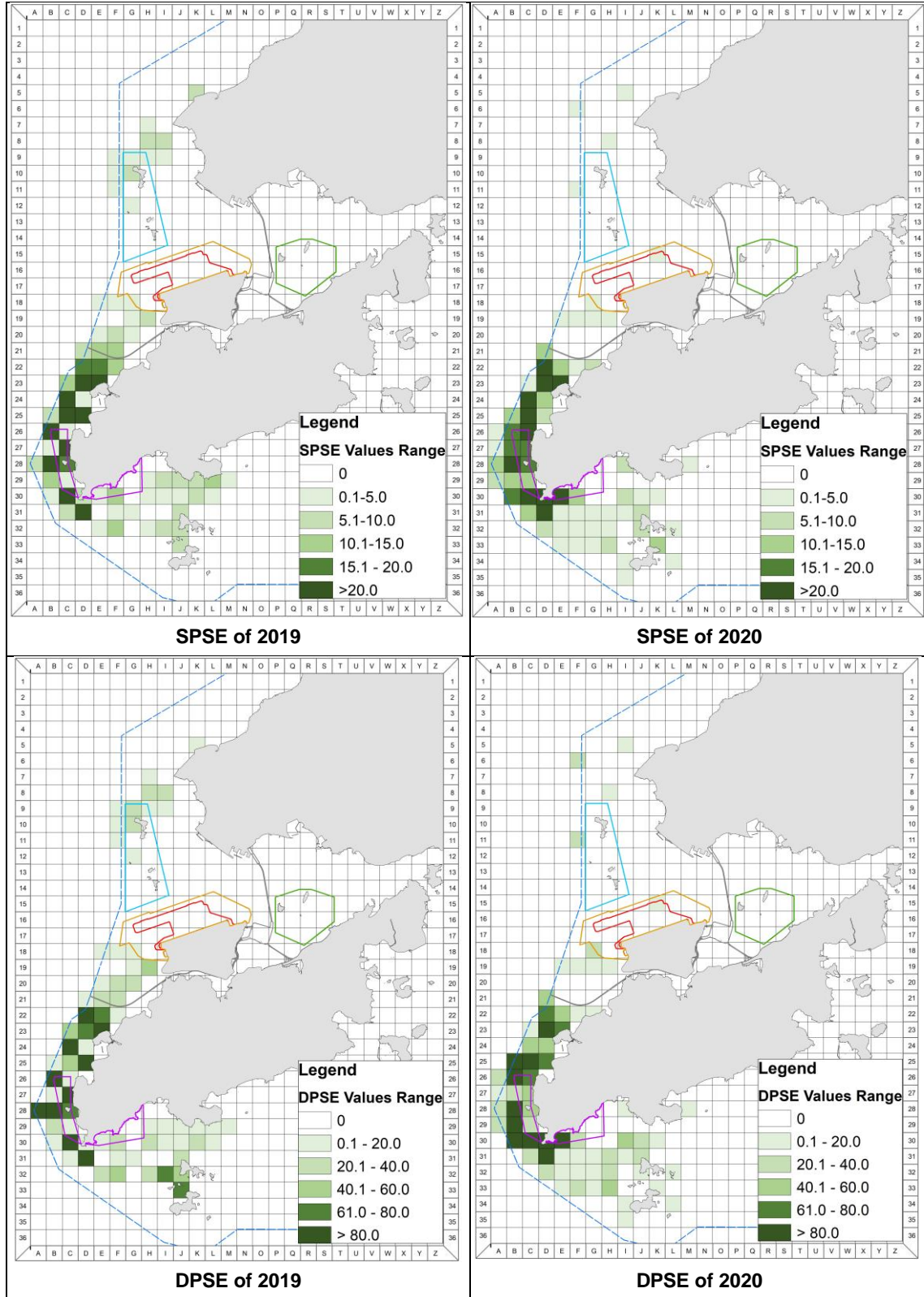
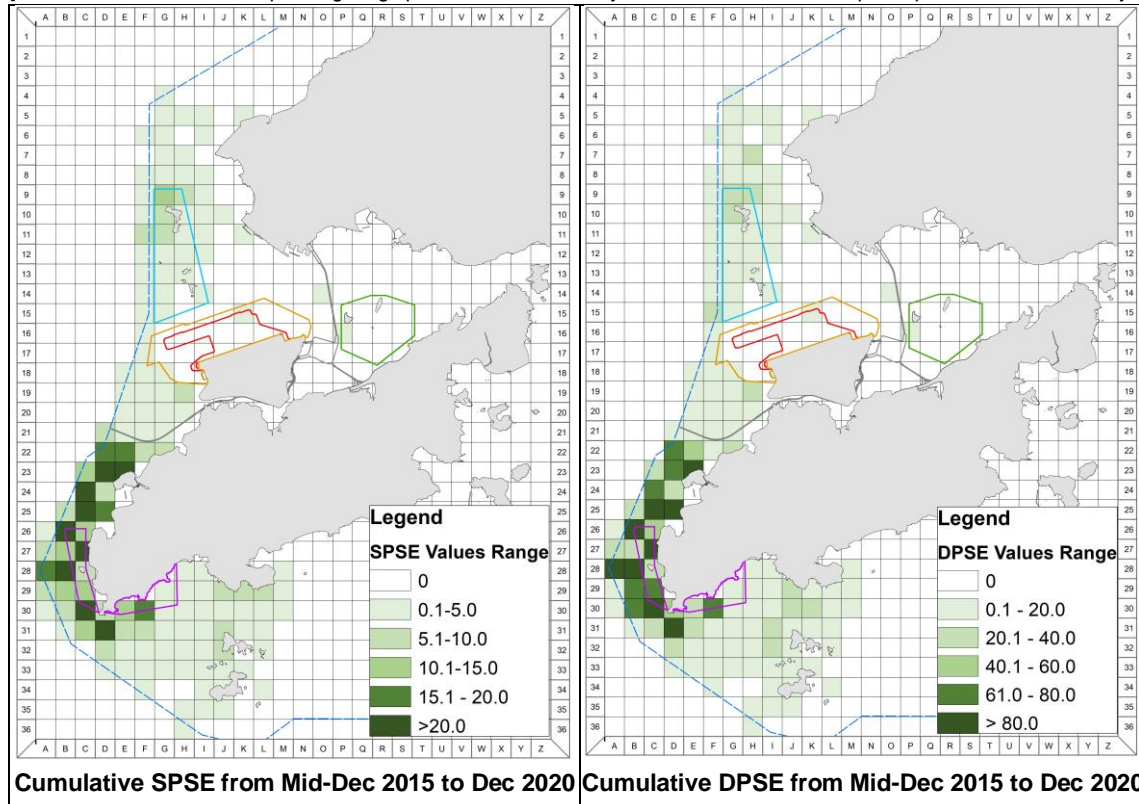


Figure 6: Cumulative SPSE and DPSE of CWDs with Corrected Survey Effort per km² from Dec 2015 to Dec 2020

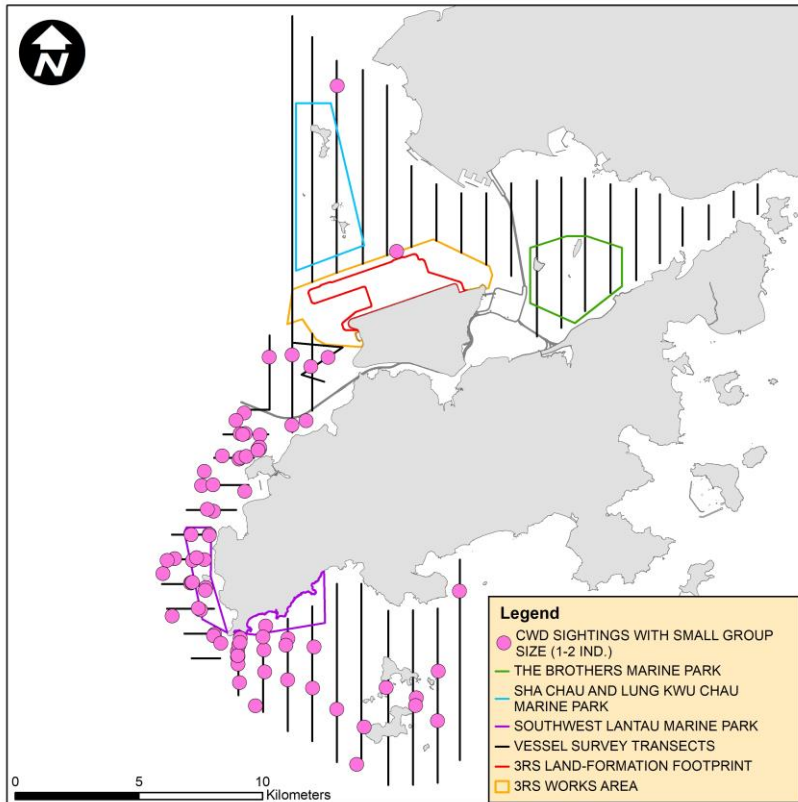
[SPSE = no. of on-effort dolphin sightings per 100 units of survey effort, DPSE = no. of dolphins per 100 units of survey effort]



Cumulative SPSE from Mid-Dec 2015 to Dec 2020

Cumulative DPSE from Mid-Dec 2015 to Dec 2020

Figure 7: Sightings Distribution of Chinese White Dolphins with Different Group Sizes
(a) Small Group Size (1 to 2 dolphins)



(b) Medium Group Size (3 to 9 dolphins) and Large Group Size (10 or more dolphins)

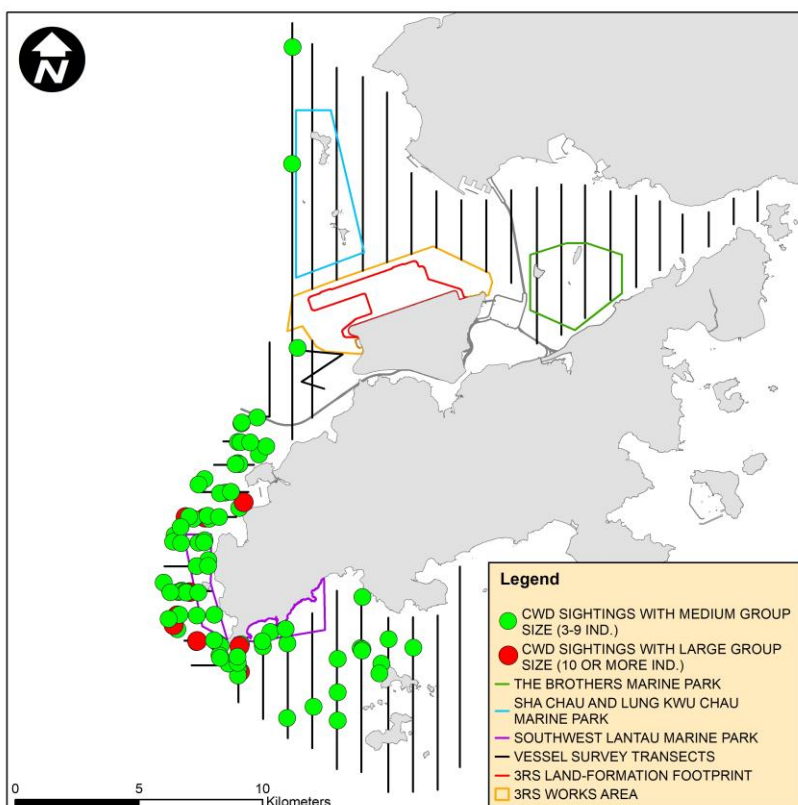


Figure 8: Sighting Locations of CWD Groups Engaged in Different Activities

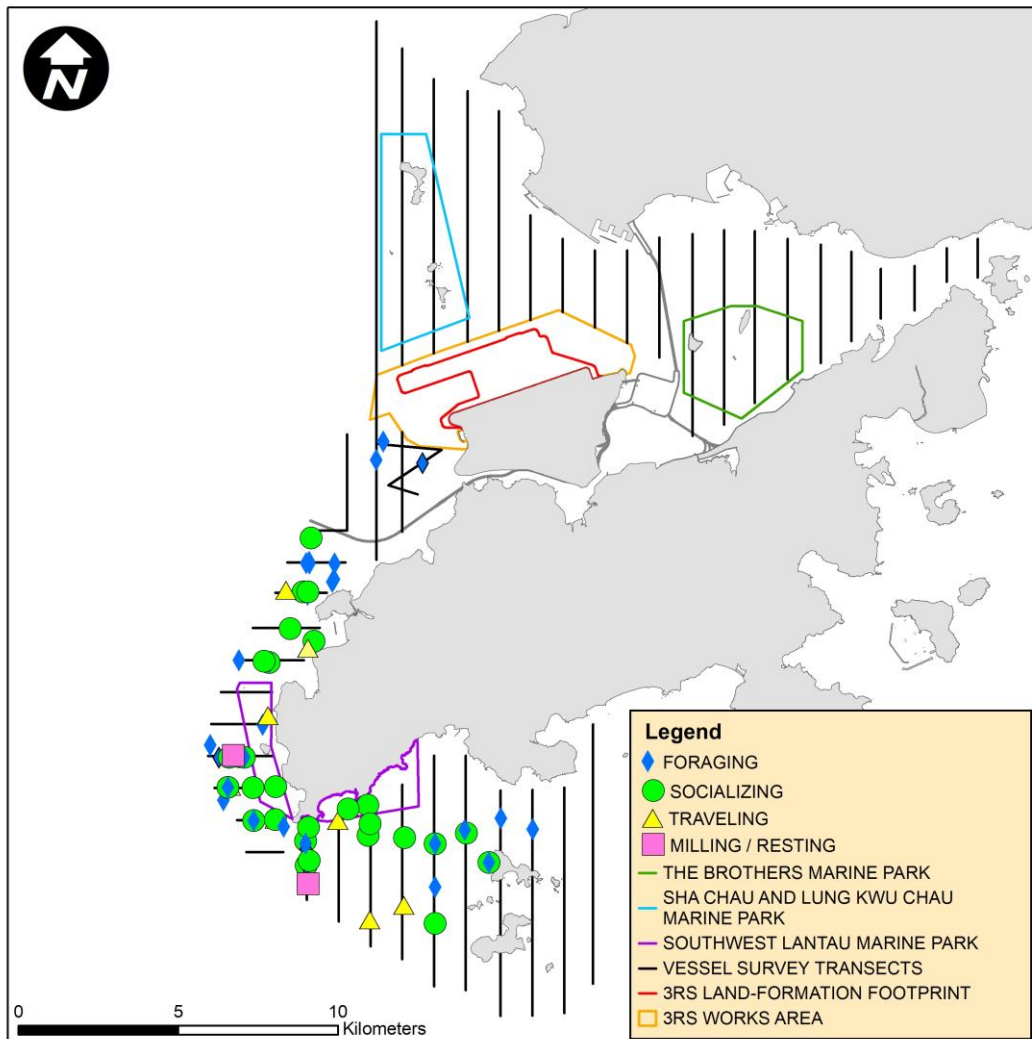


Figure 9: Sighting Locations of CWD Groups in Association with Fishing Boat

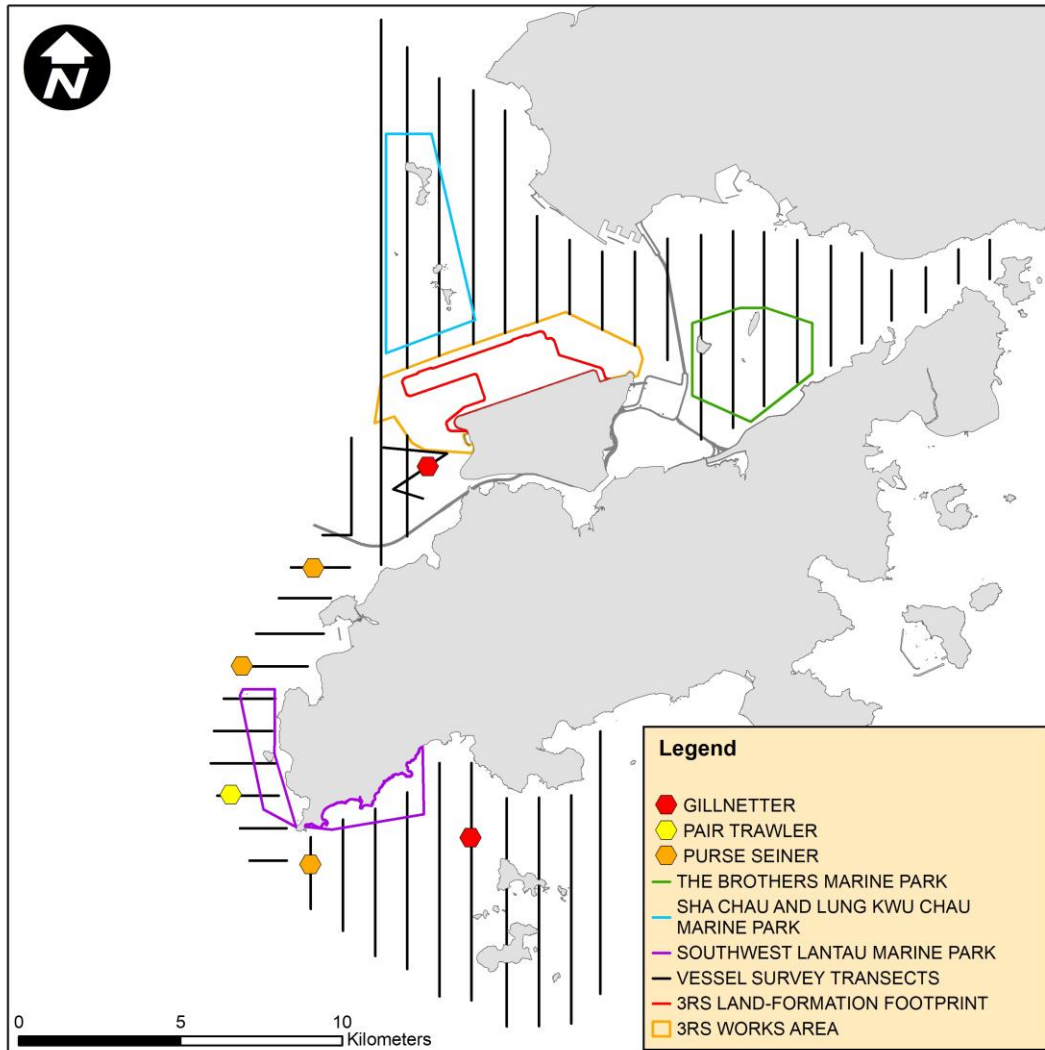


Figure 10: Sighting Locations of Mother-Calf Pairs

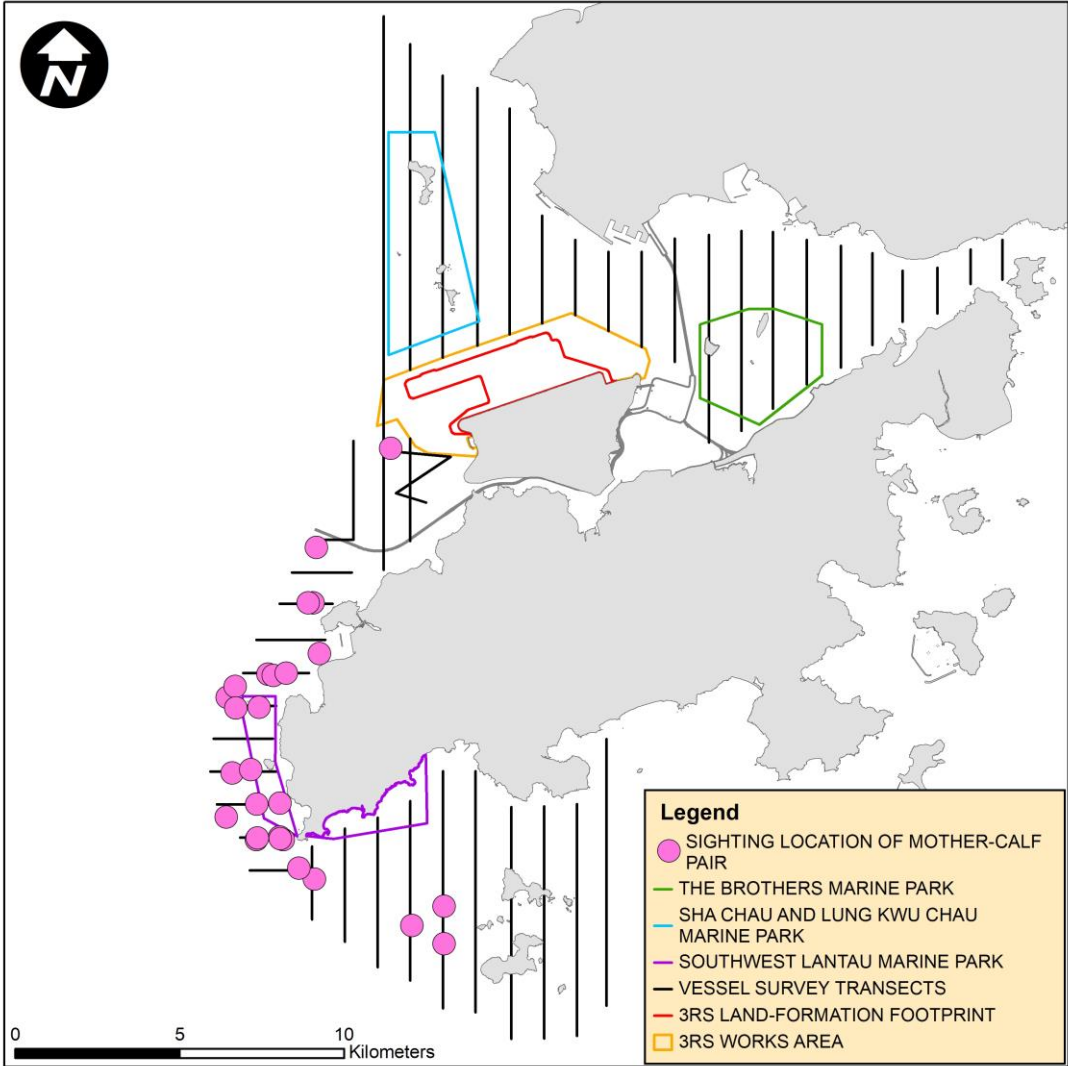
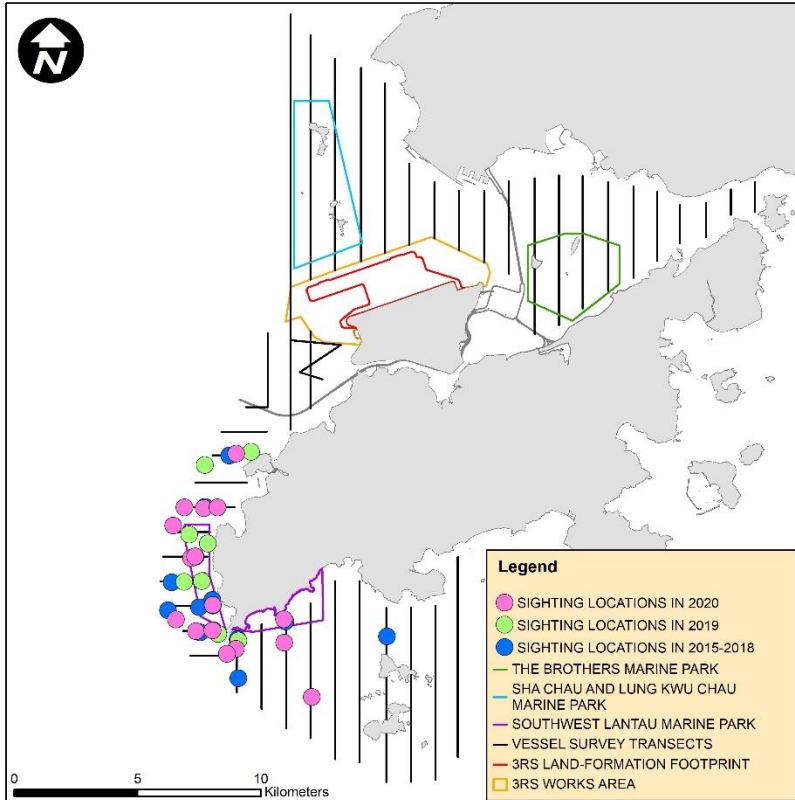
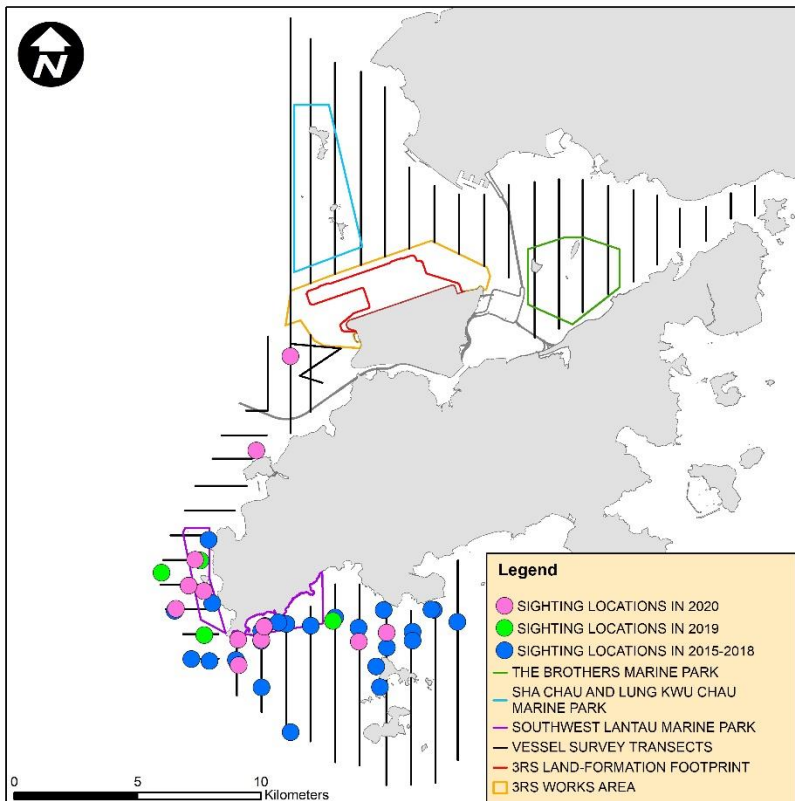


Figure 11 (batch): Photo Identification – Re-sighting Locations

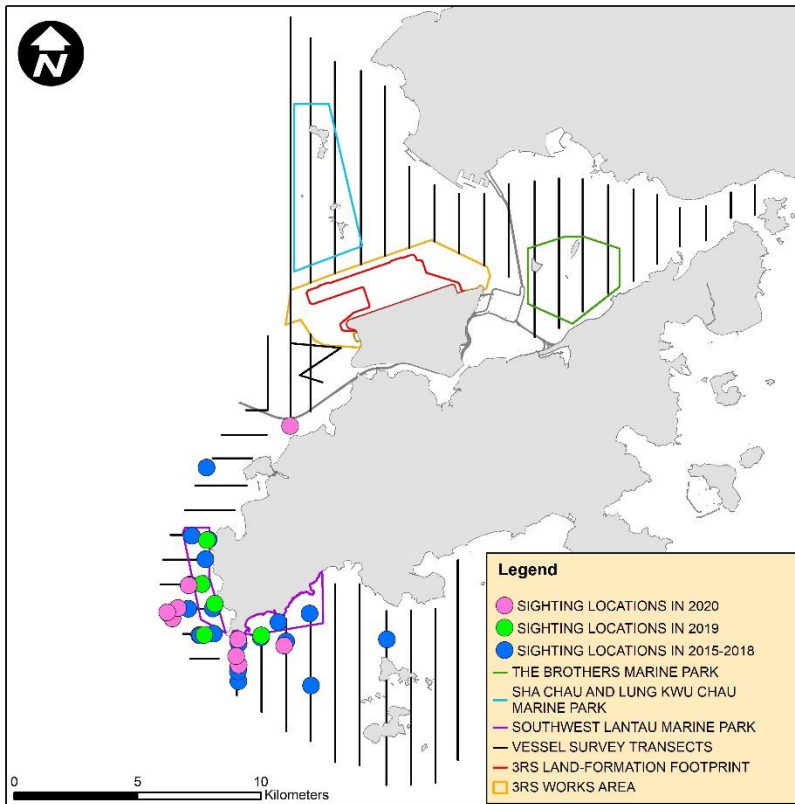
SLMM003 – the most frequently re-sighted animal in 2020 (the second most frequently re-sighted since 2015)



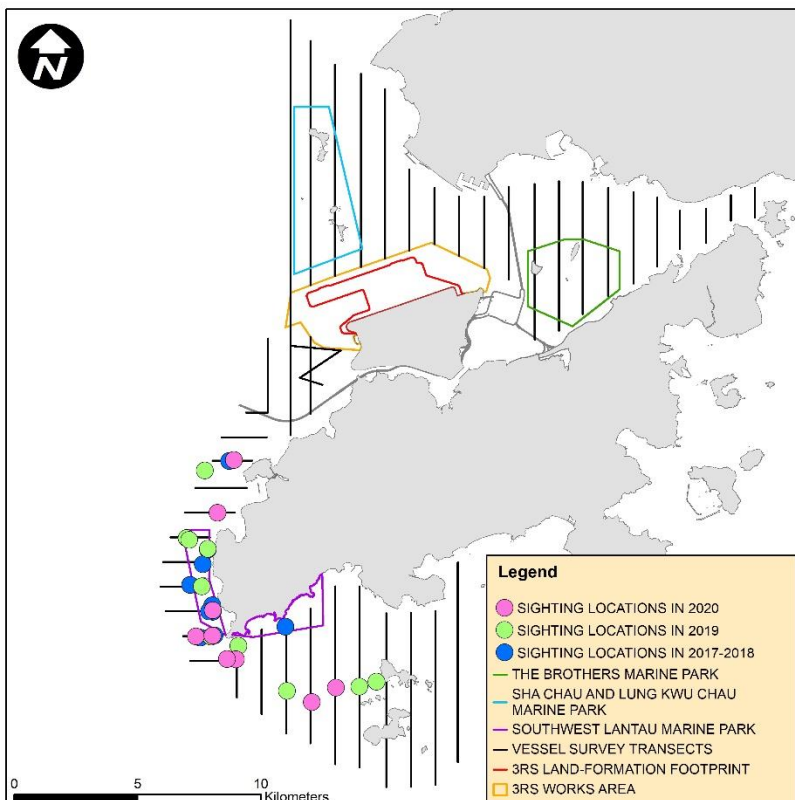
SLMM014 – the most frequently re-sighted animal since 2015



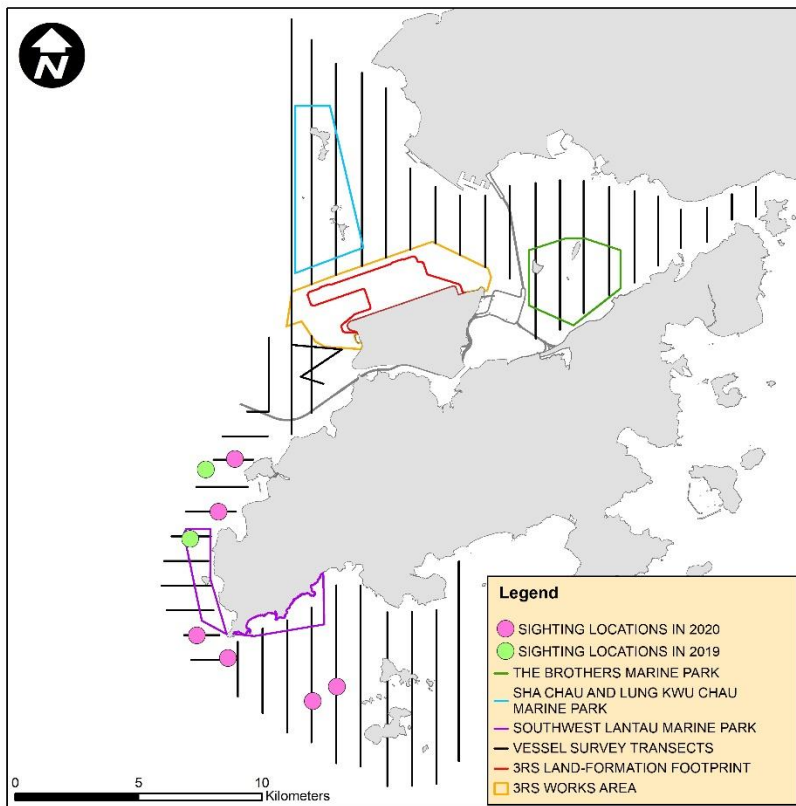
SLMM010 – the third most frequently re-sighted animal since 2015



WLMM079 – the mother of the most frequently re-sighted mother-calf pair in 2020



WLMM147 – the calf of WLMM079 (the most frequently re-sighted mother-calf pair in 2020)



SLMM028 – the dolphin with well recovery from serious injury

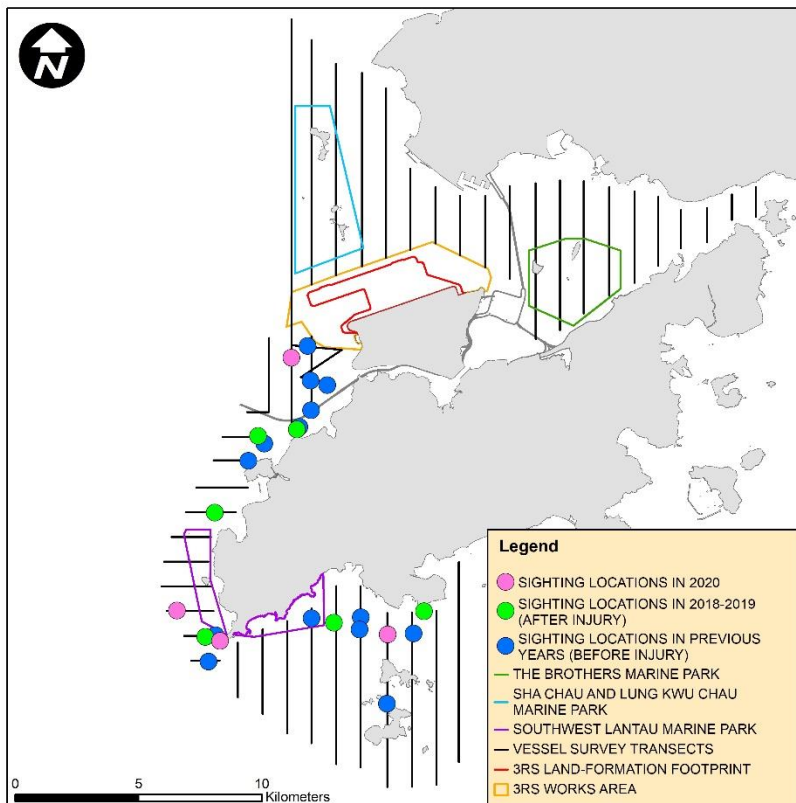


Figure 12: Plots of First Sightings of All CWD Groups (prior to filtering out short-track data) Obtained from Land-based Station at Lung Kwu Chau in 2020

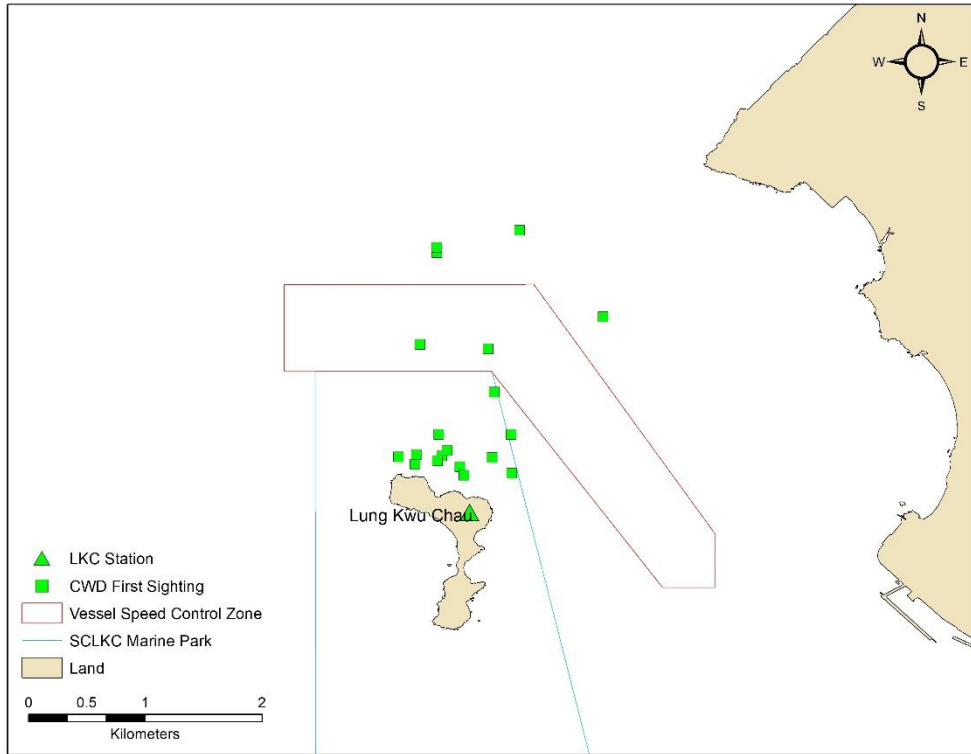


Figure 13: Proportion of CWD Total Track Time, per Total Effort Time, from Lung Kwu Chau (prior to filtering short-track data) Based on Time of Day in 2020

[The x-axis represents the hour block during which theodolite tracking surveys were conducted. The "n" in parentheses represents the number of days that survey effort was carried out during the associated hour block.]

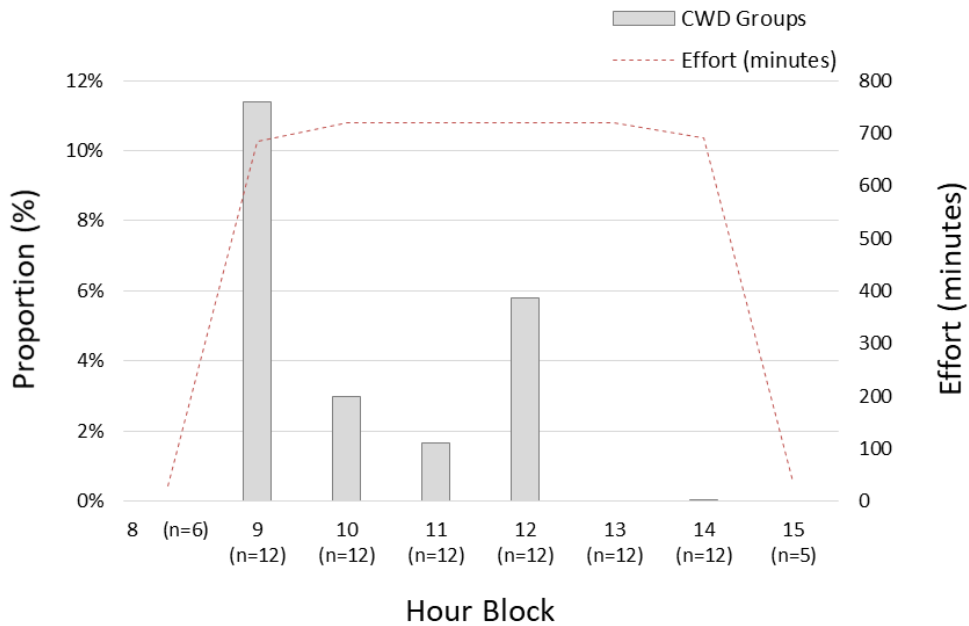


Figure 14: Total Number of CWD Groups Sighted and Tracked from Lung Kwu Chau Based on Month of the Year in 2020

[The grey bars represent the percentage of number of groups tracked per month, while the numbers above the bars indicate the total number of CWD groups tracked per study period (prior to filtering data). The orange line represents the percentage of total time spent tracking dolphins per month.]

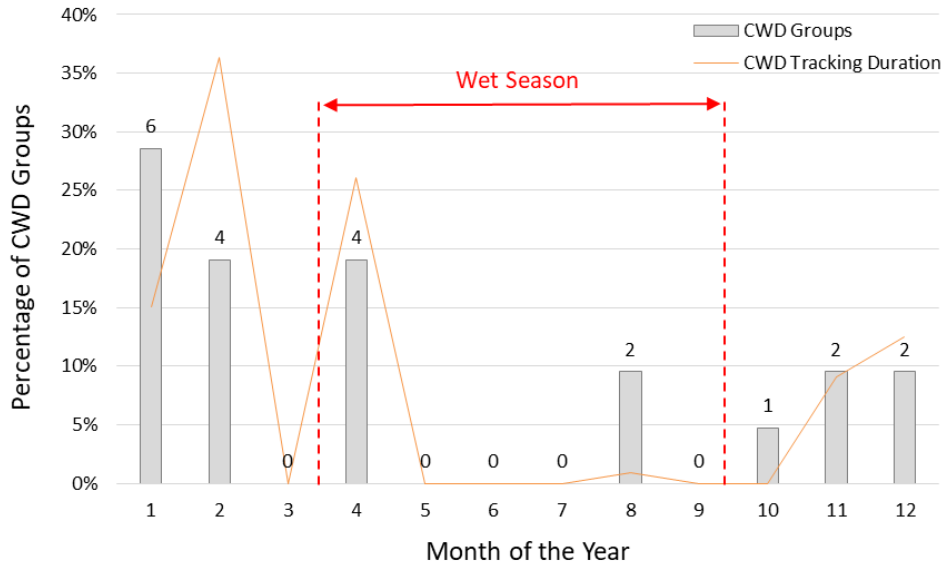


Figure 15: Plots of CWD Positions (Prior to Filtering Data) relative to Group Size tracked within Sha Chau and Lung Kwu Chau Marine Park in 2020

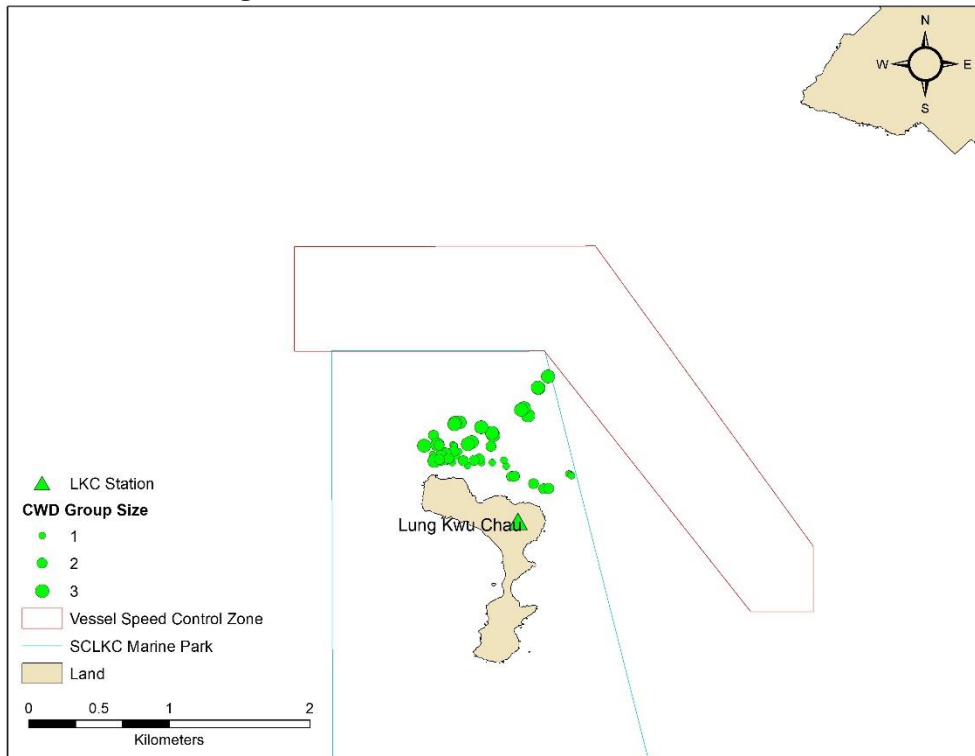


Figure 16: Plots of CWD Positions (Prior to Filtering Data) relative to Group Size crossing the boundary of Sha Chau and Lung Kwu Chau Marine Park in 2020

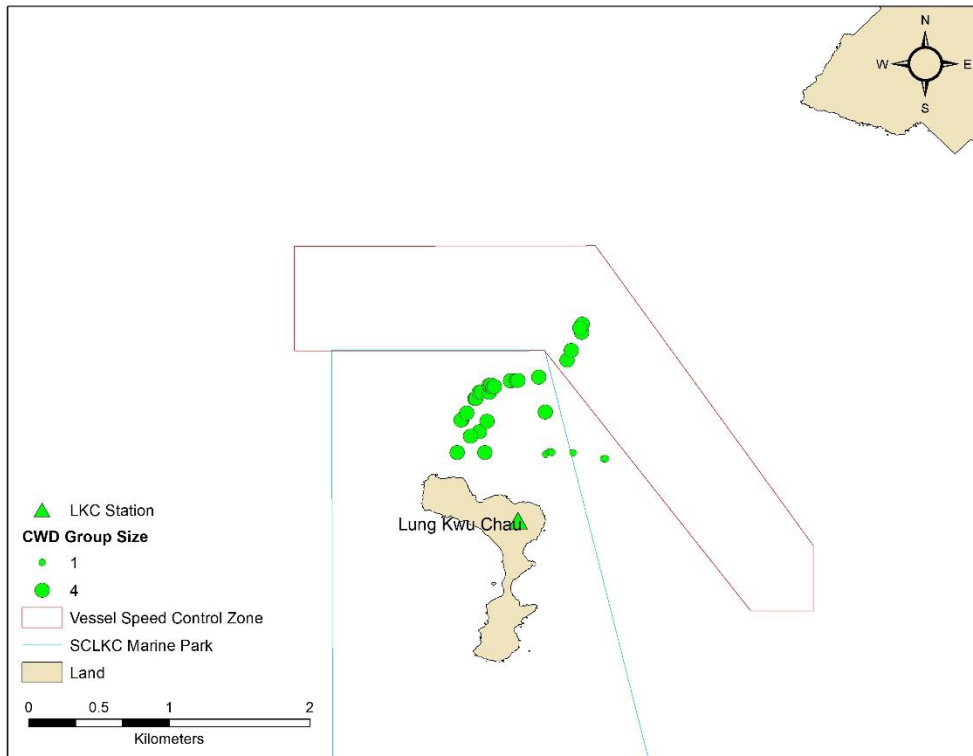


Figure 17: Plots of CWD Positions (Prior to Filtering Data) relative to Group Size tracked outside Sha Chau and Lung Kwu Chau Marine Park in 2020

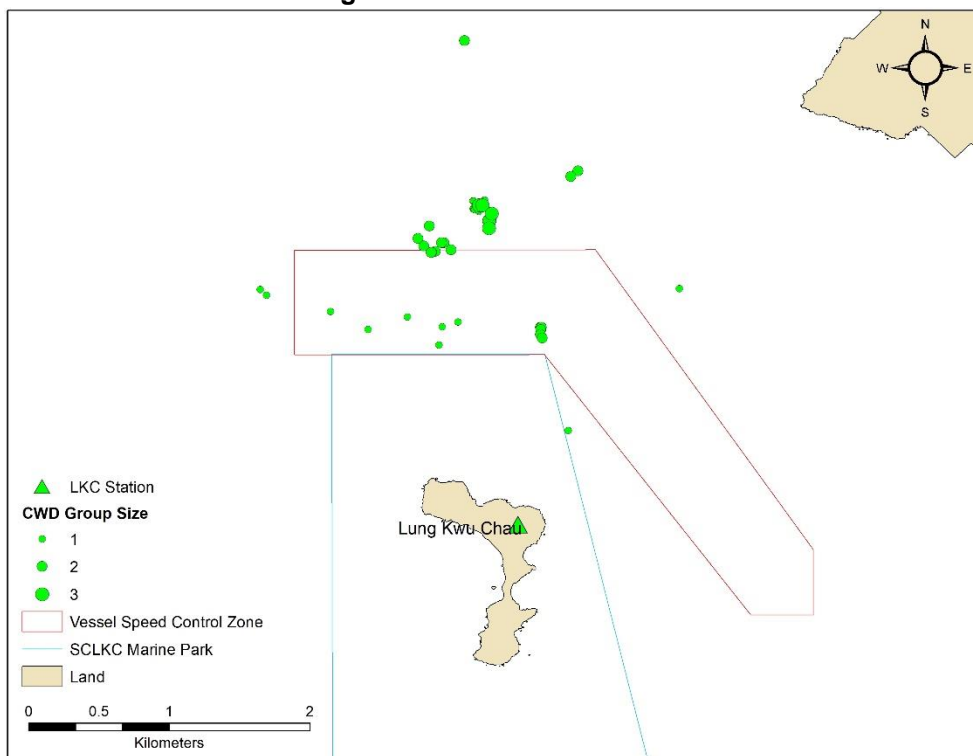


Figure 18: Percentages of CWD Behavioural States, excluding Unknown Category, recorded from Lung Kwu Chau in 2020

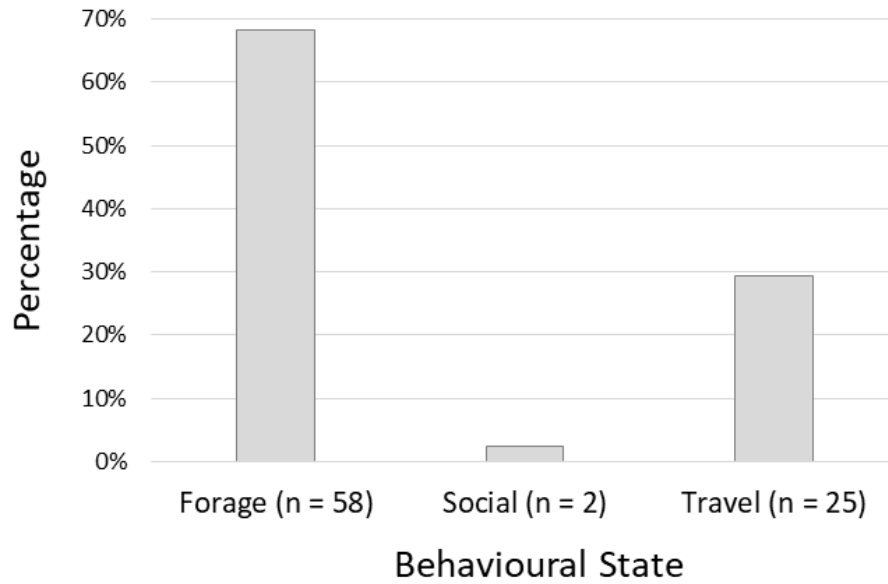


Figure 19: Stacked Bar Graph showing percentages of CWD Behavioural States, excluding Unknown Category, relative to the Sha Chau and Lung Kwu Chau Marine Park Location, recorded from Lung Kwu Chau in 2020

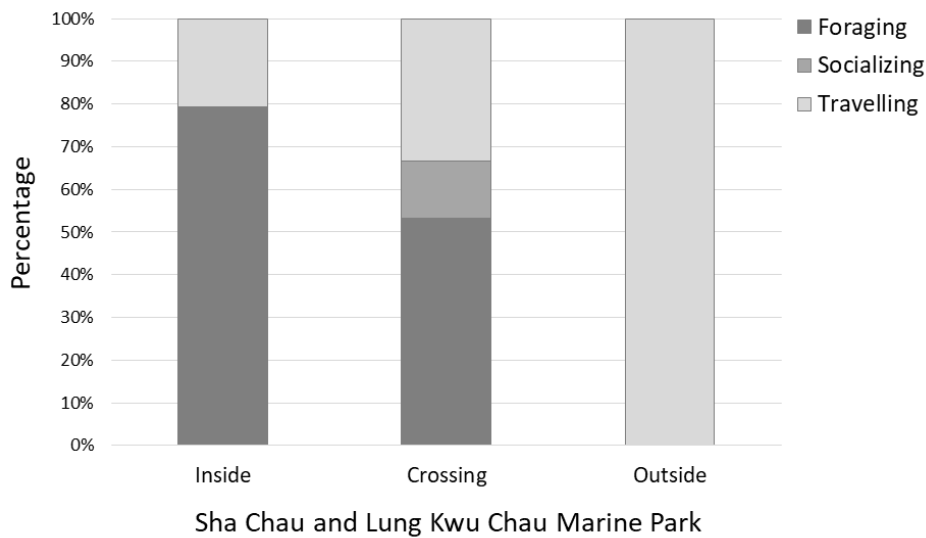


Figure 20: Plots of All Vessel Positions and All CWD Positions obtained from Lung Kwu Chau in 2020

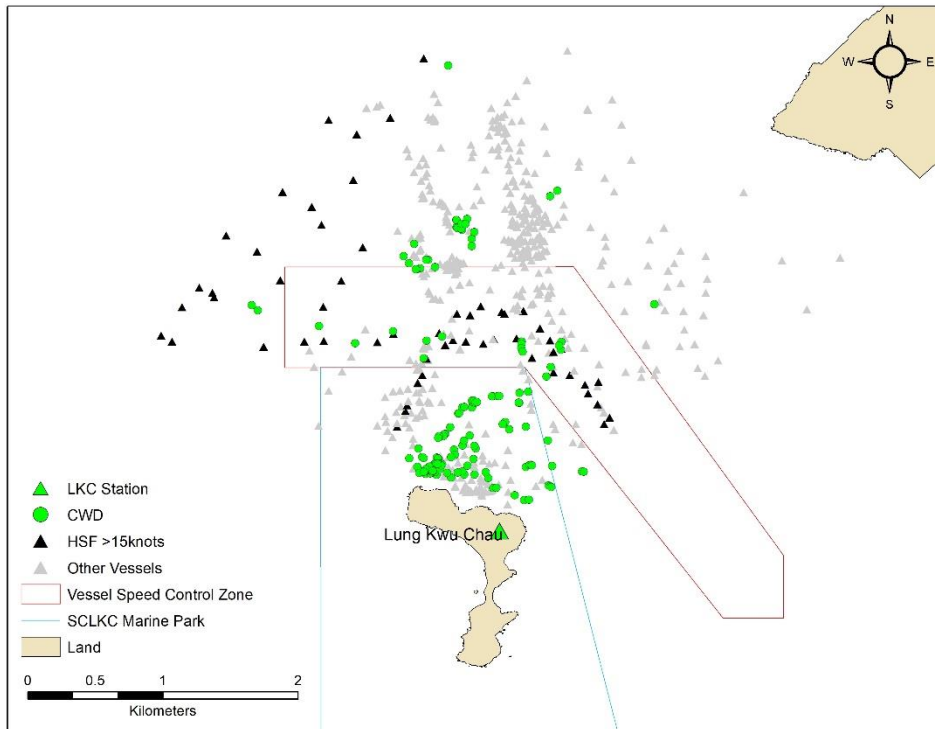
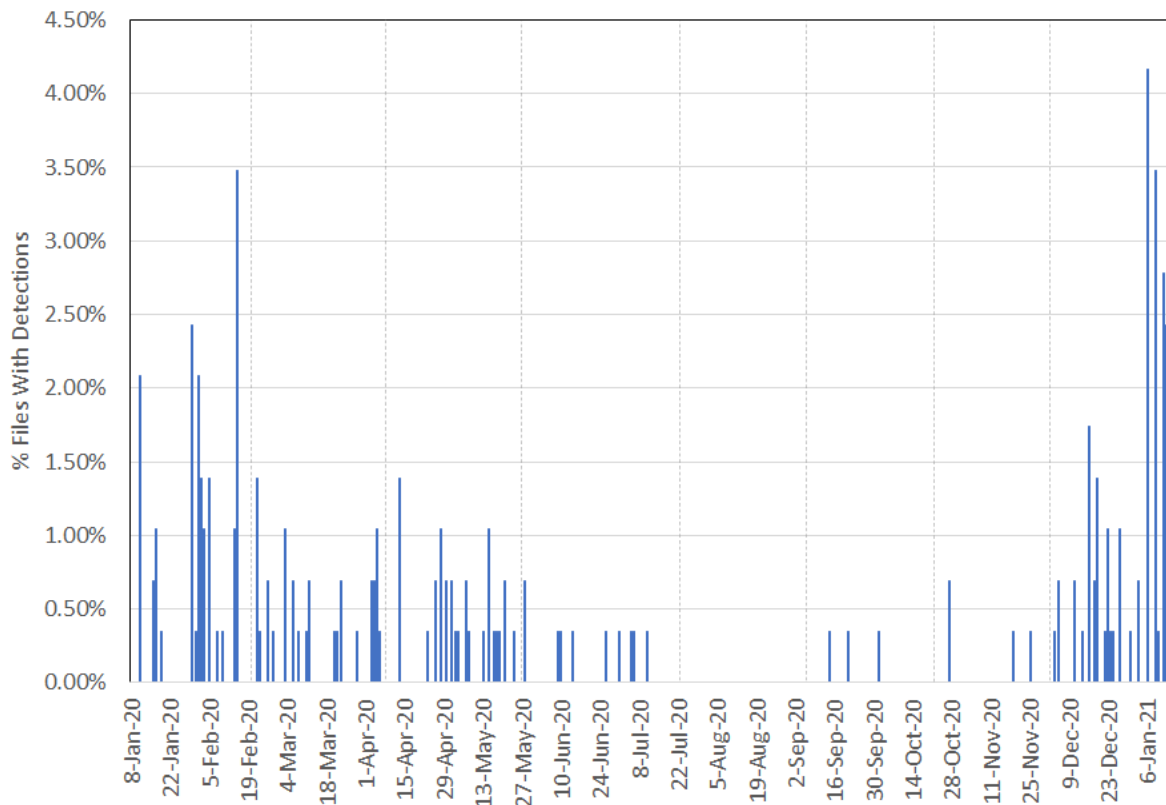


Figure 21: Dolphin Detections as Percentage of Files per day in 2020



[Grey dotted lines indicate retrieval/redeployment of EAR]

Figure 22: Dolphin Detections by Hour of Day in 2020

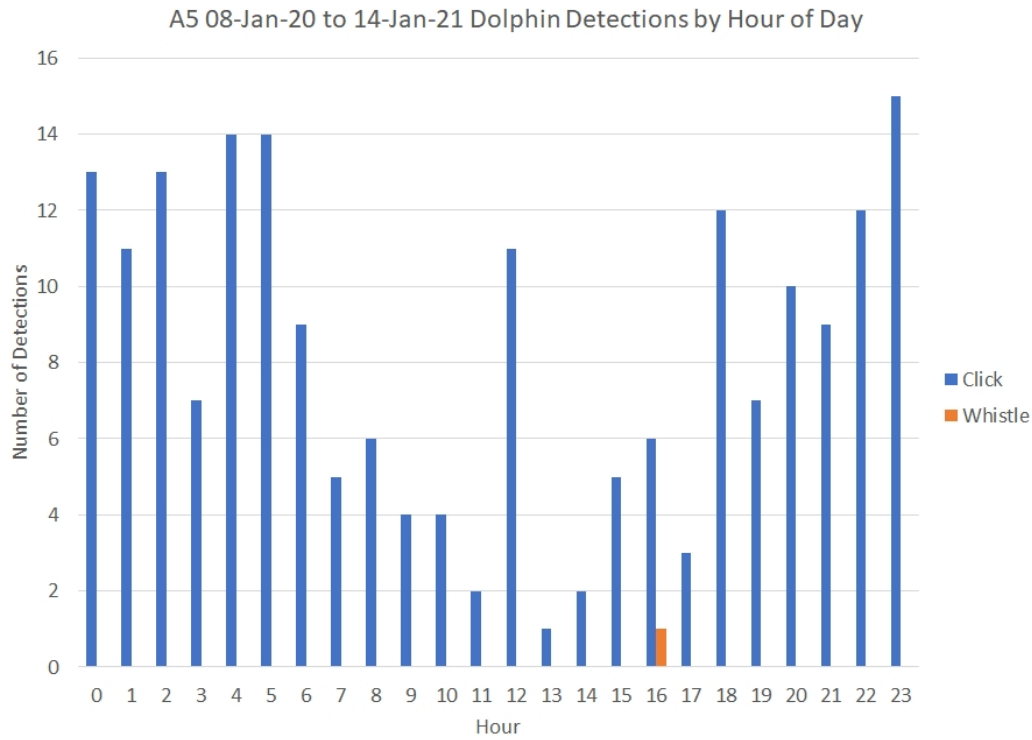
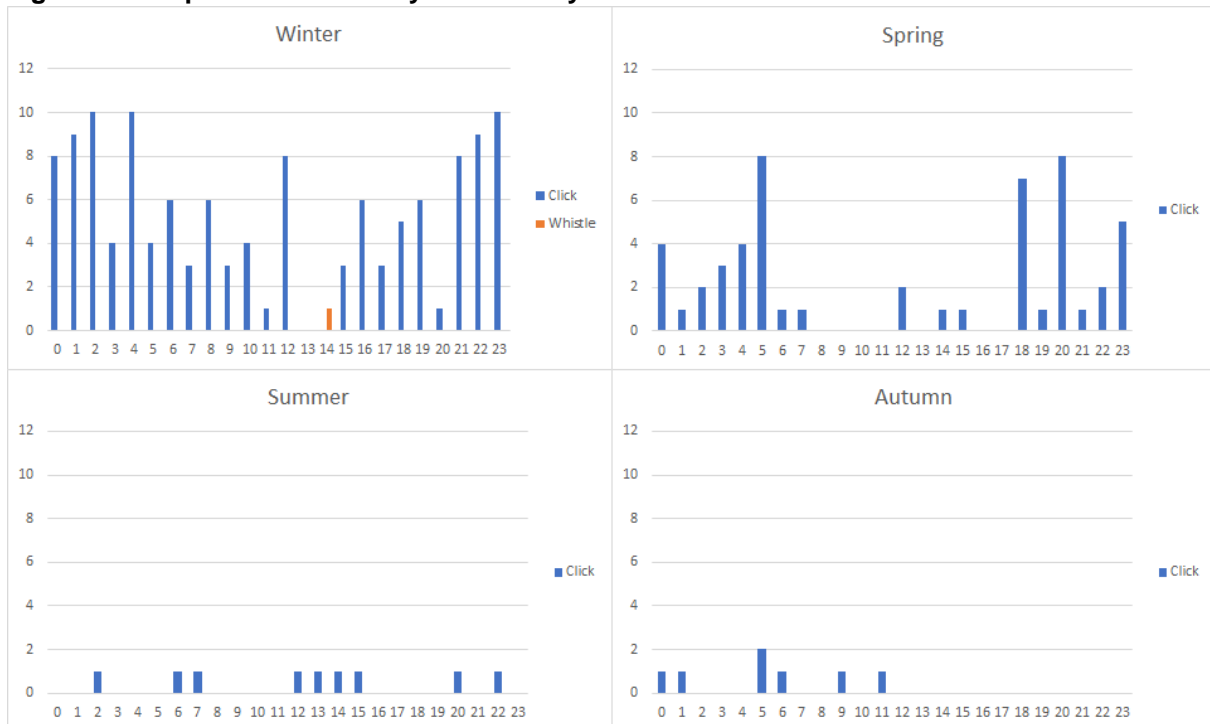


Figure 23: Dolphin Detections by Hour of Day and Solar Season in 2020



[Winter = Dec-Jan-Feb, Spring = Mar-Apr-May, Summer = Jun-Jul-Aug, Autumn = Sep-Oct-Nov]

Figure 24: Daily Mean Sound Pressure Level (SPL) in 2020

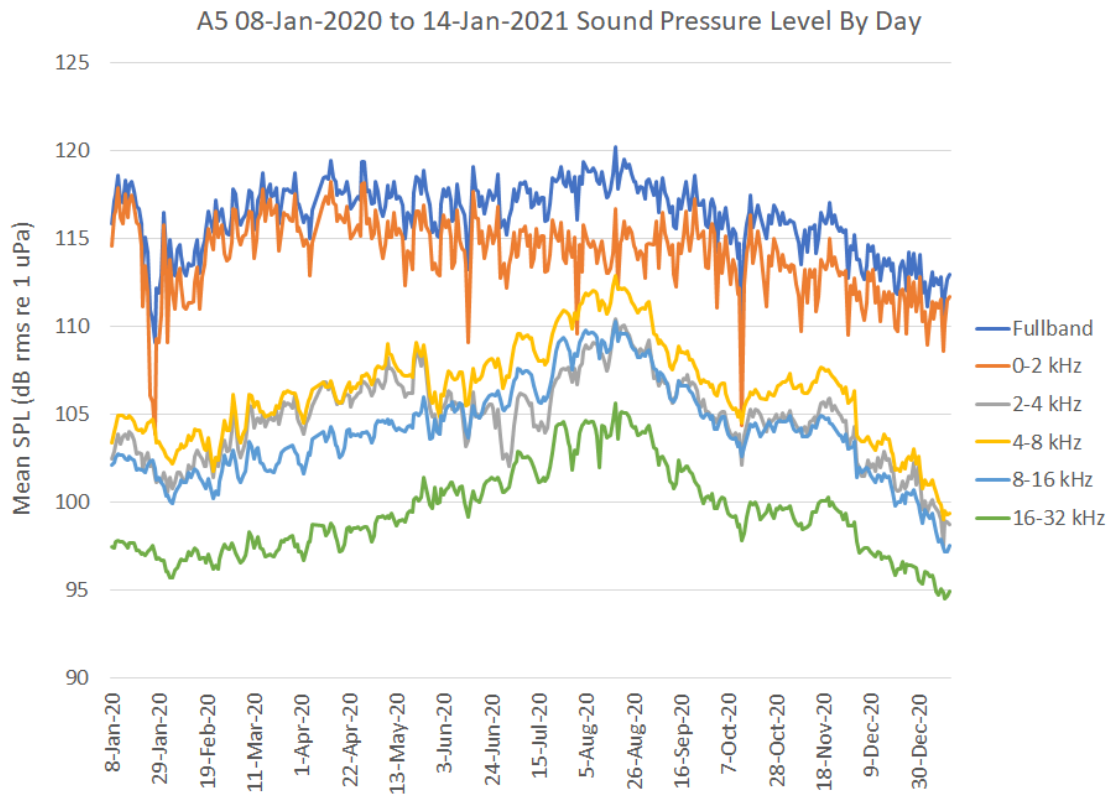


Figure 25: Sound Pressure Level (SPL) by Hour of Day recorded in 2020

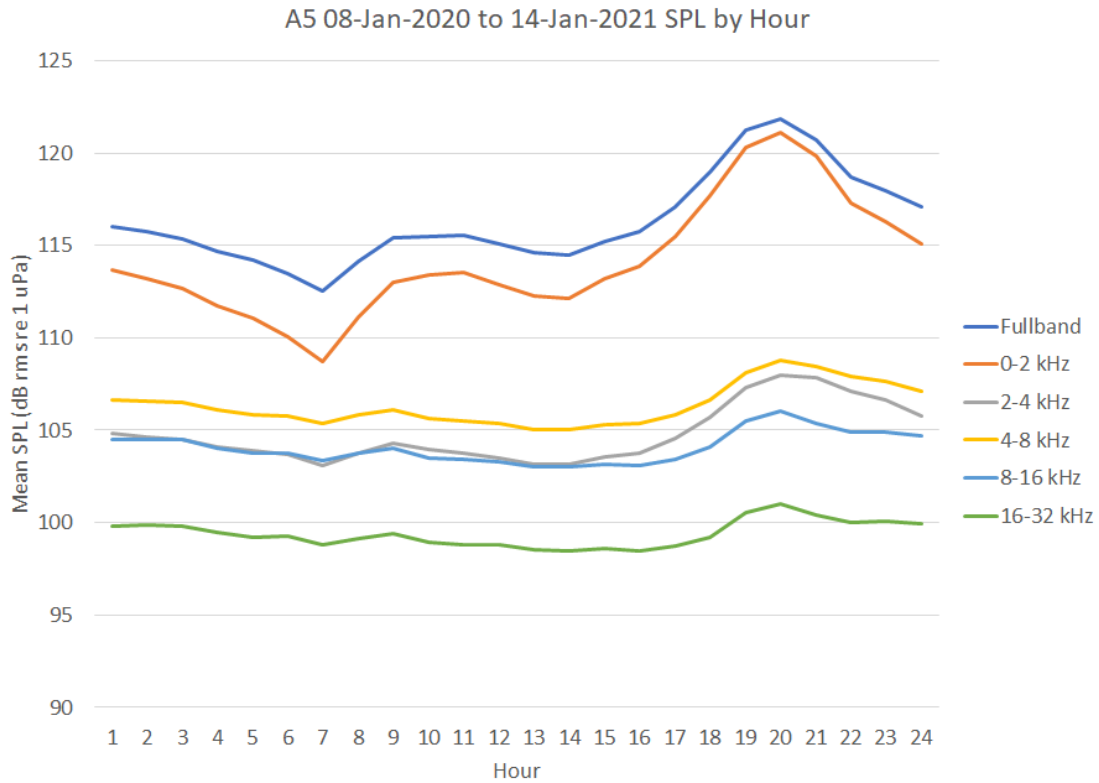
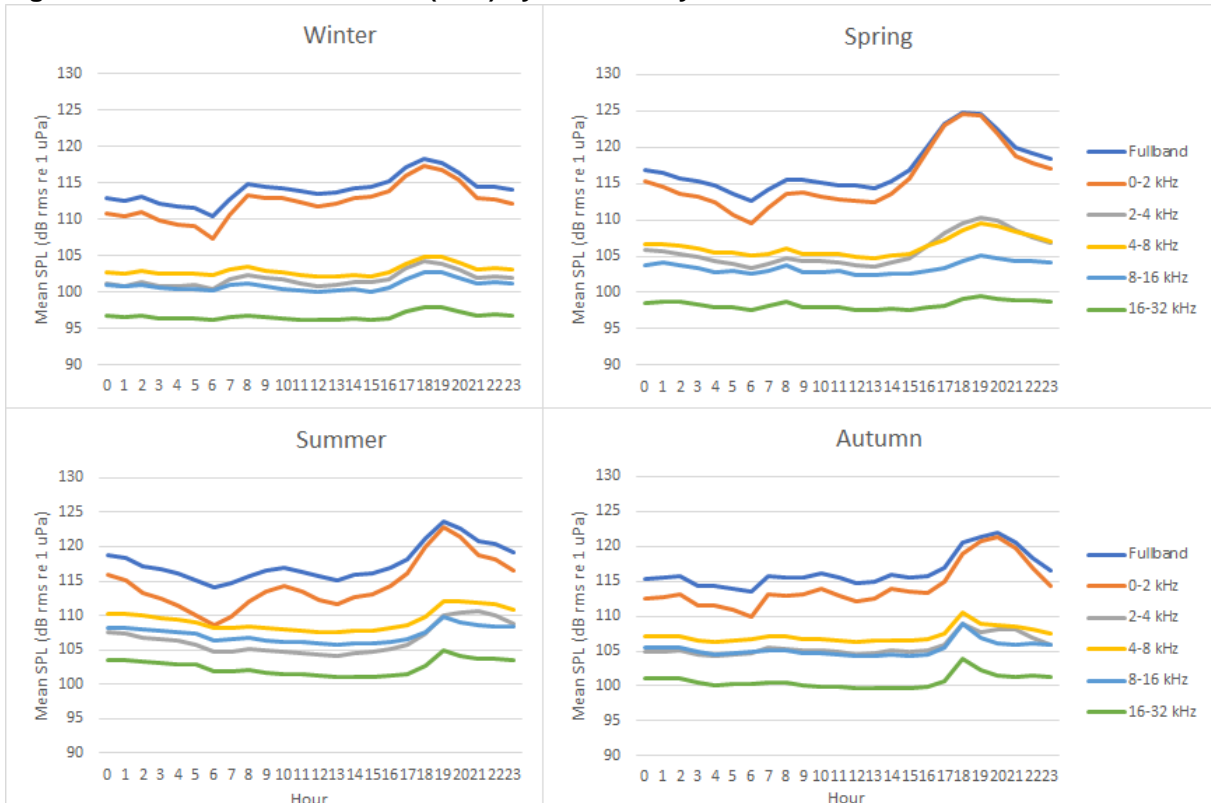


Figure 26: Sound Pressure Level (SPL) by Hour of Day and Solar Season recorded in 2019



[Winter = Dec-Jan-Feb, Spring = Mar-Apr-May, Summer = Jun-Jul-Aug, Autumn = Sep-Oct-Nov]

Table 1: CWD Vessel Survey Effort by Survey Areas

Survey Area	Survey Effort (km)	Survey Effort under Favourable Weather Condition (km)
NEL	1,137.8	1,052.7
NWL	1,801.7	1,609.5
AW	116.5	104.6
WL	684.8	609.1
SWL	1,647.7	1,543.8
Combined	5,388.5	4,919.7

Table 2: CWD Sightings by Survey Areas

Survey Area	No. of Sighting	No. of Dolphin	No. of Sighting under Favourable Weather Condition	No. of Dolphin under Favourable Weather Condition
NEL	0	0	0	0
NWL	7	20	6	19
AW	3	10	3	10
WL	102	412	96	388
SWL	54	174	53	173
Combined	166	616	158	590

Table 3: CWD Encounter Rates by Survey Areas

Survey Area	Encounter Rate (STG)		Encounter Rate (ANI)	
	2019	2020	2019	2020
NEL	0	0	0	0
NWL	1.47	0.37	3.17	1.18
AW	2.74	2.87	15.51	9.56
WL	14.31	15.76	57.52	63.70
SWL	2.53	3.43	8.50	11.20
Combined	3.22	3.21	11.63	11.99

Table 4: Summary of Monthly and Running Quarterly Encounter Rates STG and ANI

Encounter Rate	Winter		Spring			Summer			Autumn			Winter
	Jan 20	Feb 20	Mar 20	Apr 20	May 20	Jun 20	Jul 20	Aug 20	Sep 20	Oct 20	Nov 20	Dec 20
Monthly STG	2.89	3.13	2.42	1.58	2.12	5.86	6.84	1.90	1.18	3.89	3.30	3.99
Monthly ANI	11.32	8.43	7.76	6.77	13.91	21.47	28.62	7.59	4.48	17.80	10.37	7.19
Running Quarterly STG	2.65	2.86	2.82	2.36	2.03	3.13	4.88	4.81	3.23	2.24	2.73	3.71
Running Quarterly ANI	7.86	8.89	9.17	7.63	9.45	13.86	21.16	19.01	13.23	9.54	10.52	11.64

Table 5: CWD Line Transects Parameters and Estimates of Density and Abundance for Western Hong Kong, 2019

Time Period	Stratum	No. of Sightings*	Average Group Size	Trackline Detection Prob. - g(0)	Individual Density (no./100km ²)	Abundance	95% CI (Abund.)	%CV
Jan-Dec 2020	AW	3	3.2	1.0	15.52	1	0-2	54.2
Jan-Dec 2020	DB	1	3.2	1.0	2.09	1	0-4	112.4
Jan-Dec 2020	NEL	0	3.2	1.0	0.00	0	N/A	N/A
Jan-Dec 2020	NWL	4	3.2	1.0	1.34	1	0-3	50.7
Jan-Dec 2020	SWL	46	3.2	1.0	16.12	11	7-15	18.8
Jan-Dec 2020	WL	82	3.2	1.0	72.80	20	15-26	13.6
Jan-Dec 2020	Pooled[^]	136	3.2	1.0	15.73	32	25-41	12.8
Jan-Dec 2020	Winter#	30	3.2	1.0	17.77	36	22-59	41.9
Jan-Dec 2020	Spring#	22	3.2	1.0	11.88	24	13-42	18.7
Jan-Dec 2020	Summer#	50	3.2	1.0	28.65	59	40-86	19.0
Jan-Dec 2020	Autumn#	25	3.2	1.0	14.13	29	19-42	18.7

* After truncation

[^] Pooled abundance not including Airport West (AW). Note that the pooled estimates do not necessarily add up to the sum of the individual stratum estimates, as these are computed separately.

The seasonal estimates do not include AW.

Table 6: Average Group Sizes of CWDs by Survey Areas

Survey Area	Average Group Size of CWDs
NEL	0.00
NWL	2.86
AW	3.33
WL	4.04
SWL	3.22
Overall	3.71 ± 3.01

Table 7: Average Group Sizes of CWDs by Seasons

Solar Season	Average Group Size of CWDs
Spring	4.38
Summer	4.02
Autumn	3.69
Winter	2.80

Table 8: Percentage of CWD Groups recorded as Exhibiting Various Behaviours/Activities, and recorded as having Association with Fishing Boat

Survey Area	Year	Activity				Fishing Boat Association
		Feeding	Travelling	Socialising	Resting/Milling	
AW	2019	100%	-	-	-	-
	2020	67%	-	-	-	33%
NEL	2019	-	-	-	-	-
	2020	-	-	-	-	-
NWL	2019	28%	8%	8%	-	-
	2020	14%	-	-	-	-
WL	2019	19%	8%	14%	1%	11%
	2020	19%	5%	15%	1%	3%
SWL	2019	29%	10%	7%	-	17%
	2020	19%	6%	24%	2%	4%
Overall	2019	25%	8%	13%	1%	2%
	2020	19%	5%	17%	1%	4%

Table 9: Summary of Photo Identification

Individual ID	Date of sighting (dd-mmm-yy)	Sighting No.	Area
NLMM004	16-Jan-20	1	NWL
	20-Feb-20	1	WL
NLMM011	11-Jun-20	1	WL
NLMM012	13-Jul-20	4	WL
NLMM013	13-Jul-20	5	WL
NLMM015	22-Jun-20	1	SWL
		2	SWL
	15-Sep-20	2	WL
NLMM019	20-Jul-20	4	SWL
NLMM020	06-Jul-20	4	WL
NLMM023	09-Sep-20	1	WL
	15-Sep-20	1	WL
NLMM027	20-Jul-20	3	SWL
NLMM034	13-Jul-20	1	WL
NLMM037	20-Jul-20	8	SWL
		9	SWL
NLMM039	07-Aug-20	2	WL
NLMM042	11-Mar-20	1	NWL
NLMM043	16-Jun-20	1	WL
	09-Sep-20	1	WL
NLMM052	13-Jul-20	5	WL
	21-Jul-20	5	SWL
NLMM055	11-Jun-20	5	WL
NLMM057	09-Apr-20	1	WL
		3	WL
NLMM060	06-Jul-20	2	WL
	17-Aug-20	1	WL
NLMM063	22-Jun-20	1	SWL
		2	SWL
	22-Jul-20	1	NWL
NLMM070	09-Apr-20	3	WL
NLMM071	10-Feb-20	1	NWL
NLMM073	10-Feb-20	1	NWL
NLMM074	10-Feb-20	1	NWL
SLMM002	09-Apr-20	6	WL
	12-May-20	5	SWL
	13-May-20	1	WL
		3	WL
	21-Oct-20	4	SWL
SLMM003	10-Jan-20	3	WL
	22-Jan-20	6	SWL
	12-Feb-20	6	WL
	20-Feb-20	3	WL
		4	WL
	12-Mar-20	4	WL
	07-May-20	3	WL
	13-May-20	3	WL
	13-Jul-20	7	WL
	21-Jul-20	4	SWL
	09-Sep-20	2	WL
	15-Sep-20	3	WL
	27-Oct-20	9	WL
	06-Nov-20	3	WL
	09-Dec-20	7	SWL
10-Dec-20	4	SWL	
SLMM007	15-Jan-20	1	WL
		2	WL
	12-Feb-20	7	WL
	09-Apr-20	6	WL
	07-May-20	3	WL

Individual ID	Date of sighting (dd-mmm-yy)	Sighting No.	Area
	13-Jul-20	6	WL
		7	WL
	27-Oct-20	6	WL
	16-Nov-20	4	WL
SLMM010	11-May-20	4	SWL
	13-Jul-20	6	WL
	07-Aug-20	4	WL
	21-Oct-20	4	SWL
	27-Oct-20	7	WL
	06-Nov-20	6	WL
	17-Nov-20	1	NWL
	19-Nov-20	2	SWL
	10-Dec-20	4	SWL
SLMM011	23-Mar-20	17	SWL
		18	SWL
SLMM012	22-Jan-20	5	SWL
	12-Feb-20	2	WL
	20-Feb-20	3	WL
	12-Mar-20	4	WL
	11-May-20	4	SWL
	21-Jul-20	2	SWL
	09-Sep-20	2	WL
	21-Oct-20	4	SWL
	19-Nov-20	2	SWL
SLMM014	07-Jan-20	3	SWL
	20-Feb-20	3	WL
	11-Mar-20	2	NWL
	12-Mar-20	3	WL
	09-Apr-20	6	WL
	11-May-20	4	SWL
	18-Jun-20	1	SWL
		2	SWL
	06-Jul-20	3	WL
	07-Aug-20	4	WL
	21-Oct-20	4	SWL
10-Dec-20	5	SWL	
SLMM019	26-Feb-20	15	SWL
SLMM022	15-Jan-20	1	WL
		2	WL
	27-Oct-20	7	WL
SLMM023	15-Jan-20	4	WL
	12-Feb-20	2	WL
	11-May-20	4	SWL
	13-May-20	1	WL
		3	WL
	21-Oct-20	3	SWL
		4	SWL
16-Nov-20	3	WL	
SLMM025	11-May-20	4	SWL
	16-Jun-20	5	WL
	18-Jun-20	1	SWL
	13-Jul-20	7	WL
	20-Jul-20	3	SWL
	21-Oct-20	3	SWL
4		SWL	
SLMM027	10-Jan-20	3	WL
	21-Jul-20	5	SWL
SLMM028	11-Mar-20	2	NWL
	09-Apr-20	6	WL
	16-Jun-20	5	WL
	18-Jun-20	1	SWL
SLMM030	07-May-20	3	WL

Individual ID	Date of sighting (dd-mmm-yy)	Sighting No.	Area
	13-May-20	4	WL
SLMM031	20-Feb-20	3	WL
	26-Feb-20	15	SWL
	23-Mar-20	17	SWL
		18	SWL
	09-Apr-20	6	WL
	12-May-20	5	SWL
	21-Oct-20	2	SWL
SLMM034	23-Mar-20	17	SWL
		18	SWL
	11-May-20	4	SWL
	13-May-20	1	WL
		3	WL
SLMM035	09-Dec-20	1	SWL
		5	SWL
SLMM036	11-Jun-20	1	WL
SLMM037	07-Jan-20	2	SWL
	12-Feb-20	7	WL
		3	WL
	20-Feb-20	4	WL
		4	WL
	12-Mar-20	4	WL
	09-Apr-20	1	WL
	20-Jul-20	5	SWL
	09-Sep-20	2	WL
	16-Nov-20	6	WL
	19-Nov-20	2	SWL
	09-Dec-20	5	SWL
7		SWL	
SLMM044	18-Mar-20	3	WL
	13-May-20	1	WL
SLMM045	09-Apr-20	4	WL
	15-Sep-20	2	WL
SLMM049	07-Jan-20	3	SWL
	13-May-20	3	WL
	18-Jun-20	2	SWL
	13-Jul-20	7	WL
	20-Jul-20	5	SWL
	07-Aug-20	4	WL
	27-Oct-20	6	WL
	19-Nov-20	2	SWL
SLMM050	15-Jan-20	4	WL
	09-Apr-20	6	WL
	21-Oct-20	4	SWL
SLMM052	10-Jan-20	3	WL
	15-Jan-20	2	WL
	12-Mar-20	4	WL
	11-May-20	4	SWL
	13-May-20	3	WL
	13-Jul-20	7	WL
	07-Aug-20	4	WL
	27-Oct-20	6	WL
16-Nov-20	3	WL	
SLMM053	07-Jan-20	3	SWL
SLMM058	15-Jan-20	1	WL
	12-Feb-20	1	AW
	09-Apr-20	6	WL
SLMM059	18-Mar-20	2	WL
	12-May-20	5	SWL
	21-Oct-20	4	SWL
SLMM060	20-Jul-20	1	SWL
	21-Jul-20	7	SWL
SLMM062	20-Jul-20	3	SWL

Individual ID	Date of sighting (dd-mmm-yy)	Sighting No.	Area
	21-Jul-20	2	SWL
SLMM064	06-Nov-20	1	WL
SLMM068	12-May-20	5	SWL
SLMM070	11-May-20	4	SWL
	22-Jun-20	3	SWL
	21-Jul-20	2	SWL
SLMM072	12-May-20	6	SWL
	13-May-20	3	WL
	09-Sep-20	2	WL
SLMM073	16-Nov-20	4	WL
WLMM001	10-Jan-20	1	WL
		3	WL
	15-Jan-20	1	WL
	22-Jan-20	6	SWL
	07-May-20	3	WL
	13-Jul-20	6	WL
		7	WL
WLMM003	10-Jan-20	1	WL
	15-Jan-20	3	WL
	20-Feb-20	1	WL
	11-Jun-20	7	WL
WLMM004	12-Feb-20	1	AW
	16-Jun-20	5	WL
WLMM005	15-Jan-20	3	WL
	07-May-20	3	WL
WLMM006	15-Jan-20	3	WL
	09-Apr-20	6	WL
	07-May-20	3	WL
WLMM007	12-Feb-20	3	WL
	09-Apr-20	6	WL
	07-May-20	3	WL
	13-May-20	3	WL
	07-Aug-20	4	WL
	21-Oct-20	4	SWL
	27-Oct-20	6	WL
	06-Nov-20	5	WL
	6	WL	
WLMM008	21-Jul-20	5	SWL
	07-Aug-20	4	WL
	21-Oct-20	4	SWL
WLMM009	15-Jan-20	3	WL
	07-May-20	2	WL
	13-Jul-20	6	WL
	20-Jul-20	4	SWL
WLMM011	22-Jun-20	2	SWL
WLMM013	09-Apr-20	6	WL
	16-Jun-20	2	WL
	15-Sep-20	1	WL
WLMM015	16-Jun-20	4	WL
WLMM018	15-Jan-20	4	WL
	13-May-20	3	WL
	22-Jun-20	4	SWL
	21-Oct-20	3	SWL
WLMM019	22-Jul-20	1	NWL
WLMM027	07-May-20	1	WL
	13-May-20	3	WL
WLMM028	15-Jan-20	1	WL
		2	WL
	09-Apr-20	6	WL
	07-May-20	3	WL
	20-Jul-20	4	SWL
	27-Oct-20	7	WL

Individual ID	Date of sighting (dd-mmm-yy)	Sighting No.	Area
WLMM029	10-Dec-20	7	SWL
	09-Apr-20	6	WL
	07-May-20	3	WL
	20-Jul-20	4	SWL
WLMM030	10-Dec-20	7	SWL
	16-Jun-20	2	WL
	06-Jul-20	2	WL
WLMM038	13-Jul-20	1	WL
WLMM040	20-Feb-20	2	WL
	18-Mar-20	3	WL
WLMM043	11-Jun-20	4	WL
		7	WL
	13-Jul-20	5	WL
WLMM047	13-Jul-20	7	WL
WLMM056	07-Jan-20	2	SWL
		3	SWL
	09-Apr-20	1	WL
	09-Sep-20	2	WL
WLMM060	27-Oct-20	6	WL
	09-Apr-20	1	WL
	13-Jul-20	6	WL
WLMM062	27-Oct-20	1	WL
		2	WL
WLMM063	16-Jun-20	2	WL
	17-Aug-20	1	WL
WLMM064	21-Jul-20	3	SWL
	16-Dec-20	1	AW
WLMM065	16-Dec-20	2	WL
WLMM068	15-Jan-20	3	WL
	19-Oct-20	1	WL
WLMM070	17-Aug-20	1	WL
	11-May-20	4	SWL
	21-Oct-20	4	SWL
WLMM071	27-Oct-20	1	WL
	12-Feb-20	1	AW
	06-Jul-20	2	WL
	27-Oct-20	1	WL
WLMM073		2	WL
	11-May-20	4	SWL
	13-May-20	3	WL
	22-Jun-20	4	SWL
	07-Aug-20	4	WL
	21-Oct-20	3	SWL
WLMM075		4	SWL
	16-Nov-20	5	WL
	09-Apr-20	1	WL
WLMM076		3	WL
	27-Oct-20	4	WL
WLMM079	07-Jan-20	4	SWL
	13-Jul-20	7	WL
	20-Jul-20	5	SWL
	21-Jul-20	4	SWL
	09-Sep-20	2	WL
	15-Sep-20	3	WL
	27-Oct-20	9	WL
	06-Nov-20	3	WL
	16-Nov-20	3	WL
WLMM080	13-Jul-20	6	WL
	16-Nov-20	1	AW
WLMM081	07-May-20	3	WL
	16-Jun-20	4	WL

Individual ID	Date of sighting (dd-mmm-yy)	Sighting No.	Area
WLMM082	07-May-20	3	WL
	16-Jun-20	4	WL
WLMM085	13-Jul-20	6	WL
		7	WL
	27-Oct-20	8	WL
WLMM086	13-Jul-20	2	WL
WLMM089	13-Jul-20	5	WL
WLMM090	11-Jun-20	7	WL
	16-Jun-20	5	WL
WLMM091	13-Jul-20	2	WL
		3	WL
WLMM092	13-Jul-20	2	WL
		3	WL
WLMM095	17-Aug-20	1	WL
WLMM098	13-Jul-20	1	WL
WLMM102	06-Jul-20	1	WL
WLMM103	17-Aug-20	1	WL
WLMM107	11-Jun-20	5	WL
		6	WL
	06-Jul-20	2	WL
	06-Nov-20	1	WL
WLMM109	10-Jan-20	3	WL
	11-Jun-20	4	WL
	07-Aug-20	4	WL
WLMM112	13-Jul-20	6	WL
WLMM114	07-Jan-20	3	SWL
	10-Jan-20	2	WL
	12-Feb-20	5	WL
	09-Apr-20	1	WL
		2	WL
	11-May-20	4	SWL
	13-May-20	1	WL
	18-Jun-20	2	SWL
	22-Jun-20	6	SWL
	21-Oct-20	4	SWL
	06-Nov-20	3	WL
16-Nov-20	6	WL	
WLMM122	10-Feb-20	1	NWL
	21-Jul-20	7	SWL
WLMM131	20-Feb-20	4	WL
	15-Apr-20	1	WL
	13-May-20	3	WL
	18-Jun-20	2	SWL
	07-Aug-20	3	WL
	10-Aug-20	2	SWL
		3	SWL
27-Oct-20	4	WL	
WLMM133	17-Aug-20	1	WL
WLMM135	06-Nov-20	1	WL
WLMM136	06-Jul-20	2	WL
WLMM138	07-May-20	3	WL
WLMM141	11-Jun-20	5	WL
WLMM142	11-Jun-20	4	WL
WLMM147	13-Jul-20	7	WL
	20-Jul-20	5	SWL
	21-Jul-20	4	SWL
	27-Oct-20	9	WL
	06-Nov-20	3	WL
	16-Nov-20	3	WL
WLMM149	11-Jun-20	5	WL
	06-Jul-20	2	WL
	06-Nov-20	1	WL

Individual ID	Date of sighting (dd-mmm-yy)	Sighting No.	Area
WLMM150	15-Jan-20	1	WL
	07-May-20	3	WL
	13-May-20	3	WL
	27-Oct-20	7	WL
	06-Nov-20	5	WL
WLMM151	18-Mar-20	2	WL
WLMM152	18-Mar-20	2	WL
WLMM153	16-Jun-20	2	WL
WLMM154	06-Jul-20	2	WL
WLMM155	13-Jul-20	1	WL
WLMM156	13-Jul-20	1	WL
WLMM157	13-Jul-20	7	WL
WLMM158	13-Jul-20	7	WL
	27-Oct-20	3	WL
WLMM159	13-Jul-20	7	WL
WLMM160	07-Aug-20	4	WL
	06-Nov-20	5	WL
WLMM161	17-Aug-20	1	WL
WLMM162	17-Aug-20	1	WL
WLMM163	06-Nov-20	5	WL

Table 10: Land-based Survey, Theodolite Effort and CWD Group Summary in 2020

Land-based Station	# of Survey Sessions	Survey Effort (hh:mm)	# CWD Groups Sighted	CWD Group Sighting per Survey Hr	# Groups After Filtering	# of 10-minutes segments
Sha Chau	12	72:00	0	0	0	0
Lung Kwu Chau	12	72:00	21	0.29	6	10
TOTAL	24	144:00	21	0.15	6	10

Table 11: Land-based CWD Focal Group Size Summary in 2020

Category	n (sample size)	Minimum # Individuals	Maximum # Individuals	Mean Grp Size	Standard Deviation
Lung Kwu Chau Station Total	21	1	4	1.76	0.89
Winter	12	1	3	1.67	0.8
Spring	4	1	4	2	1.4
Summer	2	1	2	1.5	0.71
Autumn	3	1	3	2	1
Dry	15	1	3	1.73	0.8
Wet	6	1	4	1.83	1.2
Inside SCLKCMP boundary	10	1	3	1.8	0.8
Crossing SCLKCMP boundary	2	1	4	2.5	2.1
Outside SCLKCMP boundary	9	1	3	1.56	0.7

Table 12: Summary of PAM Deployments and Dolphin Detections, 08 Jan 2020 to 14 Jan 2021

Site	Dep #	Data start (dd/mm/yyyy)	Data end (dd/mm/yyyy)	# recording days	# files	Days with dolphins (%)	Files with dolphins (%)
A5	1	08/01/2020	21/02/2020	45	12879	14 (31%)	43 (0.33%)
A5	2	22/02/2020	07/04/2020	46	13662	17 (37%)	39 (0.29%)
A5	3	11/04/2020	27/05/2020	47	13473	17 (36%)	29 (0.22%)
A5	4	28/05/2020	22/07/2020	56	16083	9 (16%)	10 (0.06%)
A5	5	23/07/2020	03/09/2020	43	12276	0 (0%)	0 (0%)
A5	6	04/09/2020	22/10/2020	49	13963	3 (6%)	3 (0.02%)
A5	7	24/10/2020	04/12/2020	42	11700	3 (7%)	4 (0.03%)
A5	8	04/12/2020	14/01/2021	42	12015	20 (48%)	68 (0.57%)
A5	Total	08/01/2020	14/01/2021	370	106051	83 (22%)	196 (0.18%)

Table 13: Summary of PAM Deployments and Dolphin Detections in the Previous Year (10 Jan 2019 to 07 Jan 2020)

Site	Dep #	Data start (dd/mm/yyyy)	Data end (dd/mm/yyyy)	# recording days	# files	Days with dolphins (%)	Files with dolphins (%)
A5	1	10/01/2019	21/02/2019	43	12232	23 (53%)	105 (0.86%)
A5	2	22/02/2019	12/04/2019	50	14166	28 (56%)	79 (0.56%)
A5	3	13/04/2019	24/05/2019	42	11954	26 (62%)	62 (0.52%)
A5	4	25/05/2019	16/07/2019	53	15113	14 (26%)	24 (0.16%)
A5	5	17/07/2019	10/09/2019	56	16128	19 (34%)	59 (0.37%)
A5	6	12/09/2019	22/10/2019	41	11808	8 (20%)	19 (0.16%)
A5	7	24/10/2019	06/12/2019	44	12384	6 (14%)	7 (0.06%)
A5	8	06/12/2019	07/01/2020	33	9729	13 (39%)	23 (0.24%)
A5	Total	10/01/2019	07/01/2020	362	103514	137 (38%)	378 (0.37%)

CWD Small Vessel Line-transect Survey

Survey Effort Data

DATE	AREA	BEAU	KM SEARCHED	SEASON	VESSEL	TYPE	P/S
6-Jan-20	DB	2	6.450	WINTER	32166	3RS ET	P
6-Jan-20	DB	3	2.190	WINTER	32166	3RS ET	P
6-Jan-20	DB	2	4.760	WINTER	32166	3RS ET	S
6-Jan-20	NEL	2	17.100	WINTER	32166	3RS ET	P
6-Jan-20	NEL	3	20.610	WINTER	32166	3RS ET	P
6-Jan-20	NEL	2	6.200	WINTER	32166	3RS ET	S
6-Jan-20	NEL	3	3.790	WINTER	32166	3RS ET	S
7-Jan-20	SWL	1	3.200	WINTER	32166	3RS ET	P
7-Jan-20	SWL	2	49.770	WINTER	32166	3RS ET	P
7-Jan-20	SWL	2	15.800	WINTER	32166	3RS ET	S
10-Jan-20	AW	3	4.860	WINTER	32166	3RS ET	P
10-Jan-20	WL	2	10.760	WINTER	32166	3RS ET	P
10-Jan-20	WL	3	5.190	WINTER	32166	3RS ET	P
10-Jan-20	WL	4	5.890	WINTER	32166	3RS ET	P
10-Jan-20	WL	2	4.910	WINTER	32166	3RS ET	S
10-Jan-20	WL	3	0.860	WINTER	32166	3RS ET	S
10-Jan-20	WL	4	2.340	WINTER	32166	3RS ET	S
13-Jan-20	DB	2	1.580	WINTER	32166	3RS ET	P
13-Jan-20	DB	3	7.420	WINTER	32166	3RS ET	P
13-Jan-20	DB	2	1.650	WINTER	32166	3RS ET	S
13-Jan-20	DB	3	2.950	WINTER	32166	3RS ET	S
13-Jan-20	NEL	2	15.540	WINTER	32166	3RS ET	P
13-Jan-20	NEL	3	21.900	WINTER	32166	3RS ET	P
13-Jan-20	NEL	2	4.160	WINTER	32166	3RS ET	S
13-Jan-20	NEL	3	6.200	WINTER	32166	3RS ET	S
15-Jan-20	AW	3	1.170	WINTER	32166	3RS ET	P
15-Jan-20	AW	4	4.000	WINTER	32166	3RS ET	P
15-Jan-20	WL	3	7.366	WINTER	32166	3RS ET	P
15-Jan-20	WL	4	8.390	WINTER	32166	3RS ET	P
15-Jan-20	WL	5	1.550	WINTER	32166	3RS ET	P
15-Jan-20	WL	3	8.514	WINTER	32166	3RS ET	S
15-Jan-20	WL	4	2.110	WINTER	32166	3RS ET	S
16-Jan-20	NWL	2	25.710	WINTER	32166	3RS ET	P
16-Jan-20	NWL	3	36.900	WINTER	32166	3RS ET	P
16-Jan-20	NWL	4	0.300	WINTER	32166	3RS ET	P
16-Jan-20	NWL	2	5.570	WINTER	32166	3RS ET	S
16-Jan-20	NWL	3	5.220	WINTER	32166	3RS ET	S
16-Jan-20	NWL	4	0.200	WINTER	32166	3RS ET	S
17-Jan-20	NWL	2	4.600	WINTER	32166	3RS ET	P
17-Jan-20	NWL	3	49.000	WINTER	32166	3RS ET	P
17-Jan-20	NWL	4	9.300	WINTER	32166	3RS ET	P
17-Jan-20	NWL	2	1.000	WINTER	32166	3RS ET	S
17-Jan-20	NWL	3	9.500	WINTER	32166	3RS ET	S
17-Jan-20	NWL	4	2.100	WINTER	32166	3RS ET	S
22-Jan-20	SWL	1	2.200	WINTER	32166	3RS ET	P
22-Jan-20	SWL	2	47.923	WINTER	32166	3RS ET	P
22-Jan-20	SWL	3	4.200	WINTER	32166	3RS ET	P
22-Jan-20	SWL	2	14.227	WINTER	32166	3RS ET	S

DATE	AREA	BEAU	KM SEARCHED	SEASON	VESSEL	TYPE	P/S
22-Jan-20	SWL	3	1.200	WINTER	32166	3RS ET	S
10-Feb-20	NWL	2	58.000	WINTER	32166	3RS ET	P
10-Feb-20	NWL	3	5.360	WINTER	32166	3RS ET	P
10-Feb-20	NWL	2	11.700	WINTER	32166	3RS ET	S
11-Feb-20	NWL	2	30.200	WINTER	32166	3RS ET	P
11-Feb-20	NWL	3	33.800	WINTER	32166	3RS ET	P
11-Feb-20	NWL	2	4.600	WINTER	32166	3RS ET	S
11-Feb-20	NWL	3	6.900	WINTER	32166	3RS ET	S
12-Feb-20	AW	2	4.552	WINTER	32166	3RS ET	P
12-Feb-20	WL	2	18.710	WINTER	32166	3RS ET	P
12-Feb-20	WL	3	0.959	WINTER	32166	3RS ET	P
12-Feb-20	WL	2	8.676	WINTER	32166	3RS ET	S
12-Feb-20	WL	3	1.631	WINTER	32166	3RS ET	S
17-Feb-20	DB	3	5.630	WINTER	32166	3RS ET	P
17-Feb-20	DB	4	3.190	WINTER	32166	3RS ET	P
17-Feb-20	DB	3	3.600	WINTER	32166	3RS ET	S
17-Feb-20	DB	4	0.980	WINTER	32166	3RS ET	S
17-Feb-20	NEL	2	7.100	WINTER	32166	3RS ET	P
17-Feb-20	NEL	3	29.780	WINTER	32166	3RS ET	P
17-Feb-20	NEL	2	3.900	WINTER	32166	3RS ET	S
17-Feb-20	NEL	3	6.420	WINTER	32166	3RS ET	S
18-Feb-20	DB	3	4.640	WINTER	32166	3RS ET	P
18-Feb-20	DB	4	3.960	WINTER	32166	3RS ET	P
18-Feb-20	DB	3	3.580	WINTER	32166	3RS ET	S
18-Feb-20	DB	4	0.920	WINTER	32166	3RS ET	S
18-Feb-20	NEL	2	15.530	WINTER	32166	3RS ET	P
18-Feb-20	NEL	3	21.650	WINTER	32166	3RS ET	P
18-Feb-20	NEL	2	5.120	WINTER	32166	3RS ET	S
18-Feb-20	NEL	3	5.000	WINTER	32166	3RS ET	S
20-Feb-20	AW	3	4.920	WINTER	32166	3RS ET	P
20-Feb-20	WL	2	13.391	WINTER	32166	3RS ET	P
20-Feb-20	WL	3	5.057	WINTER	32166	3RS ET	P
20-Feb-20	WL	2	9.593	WINTER	32166	3RS ET	S
20-Feb-20	WL	4	1.013	WINTER	32166	3RS ET	S
21-Feb-20	SWL	3	26.930	WINTER	32166	3RS ET	P
21-Feb-20	SWL	4	18.000	WINTER	32166	3RS ET	P
21-Feb-20	SWL	5	9.200	WINTER	32166	3RS ET	P
21-Feb-20	SWL	3	7.600	WINTER	32166	3RS ET	S
21-Feb-20	SWL	4	7.700	WINTER	32166	3RS ET	S
21-Feb-20	SWL	5	1.270	WINTER	32166	3RS ET	S
26-Feb-20	SWL	1	1.800	WINTER	32166	3RS ET	P
26-Feb-20	SWL	2	49.708	WINTER	32166	3RS ET	P
26-Feb-20	SWL	3	0.840	WINTER	32166	3RS ET	P
26-Feb-20	SWL	2	13.918	WINTER	32166	3RS ET	S
26-Feb-20	SWL	3	1.970	WINTER	32166	3RS ET	S
2-Mar-20	DB	2	5.630	SPRING	32166	3RS ET	P
2-Mar-20	DB	3	3.340	SPRING	32166	3RS ET	P
2-Mar-20	DB	2	2.840	SPRING	32166	3RS ET	S
2-Mar-20	DB	3	1.790	SPRING	32166	3RS ET	S

DATE	AREA	BEAU	KM SEARCHED	SEASON	VESSEL	TYPE	P/S
2-Mar-20	NEL	2	2.500	SPRING	32166	3RS ET	P
2-Mar-20	NEL	3	32.140	SPRING	32166	3RS ET	P
2-Mar-20	NEL	4	2.600	SPRING	32166	3RS ET	P
2-Mar-20	NEL	2	1.200	SPRING	32166	3RS ET	S
2-Mar-20	NEL	3	8.160	SPRING	32166	3RS ET	S
2-Mar-20	NEL	4	1.000	SPRING	32166	3RS ET	S
6-Mar-20	DB	2	5.790	SPRING	32166	3RS ET	P
6-Mar-20	DB	3	2.980	SPRING	32166	3RS ET	P
6-Mar-20	DB	1	0.880	SPRING	32166	3RS ET	S
6-Mar-20	DB	2	2.450	SPRING	32166	3RS ET	S
6-Mar-20	DB	3	1.200	SPRING	32166	3RS ET	S
6-Mar-20	NEL	2	3.460	SPRING	32166	3RS ET	P
6-Mar-20	NEL	3	33.340	SPRING	32166	3RS ET	P
6-Mar-20	NEL	2	1.200	SPRING	32166	3RS ET	S
6-Mar-20	NEL	3	9.900	SPRING	32166	3RS ET	S
11-Mar-20	NWL	2	4.786	SPRING	32166	3RS ET	P
11-Mar-20	NWL	3	53.890	SPRING	32166	3RS ET	P
11-Mar-20	NWL	4	1.400	SPRING	32166	3RS ET	P
11-Mar-20	NWL	3	12.430	SPRING	32166	3RS ET	S
12-Mar-20	AW	4	4.920	SPRING	32166	3RS ET	P
12-Mar-20	WL	3	1.675	SPRING	32166	3RS ET	P
12-Mar-20	WL	4	15.140	SPRING	32166	3RS ET	P
12-Mar-20	WL	5	2.008	SPRING	32166	3RS ET	P
12-Mar-20	WL	3	0.480	SPRING	32166	3RS ET	S
12-Mar-20	WL	4	7.380	SPRING	32166	3RS ET	S
12-Mar-20	WL	5	1.762	SPRING	32166	3RS ET	S
17-Mar-20	NWL	2	39.340	SPRING	32166	3RS ET	P
17-Mar-20	NWL	3	23.260	SPRING	32166	3RS ET	P
17-Mar-20	NWL	4	1.000	SPRING	32166	3RS ET	P
17-Mar-20	NWL	2	6.700	SPRING	32166	3RS ET	S
17-Mar-20	NWL	3	4.900	SPRING	32166	3RS ET	S
18-Mar-20	AW	2	5.000	SPRING	32166	3RS ET	P
18-Mar-20	WL	2	9.543	SPRING	32166	3RS ET	P
18-Mar-20	WL	3	9.425	SPRING	32166	3RS ET	P
18-Mar-20	WL	2	7.497	SPRING	32166	3RS ET	S
18-Mar-20	WL	3	2.691	SPRING	32166	3RS ET	S
19-Mar-20	SWL	1	6.940	SPRING	32166	3RS ET	P
19-Mar-20	SWL	2	38.570	SPRING	32166	3RS ET	P
19-Mar-20	SWL	3	8.050	SPRING	32166	3RS ET	P
19-Mar-20	SWL	2	14.355	SPRING	32166	3RS ET	S
19-Mar-20	SWL	3	2.200	SPRING	32166	3RS ET	S
23-Mar-20	SWL	1	6.890	SPRING	32166	3RS ET	P
23-Mar-20	SWL	2	45.972	SPRING	32166	3RS ET	P
23-Mar-20	SWL	1	1.350	SPRING	32166	3RS ET	S
23-Mar-20	SWL	2	14.535	SPRING	32166	3RS ET	S
3-Apr-20	NEL	2	1.270	SPRING	32166	3RS ET	P
3-Apr-20	NEL	3	26.900	SPRING	32166	3RS ET	P
3-Apr-20	NEL	4	8.700	SPRING	32166	3RS ET	P
3-Apr-20	NEL	3	9.830	SPRING	32166	3RS ET	S

DATE	AREA	BEAU	KM SEARCHED	SEASON	VESSEL	TYPE	P/S
3-Apr-20	NEL	4	1.000	SPRING	32166	3RS ET	S
3-Apr-20	DB	2	2.250	SPRING	32166	3RS ET	P
3-Apr-20	DB	3	6.560	SPRING	32166	3RS ET	P
3-Apr-20	DB	3	4.490	SPRING	32166	3RS ET	S
7-Apr-20	DB	3	8.820	SPRING	32166	3RS ET	P
7-Apr-20	DB	3	4.180	SPRING	32166	3RS ET	S
7-Apr-20	NEL	1	10.100	SPRING	32166	3RS ET	P
7-Apr-20	NEL	2	27.170	SPRING	32166	3RS ET	P
7-Apr-20	NEL	1	1.000	SPRING	32166	3RS ET	S
7-Apr-20	NEL	2	9.330	SPRING	32166	3RS ET	S
9-Apr-20	AW	2	5.030	SPRING	32166	3RS ET	P
9-Apr-20	WL	2	10.238	SPRING	32166	3RS ET	P
9-Apr-20	WL	3	6.538	SPRING	32166	3RS ET	P
9-Apr-20	WL	4	1.390	SPRING	32166	3RS ET	P
9-Apr-20	WL	2	6.432	SPRING	32166	3RS ET	S
9-Apr-20	WL	3	2.932	SPRING	32166	3RS ET	S
9-Apr-20	WL	4	0.910	SPRING	32166	3RS ET	S
15-Apr-20	AW	2	5.040	SPRING	32166	3RS ET	P
15-Apr-20	WL	2	20.680	SPRING	32166	3RS ET	P
15-Apr-20	WL	2	10.420	SPRING	32166	3RS ET	S
16-Apr-20	SWL	2	52.486	SPRING	32166	3RS ET	P
16-Apr-20	SWL	2	15.854	SPRING	32166	3RS ET	S
17-Apr-20	SWL	2	26.394	SPRING	32166	3RS ET	P
17-Apr-20	SWL	3	27.056	SPRING	32166	3RS ET	P
17-Apr-20	SWL	2	9.230	SPRING	32166	3RS ET	S
17-Apr-20	SWL	3	8.050	SPRING	32166	3RS ET	S
20-Apr-20	NWL	2	41.800	SPRING	32166	3RS ET	P
20-Apr-20	NWL	3	22.200	SPRING	32166	3RS ET	P
20-Apr-20	NWL	2	7.600	SPRING	32166	3RS ET	S
20-Apr-20	NWL	3	4.200	SPRING	32166	3RS ET	S
21-Apr-20	NWL	2	26.840	SPRING	32166	3RS ET	P
21-Apr-20	NWL	3	36.760	SPRING	32166	3RS ET	P
21-Apr-20	NWL	2	4.300	SPRING	32166	3RS ET	S
21-Apr-20	NWL	3	7.600	SPRING	32166	3RS ET	S
4-May-20	DB	2	8.950	SPRING	32166	3RS ET	P
4-May-20	DB	2	4.250	SPRING	32166	3RS ET	S
4-May-20	NEL	2	32.350	SPRING	32166	3RS ET	P
4-May-20	NEL	3	4.500	SPRING	32166	3RS ET	P
4-May-20	NEL	2	8.050	SPRING	32166	3RS ET	S
4-May-20	NEL	3	1.800	SPRING	32166	3RS ET	S
6-May-20	NWL	2	17.400	SPRING	32166	3RS ET	P
6-May-20	NWL	3	45.000	SPRING	32166	3RS ET	P
6-May-20	NWL	3	13.400	SPRING	32166	3RS ET	S
7-May-20	AW	3	4.890	SPRING	32166	3RS ET	P
7-May-20	WL	3	19.292	SPRING	32166	3RS ET	P
7-May-20	WL	3	11.318	SPRING	32166	3RS ET	S
11-May-20	SWL	1	2.700	SPRING	32166	3RS ET	P
11-May-20	SWL	2	51.714	SPRING	32166	3RS ET	P
11-May-20	SWL	1	1.300	SPRING	32166	3RS ET	S

DATE	AREA	BEAU	KM SEARCHED	SEASON	VESSEL	TYPE	P/S
11-May-20	SWL	2	14.740	SPRING	32166	3RS ET	S
12-May-20	SWL	2	42.776	SPRING	32166	3RS ET	P
12-May-20	SWL	3	11.880	SPRING	32166	3RS ET	P
12-May-20	SWL	2	13.052	SPRING	32166	3RS ET	S
12-May-20	SWL	3	2.150	SPRING	32166	3RS ET	S
13-May-20	AW	1	5.060	SPRING	32166	3RS ET	P
13-May-20	WL	1	1.220	SPRING	32166	3RS ET	P
13-May-20	WL	2	9.124	SPRING	32166	3RS ET	P
13-May-20	WL	3	2.062	SPRING	32166	3RS ET	P
13-May-20	WL	4	6.239	SPRING	32166	3RS ET	P
13-May-20	WL	2	4.441	SPRING	32166	3RS ET	S
13-May-20	WL	3	1.748	SPRING	32166	3RS ET	S
13-May-20	WL	4	3.271	SPRING	32166	3RS ET	S
18-May-20	DB	3	6.360	SPRING	32166	3RS ET	P
18-May-20	DB	4	2.830	SPRING	32166	3RS ET	P
18-May-20	DB	3	1.720	SPRING	32166	3RS ET	S
18-May-20	DB	4	2.590	SPRING	32166	3RS ET	S
18-May-20	NEL	2	24.600	SPRING	32166	3RS ET	P
18-May-20	NEL	3	12.500	SPRING	32166	3RS ET	P
18-May-20	NEL	2	6.200	SPRING	32166	3RS ET	S
18-May-20	NEL	3	3.900	SPRING	32166	3RS ET	S
20-May-20	NWL	2	2.300	SPRING	32166	3RS ET	P
20-May-20	NWL	3	43.690	SPRING	32166	3RS ET	P
20-May-20	NWL	4	17.310	SPRING	32166	3RS ET	P
20-May-20	NWL	3	9.100	SPRING	32166	3RS ET	S
20-May-20	NWL	4	2.600	SPRING	32166	3RS ET	S
9-Jun-20	NWL	2	2.300	SUMMER	32166	3RS ET	P
9-Jun-20	NWL	3	61.400	SUMMER	32166	3RS ET	P
9-Jun-20	NWL	2	1.500	SUMMER	32166	3RS ET	S
9-Jun-20	NWL	3	10.200	SUMMER	32166	3RS ET	S
11-Jun-20	AW	2	4.760	SUMMER	32166	3RS ET	P
11-Jun-20	WL	2	1.520	SUMMER	32166	3RS ET	P
11-Jun-20	WL	3	16.937	SUMMER	32166	3RS ET	P
11-Jun-20	WL	2	1.060	SUMMER	32166	3RS ET	S
11-Jun-20	WL	3	7.545	SUMMER	32166	3RS ET	S
16-Jun-20	AW	3	4.970	SUMMER	32166	3RS ET	P
16-Jun-20	WL	2	3.459	SUMMER	32166	3RS ET	P
16-Jun-20	WL	3	15.008	SUMMER	32166	3RS ET	P
16-Jun-20	WL	4	1.050	SUMMER	32166	3RS ET	P
16-Jun-20	WL	2	1.080	SUMMER	32166	3RS ET	S
16-Jun-20	WL	3	8.877	SUMMER	32166	3RS ET	S
17-Jun-20	NWL	2	3.700	SUMMER	32166	3RS ET	P
17-Jun-20	NWL	3	52.050	SUMMER	32166	3RS ET	P
17-Jun-20	NWL	4	7.600	SUMMER	32166	3RS ET	P
17-Jun-20	NWL	2	1.200	SUMMER	32166	3RS ET	S
17-Jun-20	NWL	3	8.000	SUMMER	32166	3RS ET	S
17-Jun-20	NWL	4	3.200	SUMMER	32166	3RS ET	S
18-Jun-20	SWL	2	5.388	SUMMER	32166	3RS ET	P
18-Jun-20	SWL	3	34.630	SUMMER	32166	3RS ET	P

DATE	AREA	BEAU	KM SEARCHED	SEASON	VESSEL	TYPE	P/S
18-Jun-20	SWL	4	12.720	SUMMER	32166	3RS ET	P
18-Jun-20	SWL	2	3.312	SUMMER	32166	3RS ET	S
18-Jun-20	SWL	3	11.120	SUMMER	32166	3RS ET	S
18-Jun-20	SWL	4	1.870	SUMMER	32166	3RS ET	S
22-Jun-20	SWL	2	9.376	SUMMER	32166	3RS ET	P
22-Jun-20	SWL	3	31.756	SUMMER	32166	3RS ET	P
22-Jun-20	SWL	4	3.650	SUMMER	32166	3RS ET	P
22-Jun-20	SWL	2	3.471	SUMMER	32166	3RS ET	S
22-Jun-20	SWL	3	10.290	SUMMER	32166	3RS ET	S
23-Jun-20	DB	3	8.470	SUMMER	32166	3RS ET	P
23-Jun-20	DB	3	4.130	SUMMER	32166	3RS ET	S
23-Jun-20	NEL	2	21.700	SUMMER	32166	3RS ET	P
23-Jun-20	NEL	3	15.280	SUMMER	32166	3RS ET	P
23-Jun-20	NEL	2	6.500	SUMMER	32166	3RS ET	S
23-Jun-20	NEL	3	3.820	SUMMER	32166	3RS ET	S
24-Jun-20	DB	3	8.690	SUMMER	32166	3RS ET	P
24-Jun-20	DB	3	4.310	SUMMER	32166	3RS ET	S
24-Jun-20	NEL	2	31.670	SUMMER	32166	3RS ET	P
24-Jun-20	NEL	3	5.950	SUMMER	32166	3RS ET	P
24-Jun-20	NEL	2	6.880	SUMMER	32166	3RS ET	S
24-Jun-20	NEL	3	3.100	SUMMER	32166	3RS ET	S
6-Jul-20	AW	3	4.900	SUMMER	32166	3RS ET	P
6-Jul-20	WL	3	14.052	SUMMER	32166	3RS ET	P
6-Jul-20	WL	4	4.029	SUMMER	32166	3RS ET	P
6-Jul-20	WL	3	5.088	SUMMER	32166	3RS ET	S
6-Jul-20	WL	4	3.731	SUMMER	32166	3RS ET	S
8-Jul-20	DB	3	8.400	SUMMER	32166	3RS ET	P
8-Jul-20	DB	4	0.260	SUMMER	32166	3RS ET	P
8-Jul-20	DB	3	4.340	SUMMER	32166	3RS ET	S
8-Jul-20	NEL	2	0.500	SUMMER	32166	3RS ET	P
8-Jul-20	NEL	3	33.650	SUMMER	32166	3RS ET	P
8-Jul-20	NEL	4	3.230	SUMMER	32166	3RS ET	P
8-Jul-20	NEL	2	2.000	SUMMER	32166	3RS ET	S
8-Jul-20	NEL	3	7.720	SUMMER	32166	3RS ET	S
9-Jul-20	DB	4	8.720	SUMMER	32166	3RS ET	P
9-Jul-20	DB	4	4.280	SUMMER	32166	3RS ET	S
9-Jul-20	NEL	2	1.300	SUMMER	32166	3RS ET	P
9-Jul-20	NEL	3	25.670	SUMMER	32166	3RS ET	P
9-Jul-20	NEL	4	9.820	SUMMER	32166	3RS ET	P
9-Jul-20	NEL	2	1.000	SUMMER	32166	3RS ET	S
9-Jul-20	NEL	3	9.910	SUMMER	32166	3RS ET	S
10-Jul-20	NWL	3	49.090	SUMMER	32166	3RS ET	P
10-Jul-20	NWL	4	14.710	SUMMER	32166	3RS ET	P
10-Jul-20	NWL	2	2.100	SUMMER	32166	3RS ET	S
10-Jul-20	NWL	3	10.000	SUMMER	32166	3RS ET	S
13-Jul-20	AW	2	0.980	SUMMER	32166	3RS ET	P
13-Jul-20	AW	3	3.950	SUMMER	32166	3RS ET	S
13-Jul-20	WL	2	7.997	SUMMER	32166	3RS ET	P
13-Jul-20	WL	3	6.388	SUMMER	32166	3RS ET	P

DATE	AREA	BEAU	KM SEARCHED	SEASON	VESSEL	TYPE	P/S
13-Jul-20	WL	2	2.175	SUMMER	32166	3RS ET	S
13-Jul-20	WL	3	5.392	SUMMER	32166	3RS ET	S
20-Jul-20	SWL	2	44.018	SUMMER	32166	3RS ET	P
20-Jul-20	SWL	3	3.890	SUMMER	32166	3RS ET	P
20-Jul-20	SWL	2	12.803	SUMMER	32166	3RS ET	S
20-Jul-20	SWL	3	1.000	SUMMER	32166	3RS ET	S
21-Jul-20	SWL	1	8.130	SUMMER	32166	3RS ET	P
21-Jul-20	SWL	2	26.735	SUMMER	32166	3RS ET	P
21-Jul-20	SWL	3	15.310	SUMMER	32166	3RS ET	P
21-Jul-20	SWL	1	1.034	SUMMER	32166	3RS ET	S
21-Jul-20	SWL	2	12.790	SUMMER	32166	3RS ET	S
21-Jul-20	SWL	3	0.920	SUMMER	32166	3RS ET	S
22-Jul-20	NWL	1	14.280	SUMMER	32166	3RS ET	P
22-Jul-20	NWL	2	35.930	SUMMER	32166	3RS ET	P
22-Jul-20	NWL	3	12.500	SUMMER	32166	3RS ET	P
22-Jul-20	NWL	1	1.300	SUMMER	32166	3RS ET	S
22-Jul-20	NWL	2	9.190	SUMMER	32166	3RS ET	S
22-Jul-20	NWL	3	1.100	SUMMER	32166	3RS ET	S
7-Aug-20	AW	2	4.830	SUMMER	32166	3RS ET	P
7-Aug-20	WL	2	11.333	SUMMER	32166	3RS ET	P
7-Aug-20	WL	3	8.330	SUMMER	32166	3RS ET	P
7-Aug-20	WL	2	2.260	SUMMER	32166	3RS ET	S
7-Aug-20	WL	3	4.810	SUMMER	32166	3RS ET	S
10-Aug-20	SWL	2	36.803	SUMMER	32166	3RS ET	P
10-Aug-20	SWL	3	14.500	SUMMER	32166	3RS ET	P
10-Aug-20	SWL	2	13.697	SUMMER	32166	3RS ET	S
10-Aug-20	SWL	3	3.100	SUMMER	32166	3RS ET	S
11-Aug-20	NWL	2	18.930	SUMMER	32166	3RS ET	P
11-Aug-20	NWL	3	41.090	SUMMER	32166	3RS ET	P
11-Aug-20	NWL	4	3.780	SUMMER	32166	3RS ET	P
11-Aug-20	NWL	2	5.600	SUMMER	32166	3RS ET	S
11-Aug-20	NWL	3	6.200	SUMMER	32166	3RS ET	S
12-Aug-20	DB	2	8.010	SUMMER	32166	3RS ET	P
12-Aug-20	DB	3	1.000	SUMMER	32166	3RS ET	P
12-Aug-20	DB	2	3.740	SUMMER	32166	3RS ET	S
12-Aug-20	DB	3	0.450	SUMMER	32166	3RS ET	S
12-Aug-20	NEL	2	16.500	SUMMER	32166	3RS ET	P
12-Aug-20	NEL	3	19.360	SUMMER	32166	3RS ET	P
12-Aug-20	NEL	4	1.500	SUMMER	32166	3RS ET	P
12-Aug-20	NEL	2	5.270	SUMMER	32166	3RS ET	S
12-Aug-20	NEL	3	4.770	SUMMER	32166	3RS ET	S
17-Aug-20	AW	2	1.860	SUMMER	32166	3RS ET	P
17-Aug-20	AW	3	3.020	SUMMER	32166	3RS ET	P
17-Aug-20	WL	2	0.520	SUMMER	32166	3RS ET	P
17-Aug-20	WL	3	17.310	SUMMER	32166	3RS ET	P
17-Aug-20	WL	4	1.510	SUMMER	32166	3RS ET	P
17-Aug-20	WL	2	4.080	SUMMER	32166	3RS ET	S
17-Aug-20	WL	3	4.590	SUMMER	32166	3RS ET	S
17-Aug-20	WL	4	0.717	SUMMER	32166	3RS ET	S

DATE	AREA	BEAU	KM SEARCHED	SEASON	VESSEL	TYPE	P/S
18-Aug-20	DB	2	8.790	SUMMER	32166	3RS ET	P
18-Aug-20	DB	2	4.310	SUMMER	32166	3RS ET	S
18-Aug-20	NEL	2	29.590	SUMMER	32166	3RS ET	P
18-Aug-20	NEL	3	7.650	SUMMER	32166	3RS ET	P
18-Aug-20	NEL	2	9.100	SUMMER	32166	3RS ET	S
18-Aug-20	NEL	3	0.860	SUMMER	32166	3RS ET	S
24-Aug-20	SWL	2	35.344	SUMMER	32166	3RS ET	P
24-Aug-20	SWL	3	19.010	SUMMER	32166	3RS ET	P
24-Aug-20	SWL	2	11.416	SUMMER	32166	3RS ET	S
24-Aug-20	SWL	3	4.500	SUMMER	32166	3RS ET	S
26-Aug-20	NWL	2	13.100	SUMMER	32166	3RS ET	P
26-Aug-20	NWL	3	31.500	SUMMER	32166	3RS ET	P
26-Aug-20	NWL	4	16.400	SUMMER	32166	3RS ET	P
26-Aug-20	NWL	5	2.300	SUMMER	32166	3RS ET	P
26-Aug-20	NWL	2	4.200	SUMMER	32166	3RS ET	S
26-Aug-20	NWL	3	6.300	SUMMER	32166	3RS ET	S
26-Aug-20	NWL	4	1.000	SUMMER	32166	3RS ET	S
4-Sep-20	SWL	2	25.320	AUTUMN	32166	3RS ET	P
4-Sep-20	SWL	3	29.549	AUTUMN	32166	3RS ET	P
4-Sep-20	SWL	2	8.590	AUTUMN	32166	3RS ET	S
4-Sep-20	SWL	3	6.451	AUTUMN	32166	3RS ET	S
7-Sep-20	SWL	2	25.950	AUTUMN	32166	3RS ET	P
7-Sep-20	SWL	3	28.860	AUTUMN	32166	3RS ET	P
7-Sep-20	SWL	2	12.590	AUTUMN	32166	3RS ET	S
7-Sep-20	SWL	3	3.400	AUTUMN	32166	3RS ET	S
8-Sep-20	NWL	2	41.020	AUTUMN	32166	3RS ET	P
8-Sep-20	NWL	3	21.980	AUTUMN	32166	3RS ET	P
8-Sep-20	NWL	2	7.700	AUTUMN	32166	3RS ET	S
8-Sep-20	NWL	3	4.200	AUTUMN	32166	3RS ET	S
9-Sep-20	AW	2	4.940	AUTUMN	32166	3RS ET	P
9-Sep-20	WL	1	1.240	AUTUMN	32166	3RS ET	P
9-Sep-20	WL	2	12.810	AUTUMN	32166	3RS ET	P
9-Sep-20	WL	3	5.833	AUTUMN	32166	3RS ET	P
9-Sep-20	WL	2	7.540	AUTUMN	32166	3RS ET	S
9-Sep-20	WL	3	3.077	AUTUMN	32166	3RS ET	S
14-Sep-20	NWL	1	0.600	AUTUMN	32166	3RS ET	P
14-Sep-20	NWL	2	20.910	AUTUMN	32166	3RS ET	P
14-Sep-20	NWL	3	29.290	AUTUMN	32166	3RS ET	P
14-Sep-20	NWL	4	12.600	AUTUMN	32166	3RS ET	P
14-Sep-20	NWL	2	4.100	AUTUMN	32166	3RS ET	S
14-Sep-20	NWL	3	5.700	AUTUMN	32166	3RS ET	S
14-Sep-20	NWL	4	1.900	AUTUMN	32166	3RS ET	S
15-Sep-20	AW	2	3.010	AUTUMN	32166	3RS ET	P
15-Sep-20	AW	3	1.940	AUTUMN	32166	3RS ET	P
15-Sep-20	WL	2	9.663	AUTUMN	32166	3RS ET	P
15-Sep-20	WL	3	9.010	AUTUMN	32166	3RS ET	P
15-Sep-20	WL	4	0.900	AUTUMN	32166	3RS ET	P
15-Sep-20	WL	2	5.657	AUTUMN	32166	3RS ET	S
15-Sep-20	WL	3	5.440	AUTUMN	32166	3RS ET	S

DATE	AREA	BEAU	KM SEARCHED	SEASON	VESSEL	TYPE	P/S
17-Sep-20	DB	2	1.810	AUTUMN	32166	3RS ET	P
17-Sep-20	DB	3	6.720	AUTUMN	32166	3RS ET	P
17-Sep-20	DB	2	1.060	AUTUMN	32166	3RS ET	S
17-Sep-20	DB	3	3.110	AUTUMN	32166	3RS ET	S
17-Sep-20	NEL	2	7.670	AUTUMN	32166	3RS ET	P
17-Sep-20	NEL	3	19.980	AUTUMN	32166	3RS ET	P
17-Sep-20	NEL	4	9.600	AUTUMN	32166	3RS ET	P
17-Sep-20	NEL	2	2.050	AUTUMN	32166	3RS ET	S
17-Sep-20	NEL	3	5.500	AUTUMN	32166	3RS ET	S
17-Sep-20	NEL	4	3.100	AUTUMN	32166	3RS ET	S
22-Sep-20	DB	2	8.770	AUTUMN	32166	3RS ET	P
22-Sep-20	DB	2	4.330	AUTUMN	32166	3RS ET	S
22-Sep-20	NEL	2	4.100	AUTUMN	32166	3RS ET	P
22-Sep-20	NEL	3	28.500	AUTUMN	32166	3RS ET	P
22-Sep-20	NEL	4	5.000	AUTUMN	32166	3RS ET	P
22-Sep-20	NEL	2	2.800	AUTUMN	32166	3RS ET	S
22-Sep-20	NEL	3	6.900	AUTUMN	32166	3RS ET	S
22-Sep-20	NEL	4	0.300	AUTUMN	32166	3RS ET	S
12-Oct-20	DB	2	0.630	AUTUMN	32166	3RS ET	P
12-Oct-20	DB	3	6.392	AUTUMN	32166	3RS ET	P
12-Oct-20	DB	2	2.450	AUTUMN	32166	3RS ET	S
12-Oct-20	DB	3	0.960	AUTUMN	32166	3RS ET	S
12-Oct-20	DB	4	0.958	AUTUMN	32166	3RS ET	S
12-Oct-20	NEL	2	25.180	AUTUMN	32166	3RS ET	P
12-Oct-20	NEL	3	11.540	AUTUMN	32166	3RS ET	P
12-Oct-20	NEL	2	7.680	AUTUMN	32166	3RS ET	S
12-Oct-20	NEL	3	3.000	AUTUMN	32166	3RS ET	S
14-Oct-20	DB	3	0.700	AUTUMN	32166	3RS ET	P
14-Oct-20	DB	4	7.510	AUTUMN	32166	3RS ET	P
14-Oct-20	DB	3	2.020	AUTUMN	32166	3RS ET	S
14-Oct-20	DB	4	2.370	AUTUMN	32166	3RS ET	S
14-Oct-20	NEL	2	1.400	AUTUMN	32166	3RS ET	P
14-Oct-20	NEL	3	8.600	AUTUMN	32166	3RS ET	P
14-Oct-20	NEL	4	20.650	AUTUMN	32166	3RS ET	P
14-Oct-20	NEL	5	6.550	AUTUMN	32166	3RS ET	P
14-Oct-20	NEL	3	4.100	AUTUMN	32166	3RS ET	S
14-Oct-20	NEL	4	6.000	AUTUMN	32166	3RS ET	S
16-Oct-20	NWL	2	9.200	AUTUMN	32166	3RS ET	P
16-Oct-20	NWL	3	47.000	AUTUMN	32166	3RS ET	P
16-Oct-20	NWL	4	6.800	AUTUMN	32166	3RS ET	P
16-Oct-20	NWL	2	3.100	AUTUMN	32166	3RS ET	S
16-Oct-20	NWL	3	9.200	AUTUMN	32166	3RS ET	S
19-Oct-20	AW	3	1.970	AUTUMN	32166	3RS ET	P
19-Oct-20	AW	4	3.000	AUTUMN	32166	3RS ET	P
19-Oct-20	WL	3	19.136	AUTUMN	32166	3RS ET	P
19-Oct-20	WL	4	0.760	AUTUMN	32166	3RS ET	P
19-Oct-20	WL	2	1.200	AUTUMN	32166	3RS ET	S
19-Oct-20	WL	3	9.374	AUTUMN	32166	3RS ET	S
21-Oct-20	SWL	3	21.246	AUTUMN	32166	3RS ET	P

DATE	AREA	BEAU	KM SEARCHED	SEASON	VESSEL	TYPE	P/S
21-Oct-20	SWL	4	14.620	AUTUMN	32166	3RS ET	P
21-Oct-20	SWL	5	16.990	AUTUMN	32166	3RS ET	P
21-Oct-20	SWL	3	4.817	AUTUMN	32166	3RS ET	S
21-Oct-20	SWL	4	10.860	AUTUMN	32166	3RS ET	S
21-Oct-20	SWL	5	1.000	AUTUMN	32166	3RS ET	S
27-Oct-20	AW	2	4.820	AUTUMN	32166	3RS ET	P
27-Oct-20	WL	2	5.659	AUTUMN	32166	3RS ET	P
27-Oct-20	WL	3	12.127	AUTUMN	32166	3RS ET	P
27-Oct-20	WL	2	2.431	AUTUMN	32166	3RS ET	S
27-Oct-20	WL	3	7.380	AUTUMN	32166	3RS ET	S
28-Oct-20	SWL	2	0.500	AUTUMN	32166	3RS ET	P
28-Oct-20	SWL	3	49.653	AUTUMN	32166	3RS ET	P
28-Oct-20	SWL	4	3.790	AUTUMN	32166	3RS ET	P
28-Oct-20	SWL	2	0.800	AUTUMN	32166	3RS ET	S
28-Oct-20	SWL	3	13.537	AUTUMN	32166	3RS ET	S
28-Oct-20	SWL	4	2.220	AUTUMN	32166	3RS ET	S
29-Oct-20	NWL	2	17.120	AUTUMN	32166	3RS ET	P
29-Oct-20	NWL	3	46.080	AUTUMN	32166	3RS ET	P
29-Oct-20	NWL	2	1.200	AUTUMN	32166	3RS ET	S
29-Oct-20	NWL	3	10.600	AUTUMN	32166	3RS ET	S
5-Nov-20	NWL	2	6.540	AUTUMN	32166	3RS ET	P
5-Nov-20	NWL	3	53.550	AUTUMN	32166	3RS ET	P
5-Nov-20	NWL	4	3.300	AUTUMN	32166	3RS ET	P
5-Nov-20	NWL	2	3.910	AUTUMN	32166	3RS ET	S
5-Nov-20	NWL	3	7.300	AUTUMN	32166	3RS ET	S
6-Nov-20	AW	2	4.960	AUTUMN	32166	3RS ET	P
6-Nov-20	WL	2	9.750	AUTUMN	32166	3RS ET	P
6-Nov-20	WL	3	7.819	AUTUMN	32166	3RS ET	P
6-Nov-20	WL	2	3.905	AUTUMN	32166	3RS ET	S
6-Nov-20	WL	3	3.314	AUTUMN	32166	3RS ET	S
9-Nov-20	DB	3	8.710	AUTUMN	32166	3RS ET	P
9-Nov-20	DB	2	1.090	AUTUMN	32166	3RS ET	S
9-Nov-20	DB	3	3.300	AUTUMN	32166	3RS ET	S
9-Nov-20	NEL	2	34.800	AUTUMN	32166	3RS ET	P
9-Nov-20	NEL	3	1.900	AUTUMN	32166	3RS ET	P
9-Nov-20	NEL	2	9.700	AUTUMN	32166	3RS ET	S
9-Nov-20	NEL	3	0.900	AUTUMN	32166	3RS ET	S
10-Nov-20	DB	2	0.700	AUTUMN	32166	3RS ET	P
10-Nov-20	DB	3	7.740	AUTUMN	32166	3RS ET	P
10-Nov-20	DB	2	2.560	AUTUMN	32166	3RS ET	S
10-Nov-20	DB	3	1.050	AUTUMN	32166	3RS ET	S
10-Nov-20	DB	4	0.850	AUTUMN	32166	3RS ET	S
10-Nov-20	NEL	2	36.140	AUTUMN	32166	3RS ET	P
10-Nov-20	NEL	2	11.160	AUTUMN	32166	3RS ET	S
16-Nov-20	AW	2	2.550	AUTUMN	32166	3RS ET	P
16-Nov-20	AW	3	1.170	AUTUMN	32166	3RS ET	P
16-Nov-20	WL	2	5.427	AUTUMN	32166	3RS ET	P
16-Nov-20	WL	3	13.386	AUTUMN	32166	3RS ET	P
16-Nov-20	WL	2	3.583	AUTUMN	32166	3RS ET	S

DATE	AREA	BEAU	KM SEARCHED	SEASON	VESSEL	TYPE	P/S
16-Nov-20	WL	3	5.244	AUTUMN	32166	3RS ET	S
17-Nov-20	NWL	2	2.430	AUTUMN	32166	3RS ET	P
17-Nov-20	NWL	3	45.790	AUTUMN	32166	3RS ET	P
17-Nov-20	NWL	4	12.370	AUTUMN	32166	3RS ET	P
17-Nov-20	NWL	5	2.900	AUTUMN	32166	3RS ET	P
17-Nov-20	NWL	3	8.480	AUTUMN	32166	3RS ET	S
17-Nov-20	NWL	4	3.130	AUTUMN	32166	3RS ET	S
18-Nov-20	SWL	2	19.300	AUTUMN	32166	3RS ET	P
18-Nov-20	SWL	3	35.530	AUTUMN	32166	3RS ET	P
18-Nov-20	SWL	2	6.800	AUTUMN	32166	3RS ET	S
18-Nov-20	SWL	3	9.070	AUTUMN	32166	3RS ET	S
19-Nov-20	SWL	1	1.480	AUTUMN	32166	3RS ET	P
19-Nov-20	SWL	2	52.830	AUTUMN	32166	3RS ET	P
19-Nov-20	SWL	2	15.390	AUTUMN	32166	3RS ET	S
4-Dec-20	DB	3	0.700	WINTER	32166	3RS ET	P
4-Dec-20	DB	4	6.320	WINTER	32166	3RS ET	P
4-Dec-20	DB	5	1.700	WINTER	32166	3RS ET	P
4-Dec-20	DB	3	1.030	WINTER	32166	3RS ET	S
4-Dec-20	DB	4	2.440	WINTER	32166	3RS ET	S
4-Dec-20	DB	5	0.810	WINTER	32166	3RS ET	S
4-Dec-20	NEL	2	1.000	WINTER	32166	3RS ET	P
4-Dec-20	NEL	3	30.450	WINTER	32166	3RS ET	P
4-Dec-20	NEL	4	6.100	WINTER	32166	3RS ET	P
4-Dec-20	NEL	2	1.000	WINTER	32166	3RS ET	S
4-Dec-20	NEL	3	8.450	WINTER	32166	3RS ET	S
9-Dec-20	SWL	2	22.072	WINTER	32166	3RS ET	P
9-Dec-20	SWL	3	32.643	WINTER	32166	3RS ET	P
9-Dec-20	SWL	2	8.280	WINTER	32166	3RS ET	S
9-Dec-20	SWL	3	6.717	WINTER	32166	3RS ET	S
10-Dec-20	SWL	2	40.788	WINTER	32166	3RS ET	P
10-Dec-20	SWL	3	11.922	WINTER	32166	3RS ET	P
10-Dec-20	SWL	2	13.112	WINTER	32166	3RS ET	S
10-Dec-20	SWL	3	2.693	WINTER	32166	3RS ET	S
11-Dec-20	AW	1	4.850	WINTER	32166	3RS ET	P
11-Dec-20	WL	1	4.680	WINTER	32166	3RS ET	P
11-Dec-20	WL	2	10.655	WINTER	32166	3RS ET	P
11-Dec-20	WL	3	4.566	WINTER	32166	3RS ET	P
11-Dec-20	WL	1	1.310	WINTER	32166	3RS ET	S
11-Dec-20	WL	2	6.879	WINTER	32166	3RS ET	S
11-Dec-20	WL	3	2.210	WINTER	32166	3RS ET	S
15-Dec-20	DB	3	8.840	WINTER	32166	3RS ET	P
15-Dec-20	DB	3	3.960	WINTER	32166	3RS ET	S
15-Dec-20	NEL	2	8.700	WINTER	32166	3RS ET	P
15-Dec-20	NEL	3	28.460	WINTER	32166	3RS ET	P
15-Dec-20	NEL	2	3.900	WINTER	32166	3RS ET	S
15-Dec-20	NEL	3	5.940	WINTER	32166	3RS ET	S
16-Dec-20	AW	3	4.550	WINTER	32166	3RS ET	P
16-Dec-20	WL	3	13.920	WINTER	32166	3RS ET	P
16-Dec-20	WL	4	2.060	WINTER	32166	3RS ET	P

DATE	AREA	BEAU	KM SEARCHED	SEASON	VESSEL	TYPE	P/S
16-Dec-20	WL	5	0.400	WINTER	32166	3RS ET	P
16-Dec-20	WL	3	11.710	WINTER	32166	3RS ET	S
16-Dec-20	WL	4	1.180	WINTER	32166	3RS ET	S
18-Dec-20	NWL	2	3.100	WINTER	32166	3RS ET	P
18-Dec-20	NWL	3	39.720	WINTER	32166	3RS ET	P
18-Dec-20	NWL	4	19.680	WINTER	32166	3RS ET	P
18-Dec-20	NWL	2	0.200	WINTER	32166	3RS ET	S
18-Dec-20	NWL	3	10.900	WINTER	32166	3RS ET	S
18-Dec-20	NWL	4	1.600	WINTER	32166	3RS ET	S
21-Dec-20	NWL	3	23.100	WINTER	32166	3RS ET	P
21-Dec-20	NWL	4	40.400	WINTER	32166	3RS ET	P
21-Dec-20	NWL	2	1.000	WINTER	32166	3RS ET	S
21-Dec-20	NWL	3	6.200	WINTER	32166	3RS ET	S
21-Dec-20	NWL	4	4.300	WINTER	32166	3RS ET	S

CWD Small Vessel Line-transect Survey

Sighting Data

DATE	STG #	TIME	CWD/FP	GP SZ	AREA	BEAU	PSD	EFFORT	TYPE	DEC LAT	DEC LON	SEASON	BOAT ASSOC.	P/S
7-Jan-20	1	1033	FP	1	SWL	2	N/A	OFF	3RS ET	22.2218	113.9359	WINTER	NONE	P
7-Jan-20	2	1123	CWD	2	SWL	2	849	ON	3RS ET	22.1646	113.9274	WINTER	NONE	P
7-Jan-20	3	1501	CWD	7	SWL	2	715	ON	3RS ET	22.1943	113.8589	WINTER	NONE	P
7-Jan-20	4	1543	CWD	2	SWL	2	26	ON	3RS ET	22.1879	113.8490	WINTER	NONE	P
10-Jan-20	1	1023	CWD	5	WL	2	16	ON	3RS ET	22.2756	113.8503	WINTER	NONE	S
10-Jan-20	2	1052	CWD	3	WL	2	140	ON	3RS ET	22.2643	113.8572	WINTER	NONE	S
10-Jan-20	3	1153	CWD	8	WL	2	579	ON	3RS ET	22.2347	113.8242	WINTER	NONE	S
15-Jan-20	1	1041	CWD	7	WL	3	304	ON	3RS ET	22.2688	113.8490	WINTER	NONE	P
15-Jan-20	2	1109	CWD	5	WL	3	456	ON	3RS ET	22.2607	113.8495	WINTER	NONE	P
15-Jan-20	3	1132	CWD	6	WL	4	12	ON	3RS ET	22.2503	113.8441	WINTER	NONE	P
15-Jan-20	4	1209	CWD	3	WL	3	1864	ON	3RS ET	22.2257	113.8374	WINTER	NONE	S
16-Jan-20	1	1339	CWD	1	NWL	2	861	ON	3RS ET	22.3359	113.9111	WINTER	NONE	S
22-Jan-20	1	1101	FP	1	SWL	2	69	ON	3RS ET	22.1433	113.9273	WINTER	NONE	S
22-Jan-20	2	1115	FP	2	SWL	2	149	ON	3RS ET	22.1671	113.9278	WINTER	NONE	P
22-Jan-20	3	1159	FP	6	SWL	2	39	ON	3RS ET	22.1591	113.9176	WINTER	NONE	P
22-Jan-20	4	1319	FP	1	SWL	2	35	ON	3RS ET	22.1582	113.8978	WINTER	NONE	P
22-Jan-20	5	1517	CWD	2	SWL	2	362	ON	3RS ET	22.1881	113.8492	WINTER	NONE	P
22-Jan-20	6	1531	CWD	2	SWL	2	82	ON	3RS ET	22.1898	113.8490	WINTER	NONE	P
10-Feb-20	1	0953	CWD	5	NWL	2	31	ON	3RS ET	22.3704	113.8700	WINTER	NONE	P
12-Feb-20	1	0936	CWD	6	AW	2	11	ON	3RS ET	22.3032	113.8723	WINTER	NONE	P
12-Feb-20	2	1103	CWD	2	WL	2	22	ON	3RS ET	22.2688	113.8576	WINTER	NONE	P
12-Feb-20	3	1129	CWD	1	WL	2	365	ON	3RS ET	22.2554	113.8358	WINTER	NONE	S
12-Feb-20	4	1143	CWD	1	WL	2	80	ON	3RS ET	22.2502	113.8347	WINTER	NONE	P
12-Feb-20	5	1231	CWD	1	WL	2	317	ON	3RS ET	22.2232	113.8359	WINTER	NONE	P
12-Feb-20	6	1249	CWD	1	WL	2	38	ON	3RS ET	22.2229	113.8313	WINTER	NONE	P
12-Feb-20	7	1304	CWD	3	WL	2	43	ON	3RS ET	22.2145	113.8270	WINTER	NONE	P
20-Feb-20	1	1048	CWD	2	WL	2	45	ON	3RS ET	22.2599	113.8494	WINTER	NONE	P
20-Feb-20	2	1054	CWD	2	WL	2	175	ON	3RS ET	22.2611	113.8428	WINTER	NONE	P
20-Feb-20	3	1148	CWD	6	WL	2	305	ON	3RS ET	22.2235	113.8328	WINTER	NONE	P
20-Feb-20	4	1238	CWD	3	WL	2	282	ON	3RS ET	22.2005	113.8254	WINTER	NONE	S
26-Feb-20	1	1049	FP	2	SWL	2	294	ON	3RS ET	22.1800	113.9361	WINTER	NONE	P

DATE	STG #	TIME	CWD/FP	GP SZ	AREA	BEAU	PSD	EFFORT	TYPE	DEC LAT	DEC LON	SEASON	BOAT ASSOC.	P/S
26-Feb-20	2	1058	FP	1	SWL	2	69	ON	3RS ET	22.1669	113.9362	WINTER	NONE	P
26-Feb-20	3	1102	FP	2	SWL	2	604	ON	3RS ET	22.1632	113.9361	WINTER	NONE	P
26-Feb-20	4	1110	FP	2	SWL	2	1	ON	3RS ET	22.1489	113.9347	WINTER	NONE	S
26-Feb-20	5	1113	FP	2	SWL	2	11	ON	3RS ET	22.1473	113.9332	WINTER	NONE	S
26-Feb-20	6	1118	FP	1	SWL	2	246	ON	3RS ET	22.1437	113.9283	WINTER	NONE	S
26-Feb-20	7	1122	FP	3	SWL	2	89	ON	3RS ET	22.1484	113.9275	WINTER	NONE	S
26-Feb-20	8	1149	FP	2	SWL	2	179	ON	3RS ET	22.2012	113.9271	WINTER	NONE	P
26-Feb-20	9	1222	FP	1	SWL	2	137	ON	3RS ET	22.1533	113.9178	WINTER	NONE	P
26-Feb-20	10	1226	FP	1	SWL	2	124	ON	3RS ET	22.1489	113.9177	WINTER	NONE	P
26-Feb-20	11	1229	FP	1	SWL	2	32	ON	3RS ET	22.1468	113.9181	WINTER	NONE	P
26-Feb-20	12	1242	FP	1	SWL	3	293	ON	3RS ET	22.1493	113.9085	WINTER	NONE	P
26-Feb-20	13	1249	FP	1	SWL	2	3	ON	3RS ET	22.1549	113.9062	WINTER	NONE	S
26-Feb-20	14	1352	FP	1	SWL	2	171	ON	3RS ET	22.1555	113.8976	WINTER	NONE	P
26-Feb-20	15	1544	CWD	2	SWL	2	745	ON	3RS ET	22.1784	113.8498	WINTER	NONE	P
11-Mar-20	1	0938	CWD	8	NWL	2	712	ON	3RS ET	22.4130	113.8701	SPRING	NONE	P
11-Mar-20	2	1055	CWD	2	NWL	3	118	ON	3RS ET	22.2980	113.8701	SPRING	NONE	P
12-Mar-20	1	1030	CWD	4	WL	4	N/A	OFF	3RS ET	22.2778	113.8565	SPRING	NONE	P
12-Mar-20	2	1046	CWD	1	WL	5	36	ON	3RS ET	22.2693	113.8518	SPRING	NONE	P
12-Mar-20	3	1056	CWD	1	WL	3	192	ON	3RS ET	22.2635	113.8568	SPRING	NONE	S
12-Mar-20	4	1108	CWD	4	WL	3	440	ON	3RS ET	22.2611	113.8489	SPRING	NONE	P
12-Mar-20	5	1136	CWD	2	WL	3	751	ON	3RS ET	22.2482	113.8517	SPRING	NONE	S
18-Mar-20	1	1052	CWD	1	WL	3	102	ON	3RS ET	22.2605	113.8500	SPRING	NONE	P
18-Mar-20	2	1201	CWD	5	WL	2	147	ON	3RS ET	22.2324	113.8236	SPRING	NONE	S
18-Mar-20	3	1246	CWD	2	WL	3	29	ON	3RS ET	22.2130	113.8365	SPRING	NONE	S
19-Mar-20	1	1035	FP	3	SWL	1	38	ON	3RS ET	22.2111	113.9360	SPRING	NONE	P
19-Mar-20	2	1042	FP	1	SWL	2	79	ON	3RS ET	22.1984	113.9363	SPRING	NONE	P
19-Mar-20	3	1046	FP	2	SWL	2	230	ON	3RS ET	22.1951	113.9362	SPRING	NONE	P
19-Mar-20	4	1050	FP	11	SWL	2	162	ON	3RS ET	22.1909	113.9357	SPRING	NONE	P
19-Mar-20	5	1106	FP	2	SWL	2	8	ON	3RS ET	22.1708	113.9359	SPRING	NONE	P
19-Mar-20	6	1216	FP	2	SWL	2	352	ON	3RS ET	22.1552	113.9177	SPRING	NONE	P
19-Mar-20	7	1221	FP	1	SWL	2	62	ON	3RS ET	22.1487	113.9176	SPRING	NONE	P
19-Mar-20	8	1259	FP	3	SWL	2	452	ON	3RS ET	22.1924	113.9078	SPRING	NONE	P
19-Mar-20	9	1408	FP	2	SWL	2	146	ON	3RS ET	22.1909	113.8878	SPRING	NONE	P

DATE	STG #	TIME	CWD/FP	GP SZ	AREA	BEAU	PSD	EFFORT	TYPE	DEC LAT	DEC LON	SEASON	BOAT ASSOC.	P/S
23-Mar-20	1	1047	FP	3	SWL	2	128	ON	3RS ET	22.1813	113.9359	SPRING	NONE	P
23-Mar-20	2	1050	FP	6	SWL	2	37	ON	3RS ET	22.1788	113.9358	SPRING	NONE	P
23-Mar-20	3	1056	FP	1	SWL	2	179	ON	3RS ET	22.1704	113.9365	SPRING	NONE	P
23-Mar-20	4	1101	FP	1	SWL	2	228	ON	3RS ET	22.1633	113.9357	SPRING	NONE	P
23-Mar-20	5	1118	FP	2	SWL	2	36	ON	3RS ET	22.1532	113.9275	SPRING	NONE	P
23-Mar-20	6	1127	FP	1	SWL	2	267	ON	3RS ET	22.1710	113.9278	SPRING	NONE	P
23-Mar-20	7	1207	FP	4	SWL	2	139	ON	3RS ET	22.1632	113.9183	SPRING	NONE	P
23-Mar-20	8	1224	FP	4	SWL	2	245	ON	3RS ET	22.1449	113.9080	SPRING	NONE	P
23-Mar-20	9	1231	FP	2	SWL	2	165	ON	3RS ET	22.1549	113.9047	SPRING	NONE	S
23-Mar-20	10	1332	FP	5	SWL	2	424	ON	3RS ET	22.1535	113.8977	SPRING	NONE	P
23-Mar-20	11	1338	FP	1	SWL	2	237	ON	3RS ET	22.1488	113.8931	SPRING	NONE	S
23-Mar-20	12	1346	FP	1	SWL	2	3	ON	3RS ET	22.1578	113.8879	SPRING	NONE	P
23-Mar-20	13	1355	FP	2	SWL	2	431	ON	3RS ET	22.1743	113.8880	SPRING	NONE	P
23-Mar-20	14	1359	FP	1	SWL	2	274	ON	3RS ET	22.1816	113.8878	SPRING	NONE	P
23-Mar-20	15	1426	FP	1	SWL	2	572	ON	3RS ET	22.1932	113.8780	SPRING	NONE	P
23-Mar-20	16	1455	FP	4	SWL	2	351	ON	3RS ET	22.1597	113.8721	SPRING	NONE	S
23-Mar-20	17	1519	CWD	4	SWL	2	535	ON	3RS ET	22.1996	113.8618	SPRING	NONE	P
23-Mar-20	18	1607	CWD	3	SWL	2	299	ON	3RS ET	22.1951	113.8503	SPRING	NONE	P
9-Apr-20	1	1031	CWD	7	WL	2	264	ON	3RS ET	22.2687	113.8500	SPRING	PURSE SEINER	P
9-Apr-20	2	1053	CWD	2	WL	2	73	ON	3RS ET	22.2636	113.8569	SPRING	NONE	S
9-Apr-20	3	1124	CWD	4	WL	2	58	ON	3RS ET	22.2501	113.8420	SPRING	NONE	P
9-Apr-20	4	1156	CWD	1	WL	3	7	ON	3RS ET	22.2325	113.8378	SPRING	NONE	P
9-Apr-20	5	1226	CWD	1	WL	3	129	ON	3RS ET	22.2146	113.8305	SPRING	NONE	P
9-Apr-20	6	1246	CWD	14	WL	3	148	ON	3RS ET	22.2056	113.8254	SPRING	PAIR TRAWLER	P
15-Apr-20	1	1047	CWD	1	WL	2	240	ON	3RS ET	22.2505	113.8392	SPRING	NONE	P
16-Apr-20	1	1023	FP	1	SWL	2	43	ON	3RS ET	22.2087	113.9356	SPRING	NONE	P
16-Apr-20	2	1032	FP	2	SWL	2	187	ON	3RS ET	22.1955	113.9360	SPRING	NONE	P
16-Apr-20	3	1036	FP	1	SWL	2	341	ON	3RS ET	22.1888	113.9363	SPRING	NONE	P
16-Apr-20	4	1038	FP	2	SWL	2	22	ON	3RS ET	22.1864	113.9363	SPRING	NONE	P
16-Apr-20	5	1042	FP	2	SWL	2	199	ON	3RS ET	22.1832	113.9363	SPRING	NONE	P
16-Apr-20	6	1054	FP	3	SWL	2	257	ON	3RS ET	22.1604	113.9361	SPRING	NONE	P
16-Apr-20	7	1112	FP	3	SWL	2	4	ON	3RS ET	22.1582	113.9274	SPRING	NONE	P
16-Apr-20	8	1116	FP	5	SWL	2	1108	ON	3RS ET	22.1626	113.9276	SPRING	NONE	P

DATE	STG #	TIME	CWD/FP	GP SZ	AREA	BEAU	PSD	EFFORT	TYPE	DEC LAT	DEC LON	SEASON	BOAT ASSOC.	P/S
16-Apr-20	9	1121	FP	2	SWL	2	46	ON	3RS ET	22.1687	113.9278	SPRING	NONE	P
16-Apr-20	10	1131	FP	2	SWL	2	444	ON	3RS ET	22.1871	113.9276	SPRING	NONE	P
16-Apr-20	11	1135	FP	1	SWL	2	6	ON	3RS ET	22.1909	113.9275	SPRING	NONE	P
16-Apr-20	12	1209	FP	4	SWL	2	99	ON	3RS ET	22.1597	113.9176	SPRING	NONE	P
16-Apr-20	13	1215	FP	1	SWL	2	46	ON	3RS ET	22.1494	113.9177	SPRING	NONE	P
16-Apr-20	14	1228	FP	2	SWL	2	146	ON	3RS ET	22.1460	113.9083	SPRING	NONE	P
16-Apr-20	15	1233	FP	1	SWL	2	70	ON	3RS ET	22.1511	113.9083	SPRING	NONE	P
16-Apr-20	16	1335	FP	3	SWL	2	18	ON	3RS ET	22.1562	113.8980	SPRING	NONE	P
16-Apr-20	17	1338	FP	4	SWL	2	251	ON	3RS ET	22.1523	113.8974	SPRING	NONE	P
17-Apr-20	1	1304	FP	3	SWL	2	70	ON	3RS ET	22.1701	113.8964	SPRING	NONE	P
17-Apr-20	2	1311	FP	1	SWL	2	747	ON	3RS ET	22.1594	113.8973	SPRING	NONE	P
17-Apr-20	3	1327	FP	1	SWL	3	68	ON	3RS ET	22.1608	113.8872	SPRING	NONE	P
7-May-20	1	1032	CWD	1	WL	3	177	ON	3RS ET	22.2692	113.8499	SPRING	NONE	P
7-May-20	2	1115	CWD	1	WL	3	19	ON	3RS ET	22.2409	113.8395	SPRING	NONE	P
7-May-20	3	1121	CWD	15	WL	3	257	ON	3RS ET	22.2411	113.8362	SPRING	NONE	P
11-May-20	1	1052	FP	1	SWL	2	421	ON	3RS ET	22.1620	113.9362	SPRING	NONE	P
11-May-20	2	1055	FP	4	SWL	2	22	ON	3RS ET	22.1606	113.9360	SPRING	NONE	P
11-May-20	3	1058	FP	2	SWL	2	181	ON	3RS ET	22.1554	113.9361	SPRING	NONE	P
11-May-20	4	1513	CWD	13	SWL	2	191	ON	3RS ET	22.1850	113.8500	SPRING	NONE	P
12-May-20	1	1051	FP	4	SWL	2	14	ON	3RS ET	22.1543	113.9363	SPRING	NONE	P
12-May-20	2	1057	FP	3	SWL	2	120	ON	3RS ET	22.1474	113.9330	SPRING	NONE	S
12-May-20	3	1101	FP	2	SWL	2	188	ON	3RS ET	22.1451	113.9301	SPRING	NONE	S
12-May-20	4	1215	FP	2	SWL	2	17	ON	3RS ET	22.1550	113.9057	SPRING	NONE	S
12-May-20	5	1441	CWD	5	SWL	2	170	ON	3RS ET	22.1954	113.8685	SPRING	NONE	P
12-May-20	6	1546	CWD	1	SWL	3	279	ON	3RS ET	22.1946	113.8500	SPRING	NONE	P
13-May-20	1	1056	CWD	6	WL	2	331	ON	3RS ET	22.2447	113.8495	SPRING	NONE	S
13-May-20	2	1127	CWD	1	WL	2	179	ON	3RS ET	22.2416	113.8370	SPRING	NONE	P
13-May-20	3	1140	CWD	16	WL	3	78	ON	3RS ET	22.2414	113.8286	SPRING	PURSE SEINER	P
13-May-20	4	1231	CWD	1	WL	4	60	ON	3RS ET	22.2149	113.8309	SPRING	NONE	P
11-Jun-20	1	1028	CWD	2	WL	3	396	ON	3RS ET	22.2636	113.8574	SUMMER	NONE	S
11-Jun-20	2	1050	CWD	3	WL	3	6	ON	3RS ET	22.2552	113.8359	SUMMER	NONE	S
11-Jun-20	3	1121	CWD	5	WL	3	323	ON	3RS ET	22.2408	113.8315	SUMMER	NONE	P
11-Jun-20	4	1213	CWD	5	WL	3	689	ON	3RS ET	22.2140	113.8257	SUMMER	NONE	P

DATE	STG #	TIME	CWD/FP	GP SZ	AREA	BEAU	PSD	EFFORT	TYPE	DEC LAT	DEC LON	SEASON	BOAT ASSOC.	P/S
11-Jun-20	5	1243	CWD	7	WL	3	1028	ON	3RS ET	22.2055	113.8330	SUMMER	NONE	P
11-Jun-20	6	1311	CWD	3	WL	3	86	ON	3RS ET	22.1958	113.8329	SUMMER	NONE	P
11-Jun-20	7	1325	CWD	6	WL	3	70	ON	3RS ET	22.1958	113.8408	SUMMER	NONE	P
16-Jun-20	1	1041	CWD	1	WL	2	75	ON	3RS ET	22.2609	113.8522	SUMMER	NONE	P
16-Jun-20	2	1055	CWD	6	WL	3	124	ON	3RS ET	22.2607	113.8495	SUMMER	NONE	P
16-Jun-20	3	1244	CWD	1	WL	3	112	ON	3RS ET	22.2049	113.8345	SUMMER	NONE	P
16-Jun-20	4	1310	CWD	3	WL	2	65	ON	3RS ET	22.2532	113.8336	SUMMER	NONE	P
16-Jun-20	5	1345	CWD	8	WL	2	203	ON	3RS ET	22.1945	113.8423	SUMMER	NONE	S
18-Jun-20	1	1248	CWD	5	SWL	2	118	ON	3RS ET	22.1970	113.9082	SUMMER	NONE	P
18-Jun-20	2	1321	CWD	6	SWL	3	85	ON	3RS ET	22.1937	113.8972	SUMMER	GILLNETTER	P
18-Jun-20	3	1550	CWD	2	SWL	3	46	ON	3RS ET	22.1852	113.8492	SUMMER	NONE	P
22-Jun-20	1	1144	CWD	4	SWL	2	807	ON	3RS ET	22.1939	113.9179	SUMMER	NONE	P
22-Jun-20	2	1256	CWD	4	SWL	3	178	ON	3RS ET	22.1881	113.9054	SUMMER	NONE	S
22-Jun-20	3	1321	CWD	3	SWL	2	898	ON	3RS ET	22.2123	113.8979	SUMMER	NONE	P
22-Jun-20	4	1344	CWD	4	SWL	2	386	ON	3RS ET	22.1934	113.8979	SUMMER	NONE	P
22-Jun-20	5	1432	CWD	1	SWL	3	520	ON	3RS ET	22.1688	113.8879	SUMMER	NONE	P
22-Jun-20	6	1453	CWD	5	SWL	3	305	ON	3RS ET	22.1898	113.8883	SUMMER	NONE	P
22-Jun-20	7	1548	CWD	1	SWL	3	225	ON	3RS ET	22.1795	113.8686	SUMMER	NONE	P
22-Jun-20	8	1607	CWD	1	SWL	2	67	ON	3RS ET	22.1904	113.8593	SUMMER	NONE	P
22-Jun-20	9	1614	CWD	2	SWL	2	36	ON	3RS ET	22.1824	113.8596	SUMMER	NONE	P
6-Jul-20	1	1037	CWD	1	WL	3	326	ON	3RS ET	22.2643	113.8574	SUMMER	NONE	S
6-Jul-20	2	1111	CWD	11	WL	4	634	ON	3RS ET	22.2468	113.8514	SUMMER	NONE	S
6-Jul-20	3	1216	CWD	1	WL	3	284	ON	3RS ET	22.2120	113.8363	SUMMER	NONE	P
6-Jul-20	4	1245	CWD	2	WL	3	329	ON	3RS ET	22.1961	113.8400	SUMMER	NONE	P
13-Jul-20	1	1033	CWD	5	WL	2	1238	ON	3RS ET	22.2672	113.8600	SUMMER	NONE	S
13-Jul-20	2	1126	CWD	4	WL	3	601	ON	3RS ET	22.2416	113.8299	SUMMER	NONE	P
13-Jul-20	3	1144	CWD	5	WL	3	1020	ON	3RS ET	22.2377	113.8266	SUMMER	NONE	S
13-Jul-20	4	1203	CWD	1	WL	3	13	ON	3RS ET	22.2235	113.8242	SUMMER	NONE	P
13-Jul-20	5	1223	CWD	4	WL	3	322	ON	3RS ET	22.2142	113.8266	SUMMER	NONE	P
13-Jul-20	6	1304	CWD	18	WL	3	211	ON	3RS ET	22.2020	113.8240	SUMMER	NONE	S
13-Jul-20	7	1338	CWD	19	WL	3	221	ON	3RS ET	22.1962	113.8332	SUMMER	NONE	P
13-Jul-20	8	1410	CWD	4	WL	3	129	ON	3RS ET	22.1910	113.8419	SUMMER	NONE	S
20-Jul-20	1	1028	CWD	1	SWL	2	171	ON	3RS ET	22.2119	113.9359	SUMMER	NONE	P

DATE	STG #	TIME	CWD/FP	GP SZ	AREA	BEAU	PSD	EFFORT	TYPE	DEC LAT	DEC LON	SEASON	BOAT ASSOC.	P/S
20-Jul-20	2	1237	CWD	1	SWL	2	268	ON	3RS ET	22.1767	113.9072	SUMMER	NONE	S
20-Jul-20	3	1249	CWD	4	SWL	2	362	ON	3RS ET	22.1845	113.9046	SUMMER	NONE	S
20-Jul-20	4	1407	CWD	9	SWL	3	255	ON	3RS ET	22.1673	113.8883	SUMMER	NONE	P
20-Jul-20	5	1424	CWD	5	SWL	2	243	ON	3RS ET	22.1776	113.8883	SUMMER	NONE	P
20-Jul-20	6	1510	CWD	1	SWL	2	130	ON	3RS ET	22.1765	113.8784	SUMMER	NONE	P
20-Jul-20	7	1532	CWD	5	SWL	3	247	ON	3RS ET	22.1682	113.8685	SUMMER	NONE	P
20-Jul-20	8	1604	CWD	3	SWL	2	51	ON	3RS ET	22.1962	113.8586	SUMMER	NONE	P
20-Jul-20	9	1640	CWD	2	SWL	2	42	ON	3RS ET	22.1921	113.8494	SUMMER	NONE	P
21-Jul-20	1	1054	FP	7	SWL	1	146	ON	3RS ET	22.1486	113.9340	SUMMER	NONE	S
21-Jul-20	2	1255	CWD	3	SWL	3	46	ON	3RS ET	22.1928	113.8977	SUMMER	NONE	P
21-Jul-20	3	1410	CWD	2	SWL	2	161	ON	3RS ET	22.1915	113.8790	SUMMER	NONE	P
21-Jul-20	4	1426	CWD	3	SWL	2	241	ON	3RS ET	22.1723	113.8788	SUMMER	NONE	P
21-Jul-20	5	1511	CWD	4	SWL	2	21	ON	3RS ET	22.1962	113.8587	SUMMER	NONE	P
21-Jul-20	6	1537	CWD	1	SWL	2	524	ON	3RS ET	22.1700	113.8560	SUMMER	NONE	S
21-Jul-20	7	1551	CWD	3	SWL	3	188	ON	3RS ET	22.1862	113.8493	SUMMER	PURSE SEINER	P
22-Jul-20	1	1202	CWD	2	NWL	2	308	ON	3RS ET	22.3963	113.8876	SUMMER	NONE	P
7-Aug-20	1	1006	CWD	1	WL	2	57	ON	3RS ET	22.2972	113.8611	SUMMER	NONE	P
7-Aug-20	2	1033	CWD	2	WL	2	96	ON	3RS ET	22.2768	113.8514	SUMMER	NONE	S
7-Aug-20	3	1158	CWD	3	WL	3	8	ON	3RS ET	22.2174	113.8200	SUMMER	NONE	S
7-Aug-20	4	1228	CWD	13	WL	3	111	ON	3RS ET	22.2140	113.8303	SUMMER	NONE	P
7-Aug-20	5	1337	CWD	1	WL	3	235	ON	3RS ET	22.1955	113.8396	SUMMER	NONE	P
10-Aug-20	1	1122	FP	4	SWL	2	59	ON	3RS ET	22.1802	113.9280	SUMMER	NONE	P
10-Aug-20	2	1515	CWD	2	SWL	3	3	ON	3RS ET	22.1883	113.8491	SUMMER	NONE	P
10-Aug-20	3	1528	CWD	1	SWL	3	37	ON	3RS ET	22.1931	113.8499	SUMMER	NONE	P
17-Aug-20	1	1102	CWD	9	WL	3	229	ON	3RS ET	22.2408	113.8378	SUMMER	NONE	P
17-Aug-20	2	1222	CWD	1	WL	4	304	ON	3RS ET	22.1928	113.8424	SUMMER	NONE	S
24-Aug-20	1	1054	FP	2	SWL	2	61	ON	3RS ET	22.1462	113.9319	SUMMER	NONE	S
24-Aug-20	2	1318	FP	8	SWL	2	63	ON	3RS ET	22.1565	113.8876	SUMMER	NONE	P
4-Sep-20	1	1111	FP	3	SWL	2	93	ON	3RS ET	22.1500	113.9273	AUTUMN	NONE	P
4-Sep-20	2	1129	FP	6	SWL	2	328	ON	3RS ET	22.1869	113.9273	AUTUMN	NONE	P
4-Sep-20	3	1225	FP	1	SWL	2	47	ON	3RS ET	22.1547	113.9040	AUTUMN	NONE	S
4-Sep-20	4	1330	FP	7	SWL	3	15	ON	3RS ET	22.1493	113.8977	AUTUMN	NONE	P
9-Sep-20	1	1030	CWD	2	WL	2	189	ON	3RS ET	22.2632	113.8568	AUTUMN	NONE	S

DATE	STG #	TIME	CWD/FP	GP SZ	AREA	BEAU	PSD	EFFORT	TYPE	DEC LAT	DEC LON	SEASON	BOAT ASSOC.	P/S
9-Sep-20	2	1213	CWD	8	WL	3	323	ON	3RS ET	22.1965	113.8398	AUTUMN	NONE	P
15-Sep-20	1	1053	CWD	2	WL	2	85	ON	3RS ET	22.2689	113.8508	AUTUMN	NONE	P
15-Sep-20	2	1158	CWD	2	WL	3	20	ON	3RS ET	22.2320	113.8378	AUTUMN	NONE	P
15-Sep-20	3	1242	CWD	5	WL	3	225	ON	3RS ET	22.2058	113.8398	AUTUMN	NONE	S
12-Oct-20	1	0942	CWD	1	DB	3	274	ON	3RS ET	22.4216	113.9006	AUTUMN	NONE	P
19-Oct-20	1	1103	CWD	3	WL	3	22	ON	3RS ET	22.2419	113.8371	AUTUMN	NONE	P
19-Oct-20	2	1133	CWD	1	WL	3	10	ON	3RS ET	22.2239	113.8328	AUTUMN	NONE	P
19-Oct-20	3	1148	CWD	1	WL	3	226	ON	3RS ET	22.2181	113.8197	AUTUMN	NONE	S
21-Oct-20	1	1116	FP	1	SWL	3	404	ON	3RS ET	22.1478	113.9271	AUTUMN	NONE	P
21-Oct-20	2	1447	CWD	1	SWL	4	270	ON	3RS ET	22.1945	113.8687	AUTUMN	NONE	P
21-Oct-20	3	1527	CWD	6	SWL	3	60	ON	3RS ET	22.1836	113.8492	AUTUMN	NONE	P
21-Oct-20	4	1547	CWD	15	SWL	3	1340	ON	3RS ET	22.1944	113.8498	AUTUMN	NONE	P
27-Oct-20	1	1123	CWD	6	WL	3	104	ON	3RS ET	22.2318	113.8268	AUTUMN	NONE	P
27-Oct-20	2	1138	CWD	4	WL	3	378	ON	3RS ET	22.2320	113.8336	AUTUMN	NONE	P
27-Oct-20	3	1149	CWD	3	WL	3	92	ON	3RS ET	22.2329	113.8360	AUTUMN	NONE	P
27-Oct-20	4	1213	CWD	3	WL	3	337	ON	3RS ET	22.2142	113.8288	AUTUMN	NONE	P
27-Oct-20	5	1228	CWD	3	WL	3	387	ON	3RS ET	22.2138	113.8289	AUTUMN	NONE	P
27-Oct-20	6	1232	CWD	8	WL	3	624	ON	3RS ET	22.2138	113.8336	AUTUMN	NONE	P
27-Oct-20	7	1302	CWD	7	WL	3	147	ON	3RS ET	22.2058	113.8261	AUTUMN	NONE	P
27-Oct-20	8	1320	CWD	1	WL	3	838	ON	3RS ET	22.2027	113.8233	AUTUMN	NONE	S
27-Oct-20	9	1341	CWD	3	WL	2	693	ON	3RS ET	22.1880	113.8454	AUTUMN	NONE	S
28-Oct-20	1	1306	FP	2	SWL	3	35	ON	3RS ET	22.1577	113.8977	AUTUMN	NONE	P
5-Nov-20	1	1044	CWD	1	NWL	3	112	ON	3RS ET	22.2740	113.8757	AUTUMN	NONE	S
6-Nov-20	1	1018	CWD	5	WL	2	821	ON	3RS ET	22.2759	113.8504	AUTUMN	NONE	S
6-Nov-20	2	1341	CWD	3	WL	3	206	ON	3RS ET	22.2506	113.8463	AUTUMN	NONE	P
6-Nov-20	3	1400	CWD	4	WL	2	236	ON	3RS ET	22.2414	113.8416	AUTUMN	NONE	P
6-Nov-20	4	1429	CWD	4	WL	3	246	ON	3RS ET	22.2321	113.8358	AUTUMN	NONE	P
6-Nov-20	5	1443	CWD	5	WL	2	216	ON	3RS ET	22.2236	113.8373	AUTUMN	NONE	S
6-Nov-20	6	1513	CWD	4	WL	2	500	ON	3RS ET	22.2042	113.8219	AUTUMN	NONE	S
16-Nov-20	1	0940	CWD	2	AW	2	475	ON	3RS ET	22.2971	113.8842	AUTUMN	GILLNETTER	P
16-Nov-20	2	1040	CWD	1	WL	3	800	ON	3RS ET	22.2740	113.8482	AUTUMN	NONE	S
16-Nov-20	3	1059	CWD	4	WL	3	14	ON	3RS ET	22.2607	113.8480	AUTUMN	NONE	P
16-Nov-20	4	1210	CWD	3	WL	3	232	ON	3RS ET	22.2139	113.8226	AUTUMN	NONE	P

DATE	STG #	TIME	CWD/FP	GP SZ	AREA	BEAU	PSD	EFFORT	TYPE	DEC LAT	DEC LON	SEASON	BOAT ASSOC.	P/S
16-Nov-20	5	1249	CWD	1	WL	2	285	ON	3RS ET	22.2055	113.8336	AUTUMN	NONE	P
16-Nov-20	6	1317	CWD	3	WL	2	608	ON	3RS ET	22.1901	113.8421	AUTUMN	NONE	S
17-Nov-20	1	1034	CWD	1	NWL	4	24	ON	3RS ET	22.2723	113.8701	AUTUMN	NONE	P
19-Nov-20	1	1202	FP	2	SWL	2	62	ON	3RS ET	22.1621	113.9184	AUTUMN	NONE	P
19-Nov-20	2	1514	CWD	4	SWL	2	71	ON	3RS ET	22.1883	113.8491	AUTUMN	NONE	P
9-Dec-20	1	1117	CWD	1	SWL	2	111	ON	3RS ET	22.1828	113.9277	WINTER	NONE	P
9-Dec-20	2	1159	CWD	1	SWL	2	59	ON	3RS ET	22.1730	113.9191	WINTER	NONE	P
9-Dec-20	3	1211	CWD	1	SWL	2	21	ON	3RS ET	22.1702	113.9188	WINTER	NONE	P
9-Dec-20	4	1224	FP	2	SWL	3	22	ON	3RS ET	22.1562	113.9183	WINTER	NONE	P
9-Dec-20	5	1247	CWD	2	SWL	2	148	ON	3RS ET	22.1623	113.8987	WINTER	NONE	S
9-Dec-20	6	1351	CWD	1	SWL	3	7	ON	3RS ET	22.1487	113.8958	WINTER	NONE	S
9-Dec-20	7	1516	CWD	3	SWL	3	389	ON	3RS ET	22.2007	113.8678	WINTER	NONE	P
10-Dec-20	1	1107	FP	1	SWL	2	3	ON	3RS ET	22.1645	113.9276	WINTER	NONE	P
10-Dec-20	2	1156	FP	1	SWL	2	54	ON	3RS ET	22.1473	113.9180	WINTER	NONE	P
10-Dec-20	3	1307	FP	1	SWL	2	51	ON	3RS ET	22.1548	113.8975	WINTER	NONE	P
10-Dec-20	4	1430	CWD	2	SWL	3	53	ON	3RS ET	22.1921	113.8679	WINTER	NONE	P
10-Dec-20	5	1448	CWD	1	SWL	3	122	ON	3RS ET	22.1991	113.8600	WINTER	NONE	S
10-Dec-20	6	1459	CWD	1	SWL	3	449	ON	3RS ET	22.1951	113.8589	WINTER	NONE	P
10-Dec-20	7	1535	CWD	4	SWL	3	805	ON	3RS ET	22.1905	113.8490	WINTER	NONE	P
11-Dec-20	1	1129	CWD	1	WL	2	109	ON	3RS ET	22.2229	113.8213	WINTER	NONE	P
11-Dec-20	2	1146	CWD	2	WL	2	133	ON	3RS ET	22.2149	113.8312	WINTER	NONE	P
16-Dec-20	1	0940	CWD	2	AW	3	19	ON	3RS ET	22.2937	113.8775	WINTER	NONE	P
16-Dec-20	2	1039	CWD	4	WL	3	493	ON	3RS ET	22.2687	113.8538	WINTER	NONE	P
16-Dec-20	3	1139	CWD	1	WL	3	8	ON	3RS ET	22.2323	113.8307	WINTER	NONE	P

Abbreviations: STG# = Sighting Number; GP SZ = Dolphin Group Size; BEAU = Beaufort Sea State; PSD = Perpendicular Distance (in metres); N/A = Not Applicable; DEC LAT = Latitude (WGS84 in Decimal), DEC LON = Longitude (WGS84 in Decimal); BOAT ASSOC. = Fishing Boat Association

CWD Small Vessel Line-transect Survey

Photo Identification – Residency Pattern of Selected Dolphin Individuals

ID	Residency	2015	2016				2017				2018				2019				2020				#STG
		WI	AU	SP	SU	WI	AU	SP	SU	WI	AU	SP	SU	WI	AU	SP	SU	WI	AU	SP	SU	WI	
NLMM002	SR		2	1	3	2	1			1	1	1		2				1					15
NLMM004	SR			1	1	2		4		3	2	3		2	4	1		1				2	26
NLMM006	SR		3	2	1	4			1		2	1	2		1	2		1					20
NLMM013	SR		3	2	1	4			2		2	3	2		2	2		1			1		25
NLMM019	SR				2	2	4	2	1		1		1		3		1	2			1		20
NLMM020	SR					2	4	1	2		1	1			2			2			1		16
NLMM023	SR		1			1	2	1	1	1	2	1	1	2	1				2				16
NLMM063	YR										3	2	3	1	1	1	2	2			3		18
SLMM002	SR	1	4		1	1				1			2	1	1	2		2	1	4			21
SLMM003	YR	1		1		2			1		2	2	3	2	4	1	2	1	4	3	2	7	38
SLMM007	YR	1		1	1	2		1		2	2		1	1	2		1	2	2	2	2	3	26
SLMM010	YR	1	2	4	1	2		1	1	3			3	3	1		1	3	5	1	2	1	35
SLMM011	SV		2		4	1		3	2	1					1		1	1		2			18
SLMM012	YR	1	1	1		1	2						2	2	2		2	3	3	2	1	3	26
SLMM014	YR		1	1	3	3		2	5	4	2	3		2	1	1	1	1	1	4	4	3	42
SLMM022	SR		3	2		2		2		1				2	3	1	1		1			2	20
SLMM023	SR			1		1	1	4	2			1	1			1			3	3		2	20
SLMM028	SR		1		4			3		2	1	1	1	3	2		2			2	2		24
SLMM030	SR		2		2		2	1	1	2				3		2				2			17
SLMM031	SR				3	1	1	1	1	2		1	1		1		1		1	4		2	20
SLMM034	SR		1		2				2		1	3				3				5			17
SLMM037	YR				2	1	2	1		1	1			1	2		3		3	2	1	6	26
SLMM049	YR				1	1				3		2		1	3	1	3		2	1	4	1	23
SLMM052	YR	1	1					3	1	3	1	1	2	1	2	1	4	1	2	3	2	2	31

ID	Residency	2015	2016				2017				2018				2019				2020				#STG
		WI	AU	SP	SU	WI	AU	SP	SU	WI	AU	SP	SU	WI	AU	SP	SU	WI	AU	SP	SU	WI	
WLMM001	SR	1	1				1	2	2	3	2	3	1	5	2	1		2		1	2	4	33
WLMM004	SR	1						2	1			1	2	2	2	1	1				1	1	15
WLMM006	SR	1			1				2			1	2	2	1	1	1			2		1	15
WLMM007	YR	1	2	1		1		2		4	1	2		1	2	2		2	4	3	1	1	30
WLMM008	SR	1			1			3	3				1		1		1	1	1		2		15
WLMM009	SR	1			1				4			1	2	2		1				1	2	1	16
WLMM027	YR		5	1	3		2		3	1		2	3	2	1	1	2	1		2			29
WLMM028	YR		2	2			1		1			1	1	4				1	1	2	1	3	20
WLMM029	SR		1	2			1		1			1	2	3	2		1	1		2	1	1	19
WLMM043	SR		1		2			2	3	1	1	3	1	1	1	4	3				3		26
WLMM054	SR		3				2	1	1			1	5		4	2		1					20
WLMM056	YR		1				2			1	2	2			2	1	2	2	2	1		2	20
WLMM060	SR		1					2		2	3	1	2	1	1	1			2	1	1		18
WLMM063	SR					1			1	2	1		3	1	1	2	1				1	1	15
WLMM065	SR						4			1	2	1	2	1	2		1	1	1			1	17
WLMM071	SR							2		4	3	1	3	2	2	1			2		1	1	22
WLMM078	YR							1	2			2	2	2	2	1	2	1					15
WLMM079	YR						1	2	2		2	1	1	1	3	1	5	1	5		3	1	29
WLMM114	YR										1	2	2	1	1	1			3	4	2	3	20
WLMM131	SR										1				1	1	4		1	2	4	1	15

* Residency: YR = Year-round Resident; SR = Seasonal Resident; SV = Seasonal Visitor
 Seasons: AU = Autumn; SP = Spring; SU = Summer; WI = Winter,
 #STG = Total number of sightings

CWD Land-based Theodolite Tracking

CWD Groups by Survey Date

Date	Station	Start Time	End Time	Duration	Beaufort Range	Visibility Range	No. of Focal Follow Dolphin Groups Tracked	Group Size Range
8/Jan/20	Sha Chau	8:52	14:52	6:00	2	2-3	0	-
14/Jan/20	Lung Kwu Chau	9:20	15:20	6:00	2-3	2	3	1-3
19/Feb/20	Lung Kwu Chau	9:03	15:03	6:00	2-3	2	4	1
20/Feb/20	Sha Chau	8:50	14:50	6:00	2	2	0	-
9/Mar/20	Lung Kwu Chau	8:50	14:50	6:00	2-3	2-3	0	-
23/Mar/20	Sha Chau	10:52	16:52	6:00	2-3	2	0	-
9/Apr/20	Sha Chau	10:34	16:34	6:00	2	2	0	-
16/Apr/20	Lung Kwu Chau	9:09	15:09	6:00	2	2-3	4	1-4
27/May/20	Lung Kwu Chau	8:56	14:56	6:00	2	3	1	1
28/May/20	Sha Chau	10:45	16:45	6:00	2	3	0	-
4/Jun/20	Lung Kwu Chau	9:00	15:00	6:00	2-3	1	0	-
10/Jun/20	Sha Chau	10:45	16:45	6:00	3	1	0	-
7/Jul/20	Sha Chau	10:45	16:45	6:00	2-3	1	0	-
15/Jul/20	Lung Kwu Chau	8:54	14:54	6:00	2-3	1	0	-
17/Aug/20	Lung Kwu Chau	8:55	14:55	6:00	2-3	1-2	2	1-2
24/Aug/20	Sha Chau	10:56	16:56	6:00	2	2	0	-
3/Sep/20	Lung Kwu Chau	9:01	15:01	6:00	2	3	0	-
7/Sep/20	Sha Chau	10:37	16:37	6:00	2	2	0	-
19/Oct/20	Lung Kwu Chau	9:03	15:03	6:00	2-3	3	1	1
27/Oct/20	Sha Chau	10:52	16:52	6:00	2	2-3	0	-
4/Nov/20	Sha Chau	10:55	16:55	6:00	2-3	3	0	-

Date	Station	Start Time	End Time	Duration	Beaufort Range	Visibility Range	No. of Focal Follow Dolphin Groups Tracked	Group Size Range
16/Nov/20	Lung Kwu Chau	8:57	14:57	6:00	2-3	3	2	2-3
10/Dec/20	Sha Chau	10:52	16:52	6:00	2	3	0	-
28/Dec/20	Lung Kwu Chau	8:59	14:59	6:00	2-3	2	3	2-4

Visibility Range: 1=Excellent, 2=Good, 3=Fair, 4=Poor

Annex 1 List of References for CWD Monitoring

- Buckland, S. T., D. R. Anderson, K. P. Burnham, J. L. Laake, D. L. Borchers and L. Thomas. 2001. Introduction to Distance Sampling: Estimating Abundance of Biological Populations. Oxford University Press.
- Buckland, S. T., D. R. Anderson, K. P. Burnham, J. L. Laake, D. L. Borchers and L. Thomas. 2004. Advanced Distance Sampling. Oxford University Press.
- Buckstaff, K.C., Wells, R.S., Gannon, J.G., Nowacek, D.P. 2013. Responses of bottlenose dolphins (*Tursiops truncatus*) to construction and demolition of coastal marine structures. *Aquat. Mamm.* 39, 174-186. (doi: 10.1578/AM.39.2.2013.174)
- Castellote, M., Clark, C.W., Lammers, M.O. 2012. Acoustic and behavioral changes by fin whales (*Balaenoptera physalus*) in response to shipping and airgun noise. *Biol. Conserv.* 147, 115-122. (doi:10.1016/j.biocon.2011.12.021)
- Chen, T., Hung, S.K., Qiu, Y., Jia, X. & Jefferson, T.A. 2010. Distribution, abundance, and individual movements of Indo-Pacific humpback dolphins (*Sousa chinensis*) in the Pearl River Estuary, China. *Mammalia*, 74, 117-125.
- Finneran, J.J., Schlundt, C.E., Branstetter, B.K., Trickey, J.S., Bowman, V., Jenkins, K. 2015. Effects of multiple impulses from a seismic air gun on bottlenose dolphin hearing and behavior. *J. Acoust. Soc. Amer.* 137, 1634-1646. (doi: <http://dx.doi.org/10.1121/1.4916591>)
- Gailey, G. & Ortega-Ortiz, J.G. 2002. A note on a computer-based system for theodolite tracking of cetaceans. *Journal of Cetacean Research and Management*, 4, 213-218.
- Gailey, G., Würsig, B. & McDonald, T.L. 2007. Abundance, behavior, and movement patterns of western gray whales in relation to a 3-D seismic survey, Northeast Sakhalin Island, Russia. *Environmental Monitoring and Assessment*, 134, 75-91.
- Hastie T., Tibshirani R. 1986. Generalized additive models. *Statistical Science*:297-310.
- Hoyt, E. 2011. Marine Protected Areas for Whales, Dolphins, and Porpoises, Second Edition. Earthscan Press, London, UK. 464 pp.
- Huang, S., Karczmarski, L., Chen, J., Zhou, R., Wen, L., Zhang, H., Li, H. & Wu, Y. 2012. Demography and population trends of the largest population of Indo-Pacific humpback dolphins. *Biological Conservation*, 147:234-242.
- Hung, S.K. 2008. Habitat use of Indo-Pacific humpback dolphins (*Sousa chinensis*) in Hong Kong. Ph.D. dissertation. University of Hong Kong, Hong Kong, 266 p.
- Hung, S.K. 2016. Monitoring of Marine Mammals in Hong Kong Waters (2015 – 2016) Final Report (1 April 2015 to 31 March 2016). Agriculture, Fisheries and Conservation Department of the Hong Kong SAR Government.
- Jefferson, T.A. 2000. Population biology of the Indo-Pacific hump-backed dolphin in Hong Kong waters. *Wildlife Monographs*, 144, 65 pp.
- Jefferson, T.A. 2018. Hong Kong's Indo-Pacific humpback dolphins (*Sousa chinensis*): Assessing past and future anthropogenic impacts and working toward sustainability. *Aquatic Mammals* 44:711-728.
- Jefferson, T.A. and S. Leatherwood. 1997. Distribution and abundance of Indo-Pacific hump-backed dolphins (*Sousa chinensis* Osbeck, 1765) in Hong Kong waters. *Asian Marine Biology* 14:93-110.

Lammers, M.O., Brainard, R.E., Au, W.W.L., Mooney, T.A. & Wong, K.B. 2008. An ecological acoustic recorder (EAR) for long-term monitoring of biological and anthropogenic sounds on coral reefs and other marine habitats. *Journal of the Acoustical Society of America*, 123, 1720-1728.

Lundquist, D., Gemmell, N.J. & Würsig, B. 2012. Behavioural responses of dusky dolphin groups (*Lagenorhynchus obscurus*) to tour vessels off Kaikoura, New Zealand. *PLoS ONE*, 7, 9pp.

Lusseau, D. 2006. The short-term behavioral reactions of bottlenose dolphins to interactions with boats in Doubtful Sound, New Zealand. *Marine Mammal Science*, 22(4), 802-818.

Marques, F. F. C. and S. T. Buckland. 2003. Incorporating covariates into standard line transect analyses. *Biometrics* 59:924-935.

Marques, F. F. C. and S. T. Buckland. 2004. Covariate models for the detection function. Pages 31-47 in S. T. Buckland, D. R. Anderson, K. P. Burnham, J. L. Laake, D. L. Borchers and L. Thomas, eds. *Advanced Distance Sampling*. Oxford University Press.

Mott MacDonald. 2014. Expansion of Hong Kong International Airport into a Three-Runway System Environmental Impact Assessment Report. The Airport Authority Hong Kong, Hong Kong.

Munger, L., Lammers, M.O., Cifuentes, M., Würsig, B., Jefferson, T.A. & Hung, S.K. 2016. Indo-Pacific humpback dolphin occurrence north of Lantau Island, Hong Kong, based on year-round passive acoustic monitoring. *Journal of the Acoustical Society of America*, 140, 2754–2765.

Mott MacDonald 2014. Expansion of Hong Kong International Airport into a Three-Runway System. Environmental Impact Assessment Report. Final report to the Hong Kong SAR Government.

Mott MacDonald 2019. Chinese White Dolphin Monitoring Annual Review Report – January 2018 to December 2018. Final report to the Hong Kong SAR Government.

Nowacek, D.P., Thorne, L.H., Johnston, D.W., Tyack, P.L. 2007. Responses of cetaceans to anthropogenic noise. *Mamm. Rev.* 372, 81-115. (doi: 10.1111/j.1365-2907.2007.00104.x)

Piwetz, S., Hung, S., Wang, J., Lundquist, D. & Würsig, B. 2012. Influence of vessel traffic on movements of Indo-Pacific Humpback dolphins (*Sousa chinensis*) off Lantau Island, Hong Kong. *Aquatic Mammals*, 38, 325-331.

Quinn, G. P., & Keough, M. J. 2002. *Experimental design and data analysis for biologists*. Cambridge University Press.

Rolland, R.M., Parks, S.E., Hunt, K.E., Castellote, M., Corkeron, P.J., Nowacek, D.P., Wasser, S.K., and Kraus, S.D. 2012. Evidence that ship noise increases stress in right whales. *Proc. R. Soc. B* 279, 2363-2368. (doi: 10.1098/rspb.2011.2429)

Sims, P.Q., Vaughn, R., Hung, S.K. & Würsig, B. 2012a. Sounds of Indo-Pacific humpback dolphins (*Sousa chinensis*) in West Hong Kong: A preliminary description. *J. Acoust. Soc. Am.* 131: EL48-EL53.

Sims, P.Q., Hung, S.K. & Würsig, B. 2012b. High-speed vessel noises in West Hong Kong waters and their contributions relative to Indo-Pacific humpback dolphins (*Sousa chinensis*). *Journal of Marine Biology*, 2012, 11 pp.

Thomas, L., S. T. Buckland, E. A. Rexstad, J. L. Laake, S. Strindberg, S. L. Hedley, J. R. B. Bishop, T. A. Marques and K. P. Burnham. 2010. Distance software: design and analysis of distance sampling surveys for estimating population size. *Journal of Applied Ecology* 47:5-14.

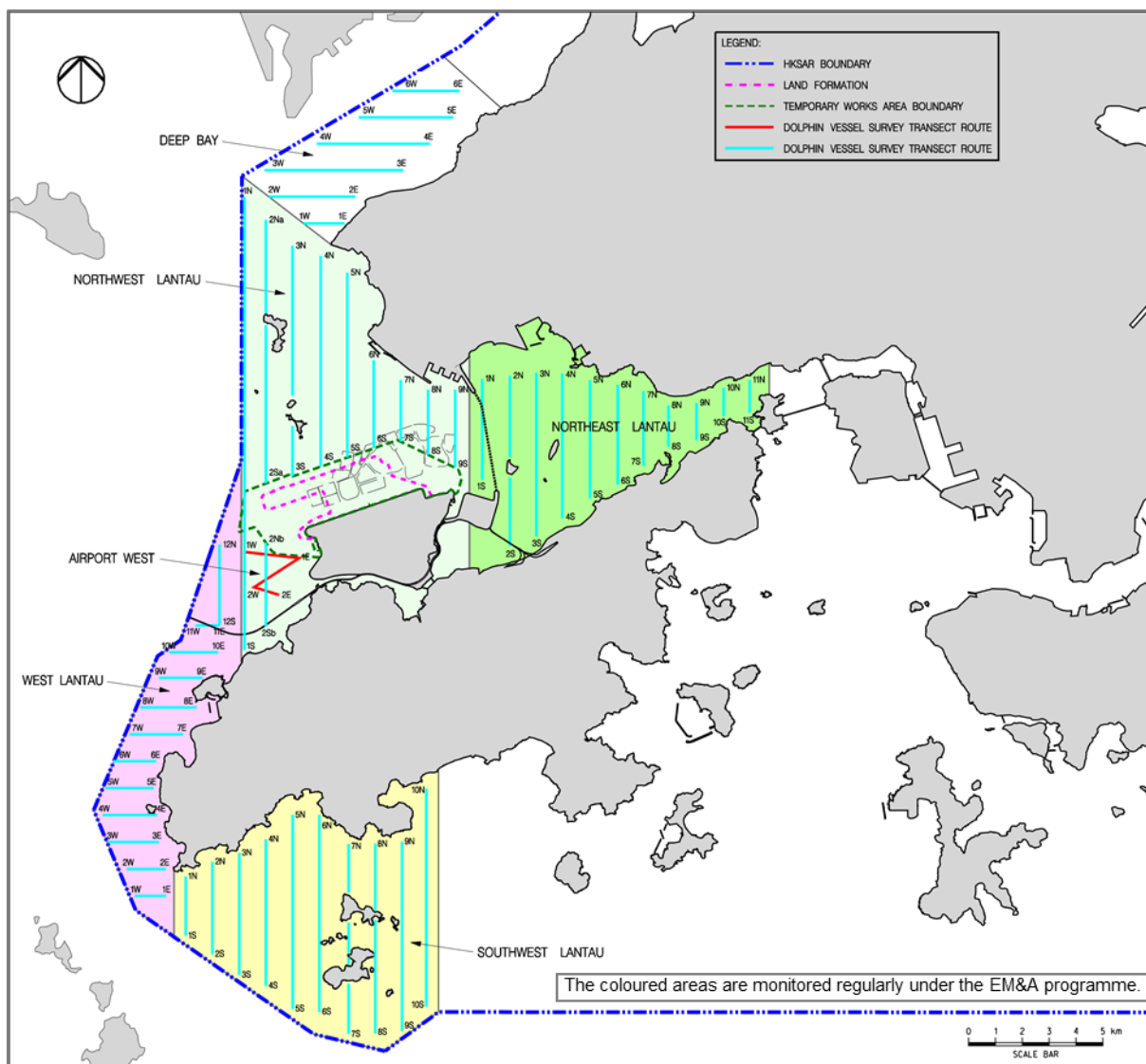
Turchin, P. 1998. *Quantitative Analysis of Movement: Measuring and modelling population redistribution in animals and plants*. Sinauer Associates, Inc., U.S.A.

Wiggins, S.M. & Hildebrand, J. 2007. High-frequency Acoustic Recording Package (HARP) for broadband, long-term marine mammal monitoring. In: Symposium on Underwater Technology and Workshop on Scientific Use of Submarine Cables and Related Technologies (ed. by Anonymous), pp. 551-557.

Wood S. 2006. Generalized additive models: an introduction with R CRC press.

Würsig, B., Cipriano, F. & Würsig, M. 1991. Dolphin movement patterns: information from radio and theodolite tracking studies. In: Dolphin societies: Discoveries and puzzles (ed. by K. Pryor & K.S. Norris), pp. 79-111. University of California Press.

Reference: Additional Vessel Survey for CWD Monitoring in Deep Bay Area



The additional survey in Deep Bay (DB) was conducted on a voluntary basis at the same frequency of two surveys per month.

All DB data were for reference and used only for density and abundance estimation.

(Note: The transect route in the DB survey area could not be fully travelled due to obstruction by the existing oyster culture rafts.)